



munster
cattle breeding group

Established Experts in Bovine Genetics



Home to 9 of the top 10 most used Beef A.I. Sires in Ireland

BEEF SIRE DIRECTORY 2016/7

Home to 9 of the top 10 most used Beef A.I. Sires

Based on 2015 calf registrations - Source ICBF



GENOMIC INDEX

Most of the bulls presented in this catalogue have a Genomic Index, the first Genomic Indices available for beef bulls in Ireland. This is a world first for across breed genomic evaluations.

Genomics means you can have more confidence in the Stars awarded to a bull and when you use a bull that you are more likely to get what the Stars say! It also means that now we can more accurately identify the bulls that will increase profits on Irish farms.

For young bulls expect to see Replacement Index reliabilities increase from 20% to 40% as result of genomics; equivalent to "on average" 10 progeny records. The table across details the equivalent number of records of a genomic index depending on the trait for a young animal.

Trait	Reliability		Equivalent Progeny Records
	Pre - Genomic	Genomic	
Age 1st Calving	21%	46%	6
Calving Interval	16%	44%	96
Survival	14%	43%	140
Carcass Weight	25%	48%	5
Carcass Fat	22%	46%	5
Carcass Conformation	21%	46%	6
Feed Intake	12%	42%	4
			Source ICBF

Once the ear sample of an animal is taken, the DNA in that sample is examined for genes associated with performance traits such as calving difficulty, fertility, weaning weight, carcass traits amongst others. If the animal is carrying good genes then it receives a higher number of Stars – this is a prediction of performance.

The evidence is clear internationally that, on average, higher genetic merit animals perform better.

This cutting edge technology is an inherent part of the Munster A.I. and Progressive Genetics beef breeding programme (NCBC).

Your BDGP Partner

General A.I. Requirement

All of the bulls presented in the main section of this catalogue (up to and including page 43) qualify for the General A.I. requirement of the BDGP Scheme i.e. they are either 4 or 5 star in either Replacement or Terminal Index within or across breed.

Female Replacement Strategy

There are 96 bulls in this catalogue with a Replacement Index of more than €73 (4 star across breed).

A summary by breed of all the high index Replacement bulls available is on pages 36-41.

For a heifer to be 16 months by 31st October 2020, she must be born prior to 30th June 2019; her dam must be bred prior to 18th September 2018.

SYMBOLS EXPLAINED

For each breed, the superior sires for weanling production, finishing and replacements are clearly labelled. These labels are our stamp of approval.



WEANLING SPECIALIST

The superior sires for weanling production are the sires that will deliver the highest value weanlings. Progeny of these sires have excellent weight and muscle development at the weaning stage. The sires recommended for weanling production in this catalogue rank highly for weaning weight and calf quality, at high reliabilities. They consistently produce numerous champions and top prices at weanling show and sales around the country.



FINISHING SPECIALIST

The superior sires for finishing are the sires which will efficiently produce heavy, high grade, high value carcasses. The sires recommended for finishing in this catalogue rank highly for carcass weight and carcass conformation at high reliabilities.



PEDIGREE

A pedigree royalty fee applies to these sires at the time of registration of pedigree progeny. This is collected by the relevant breed society. No fee applies to commercial calves.



REPLACEMENT

The superior sires for replacements are those which will deliver solid, hard-working cows. Daughters have good milk, fertility, calving ability, temperament, are easily maintained and are functionally correct in order to last the long winters inside. The sires recommended in this catalogue for replacement are well proven.



PROOF PENDING

These are bulls which are awaiting a calving survey

ZAG CASTLEVIEW GAZELLE

DOB: 24/12/2011

HERD BOOK NO.: LIMIRLM191567140634



CALVING EASE
☒ EASY
☐ AVERAGE
☐ MATURE COWS ONLY



LIMOUSIN

Star Rating (within breed)	Economic Indexes	Euro value per progeny	Index reliability	Star Rating (across all beef breeds)
★★★★★	REPLACEMENT	€184	58% (Average)	★★★★★
★★★★★	TERMINAL	€138	75% (High)	★★★★★

Star Rating (within breed)	Key profit traits	Index value	Trait reliability	Star Rating (across all beef breeds)
EXPECTED PROGENY PERFORMANCE				
	Calving difficulty (% 3 & 4)	4.8%	99% (Very High)	
★★★★★	Gestation Length	3.44d	99% (Very High)	★★★★★
★★★★★	Dolality (1-5 scale)	-0.09 scale	96% (Very High)	★★★★★
★★★★★	Carcass weight (kg)	24kg	72% (High)	★★★★★
★★★★★	Carcass conformation (1-15 scale)	2.49 scale	64% (Average)	★★★★★
EXPECTED DAUGHTER BREEDING PERFORMANCE				
	Daughter calving difficulty (% 3 & 4)	5.3%	46% (Average)	
★★★★★	Daughter milk (kg)	3kg	49% (Average)	★★★★★
★★★★★	Daughter calving interval (days)	-3.5 days	43% (Average)	★★★★★

Source: CBF AUGUST '16



ZAG Calf, Gearoid Kenny

GENOMIC INDEX

<p>⊕ Joint No. 1 Limousin bull on Replacement Index</p>	<p>⊕ Easy calving, suitable for maiden heifers. Avoid on heavily muscled heifers</p>	<p>⊕ Progeny are born small with excellent subsequent growth and shape</p>	<p>⊕ Use on tall plainer heifers & cows</p>
---	--	--	---

┌ GLENROCK VENTURA
 └ AMPERTAINE COMMANDER
 ┌ AMPERTAINE ANNABELLA
 └ RONICK HAWK
 ┌ CASTLEVIEW CAMELIA
 └ F040 G7

OKH KELTIC HANDSOME

DOB: 08/09/2012

HERD BOOK NO.: LIMIRLM281673780084



CALVING EASE
☐ EASY
☒ AVERAGE
☐ MATURE COWS ONLY



LIMOUSIN



Star Rating (within breed)	Economic Indexes	Euro value per progeny	Index reliability	Star Rating (across all beef breeds)
★★★★★★	REPLACEMENT	€121	52% (Average)	★★★★★★
★★★★★	TERMINAL	€127	64% (Average)	★★★★★★
Star Rating (within breed)	Key profit traits	Index value	Trait reliability	Star Rating (across all beef breeds)
EXPECTED PROGENY PERFORMANCE				
	Calving difficulty (% 3 & 4)	6.1%	97% (Very High)	
★★★★★★	Gestation Length	2.04d	98% (Very High)	★★★★★
★★★★★★	Docility (1-5 scale)	0.05 scale	88% (Very High)	★★★★★
★★★★★	Carcass weight (kg)	23kg	58% (Average)	★★★★★★
★★★★★	Carcass conformation (1-15 scale)	2.19 scale	49% (Average)	★★★★★★
EXPECTED DAUGHTER BREEDING PERFORMANCE				
	Daughter calving difficulty (% 3 & 4)	6.04%	44% (Average)	
★★★★★★	Daughter milk (kg)	1kg	48% (Average)	★★★☆☆
★★★★★★	Daughter calving interval (days)	-2.3 days	39% (Low)	★★★★★

Source: CBF AUGUST '16



OKH calf, Kevin Moloney, Broadford, Co. Clare



OKH Son, 1 year old, Keltic Kondor

GENOMIC INDEX

- + Great all-round bull, 5 star Replacement & Terminal (across breed)
- + The dam line is excellent on all maternal traits
- + Handsome transmits Growth, Shape, Functionality & excellent Pelvic Structure
- + Short gestation. Excellent temperament

☐ GLENROCK VENTURA
☒ AMPERTAINE COMMANDER
☐ AMPERTAINE ANNABELLA
☐ GREENWELL MAJOR
☒ CWMPEDRAN BEAUTY
☐ CWMPEDRAN PERWINKLE

LM2117 TOMSCHOICE IMPERIAL

DOB: 18/11/2013

HERD BOOK NO.: LIMGBRM124148300281

PROOF
PENDING



- + Imperial's first calves were easily born and shaped up quickly after birth
- + Son of Kaprico Eravelle, a trait leader in the UK for calving ease and gestation length
- + Imperial is a correct, well - muscled and exceptionally quiet bull
- + Shortest gestation Limousin in Irish A.I.

LIMOUSIN

GENOMIC INDEX

Star Rating (within breed)	Economic Indexes	Euro value per progeny	Index reliability	Star Rating (across all beef breeds)
★★★★★	REPLACEMENT	€131	36% (Low)	★★★★★
★★★★★	TERMINAL	€130	40% (Average)	★★★★★
Star Rating (within breed)	Key profit traits	Index value	Trait reliability	Star Rating (across all beef breeds)
EXPECTED PROGENY PERFORMANCE				
	Calving difficulty (% 3 & 4)	2.8%	48% (Average)	
★★★★★	Gestation Length	1.74d	46% (Average)	★★★★★
★★★★★	Docility (1-5 scale)	0 scale	39% (Low)	★★★★★
★★★★★	Carcass weight (kg)	21kg	39% (Low)	★★★★★
★★★★★	Carcass conformation (1-15 scale)	1.83 scale	36% (Low)	★★★★★
EXPECTED DAUGHTER BREEDING PERFORMANCE				
	Daughter calving difficulty (% 3 & 4)	5.7%	34% (Low)	
★★★★★	Daughter milk (kg)	1kg	36% (Low)	★★★★★
★★★★★	Daughter calving interval (days)	0.5 days	33% (Low)	★★★★★

Source: ICBF AUGUST '16



WILODGE TONKA

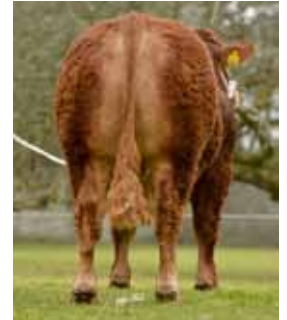
KAPRICO ERAVELLE

KAPRICO RAVELLE

HOMEBYRES DRUMMIE

TOMSCHOICE GAUCHE

TOMSCHOICE VOGUE



OEI IVOIRE PP

DOB: 28/03/2013

HERD BOOK NO.: LIMFRAM008758730975

CALVING EASE
EASY
AVERAGE
MATURE COWS ONLY

HOMO POLLED



- + Stylish homozygous polled bull; all the progeny will be born without horns
- + First progeny were easily born and are well-muscled, correct & stylish
- + Ivoire has two of the best polled Limousin bulls in his pedigree; Clovis & Tigris. They are the only two qualified polled bulls in France
- + Easily fleshed bull

LIMOUSIN

GENOMIC INDEX

Star Rating (within breed)	Economic Indexes	Euro value per progeny	Index reliability	Star Rating (across all beef breeds)
★★★★★	REPLACEMENT	€73	40% (Average)	★★★★★
★★★★★	TERMINAL	€87	51% (Average)	★★★★★
Star Rating (within breed)	Key profit traits	Index value	Trait reliability	Star Rating (across all beef breeds)
EXPECTED PROGENY PERFORMANCE				
	Calving difficulty (% 3 & 4)	5.1%	89% (Very High)	
★★★★★	Gestation Length	2.98d	97% (Very High)	★★★★★
★★★★★	Docility (1-5 scale)	0 scale	44% (Average)	★★★★★
★★★★★	Carcass weight (kg)	10kg	40% (Average)	★★★★★
★★★★★	Carcass conformation (1-15 scale)	1.83 scale	38% (Low)	★★★★★
EXPECTED DAUGHTER BREEDING PERFORMANCE				
	Daughter calving difficulty (% 3 & 4)	4.42%	32% (Low)	
★★★★★	Daughter milk (kg)	0kg	35% (Low)	★★★★★
★★★★★	Daughter calving interval (days)	0.7 days	32% (Low)	★★★★★

Source: ICBF AUGUST '16

TIGRIS HOMO POLLED RR

FANON P

CANON

CLOVIS

FLORALIE

BOUQUET



Ivoire son pictured @ 7 months

Home to 9 of the top 10 most used Beef A.I. Sires in Ireland

LM2116 TOMSCHOICE IRONSTONE

DOB: 28/11/2013

HERD BOOK NO.: LIMGBRM124148500283

PROOF
PENDING



LIMOUSIN



Ironstone newborn Keltic
Leinsterking



Ironstone calf, Darren Cusack, Co. Clare

Star Rating (within breed)	Economic Indexes	Euro value per progeny	Index reliability	Star Rating (across all beef breeds)
★★★★★★	REPLACEMENT	€110	13% (Very Low)	★★★★★★
★★★★★	TERMINAL	€120	22% (Low)	★★★★★

Star Rating (within breed)	Key profit traits	Index value	Trait reliability	Star Rating (across all beef breeds)
EXPECTED PROGENY PERFORMANCE				
	Calving difficulty (% 3 & 4)	3.3%	53% (Average)	
★★★★★★	Gestation Length	2.13d	65% (Average)	★★★★★
★★★★★★	Docility (1-5 scale)	0.04 scale	15% (Very Low)	★★★★★
★★★★★	Carcass weight (kg)	21kg	14% (Very Low)	★★★★★★
★★★☆☆	Carcass conformation (1-15 scale)	1.77 scale	9% (Very Low)	★★★★★★
EXPECTED DAUGHTER BREEDING PERFORMANCE				
	Daughter calving difficulty (% 3 & 4)	5.47%	7% (Very Low)	
★★★★★★	Daughter milk (kg)	4kg	10% (Very Low)	★★★★★
★★★★★	Daughter calving interval (days)	1.4 days	6% (Very Low)	★★★★★

Source: ICBF AUGUST '16

<p>➤ Ironstone's first calves have lived up to expectation; easily born, super quality & stylish</p>	<p>➤ Progeny are correct & long with excellent growth, muscle development and temperament</p>	<p>➤ Sired by Kaprico Eravelle; a trait leader in the UK for gestation length and calving ease from one of the best cow families at Tomschoice</p>	<p>➤ Kaprico Eravelle daughters are very milky</p>
--	---	--	--

WILODGE TONKA
 KAPRICO ERAVELLE
 KAPRICO RAVELLE
 HOMEBYRES DRUMMIE
 TOMSCHOICE GEMSTONE
 TOMSCHOICE DESIRE

LM2214 IDALGO PP

DOB: 02/02/2013

HERD BOOK NO.: LIMFRAM008758730945

PROOF
PENDING

HOMO POLLED



- + No. 2 Limousin bull on Terminal Index standing in Irish A.I.
- + Homozygous polled, all the progeny will be born without horns
- + Progeny in France are wide and powerful
- + Excellent on weight gain



Grand Sire: Tigris PP (RR)

GENOMIC INDEX

Star Rating (within breed)	Economic Indexes	Euro value per progeny	Index reliability	Star Rating (across all beef breeds)
★★★★★	REPLACEMENT	€94	36% (Low)	★★★★★
★★★★★	TERMINAL	€153	43% (Average)	★★★★★
Star Rating (within breed)	Key profit traits	Index value	Trait reliability	Star Rating (across all beef breeds)
EXPECTED PROGENY PERFORMANCE				
	Calving difficulty (% 3 & 4)	5.8%	54% (Average)	
★★★★★	Gestation Length	4.22d	36% (Low)	★★★★★
★★★★★	Docility (1-5 scale)	-0.06 scale	33% (Low)	★★★★★
★★★★★	Carcass weight (kg)	33kg	45% (Average)	★★★★★
★★★★★	Carcass conformation (1-15 scale)	2.26 scale	39% (Low)	★★★★★
EXPECTED DAUGHTER BREEDING PERFORMANCE				
	Daughter calving difficulty (% 3 & 4)	4.58%	32% (Low)	
★★★★★	Daughter milk (kg)	-2kg	36% (Low)	★★★★★
★★★★★	Daughter calving interval (days)	-0.3 days	31% (Low)	★★★★★

Source: ICBF AUGUST '16

TIGRIS HOMO POLLED RR
FANON P
CANON
Clovis
FANFARE
Nellie



ADX ARDLEA DAN

DOB: 10/09/2008

HERD BOOK NO.: LIMIRLM221064580751



CALVING EASE
EASY
AVERAGE
MATURE COWS ONLY



- + The old reliable!
- + Proven terminal bull
- + No. 1 Limousin bull available on Feed Intake, 5 star Carcass Weight, 5 star Carcass Conformation
- + Consistent bull, works on many different types of cow and stamps them everytime.



ADX daughter, Brian Little, Co. Cavan

GENOMIC INDEX

Star Rating (within breed)	Economic Indexes	Euro value per progeny	Index reliability	Star Rating (across all beef breeds)
★★★★★	REPLACEMENT	€49	92% (Very High)	★★★★★
★★★★★	TERMINAL	€126	96% (Very High)	★★★★★
Star Rating (within breed)	Key profit traits	Index value	Trait reliability	Star Rating (across all beef breeds)
EXPECTED PROGENY PERFORMANCE				
	Calving difficulty (% 3 & 4)	7.4%	99% (Very High)	
★★★★★	Gestation Length	4.11d	99% (Very High)	★★★★★
★★★★★	Docility (1-5 scale)	-0.06 scale	99% (Very High)	★★★★★
★★★★★	Carcass weight (kg)	23kg	99% (Very High)	★★★★★
★★★★★	Carcass conformation (1-15 scale)	2.16 scale	99% (Very High)	★★★★★
EXPECTED DAUGHTER BREEDING PERFORMANCE				
	Daughter calving difficulty (% 3 & 4)	4.06%	96% (Very High)	
★★★★★	Daughter milk (kg)	-8kg	97% (Very High)	★★★★★
★★★★★	Daughter calving interval (days)	-3.6 days	81% (High)	★★★★★

Source: ICBF AUGUST '16

OMAR
VIVALDI
NAPHTALINE
NENUPHAR
BREMORE VERYNICE
171 RUCIE B

Home to 9 of the top 10 most used Beef A.I. Sires in Ireland

LIMOUSIN

LIMOUSIN

LM2206 ELITE ICE CREAM ET

DOB: 20/12/2013

HERD BOOK NO.: LIMIRLM221062760982

CALVING EASE
☐ EASY
☐ AVERAGE
☒ MATURE COWS ONLY

PROOF
 PENDING

LIMOUSIN



NCBC
 Ireland
 Genetics

Star Rating (within breed)	Economic Indexes	Euro value per progeny	Index reliability	Star Rating (across all beef breeds)
★★★★★	REPLACEMENT	€74	39% (Very Low)	★★★★★
★★★★★	TERMINAL	€168	45% (Average)	★★★★★

Star Rating (within breed)	Key profit traits	Index value	Trait reliability	Star Rating (across all beef breeds)
EXPECTED PROGENY PERFORMANCE				
	Calving difficulty (% 3 & 4)	6.9%	48% (Average)	
★★★★★	Gestation Length	3.3d	50% (Average)	★★★★★
★★★★★	Dolality (1-5 scale)	-0.02 scale	47% (Average)	★★★★★
★★★★★	Carcass weight (kg)	38kg	48% (Average)	★★★★★
★★★★★	Carcass conformation (1-15 scale)	2.55 scale	42% (Average)	★★★★★
EXPECTED DAUGHTER BREEDING PERFORMANCE				
	Daughter calving difficulty (% 3 & 4)	4.94%	34% (Low)	
★★★★★	Daughter milk (kg)	-4kg	37% (Low)	★★★★★
★★★★★	Daughter calving interval (days)	1.3 days	33% (Low)	★★★★★

Source: ICBF AUGUST '16



Daughter, Roundhill L Unanime 1656

GENOMIC INDEX

- + No. 1 Limousin bull on Terminal Index standing in Irish A.I.
- + First calves are exceptional in quality & temperament
- + Use to improve shape while maintaining size, style and correctness
- + Carrier of the double muscle gene Q204X

GLENROCK VENTURA
 AMPERTAINE ELGIN
 AMPERTAINE CARLA
 EMERSON
 ARDLEA GEORGE
 ARDLEA DELTA

Home to 9 of the top 10 most used Beef A.I. Sires in Ireland

GWO CASTLEVIEW GRINGO ET

DOB: 20/01/2011

HERD BOOK NO.: LIMIRLM191567170587



CALVING EASE
☐ EASY
☒ AVERAGE
☐ MATURE
 COWS ONLY



LIMOUSIN

Star Rating (within breed)	Economic Indexes	Euro value per progeny	Index reliability	Star Rating (across all beef breeds)
★★★★★	REPLACEMENT	€133	72% (High)	★★★★★
★★★★★	TERMINAL	€126	94% (Very High)	★★★★★
Star Rating (within breed)	Key profit traits	Index value	Trait reliability	Star Rating (across all beef breeds)
EXPECTED PROGENY PERFORMANCE				
	Calving difficulty (% 3 & 4)	6.4%	99% (Very High)	
★★★★★	Gestation Length	3.71d	99% (Very High)	★☆☆☆☆
★★★★★	Docility (1-5 scale)	-0.09 scale	99% (Very High)	★☆☆☆☆
★★★★★	Carcass weight (kg)	27kg	98% (Very High)	★★★★★
★★★★★	Carcass conformation (1-15 scale)	2.23 scale	98% (Very High)	★★★★★
EXPECTED DAUGHTER BREEDING PERFORMANCE				
	Daughter calving difficulty (% 3 & 4)	3.27%	63% (Average)	
★★★★★	Daughter milk (kg)	-3kg	59% (Average)	★☆☆☆☆
★★★★★	Daughter calving interval (days)	-2.5 days	52% (Average)	★★★★★

Source: ICBF AUGUST 16



GWO daughter, 400kgs at 10 months of age, sold for €1105. Tommy Kennedy, Co. Sligo



GWO calf, Brendan Keegan, Co. Roscommon

GENOMIC INDEX

+ 5 star bull on Terminal & Replacement Index (across breed) at high reliability	+ Proven superior Terminal bull; high performance, efficient easily-fleshed progeny	+ 5 star on Feed efficiency, Carcass Weight, Conformation & Fat	+ Consistent producer of excellent weanlings and finished cattle from all cow types
---	--	--	--

WILODGE TONKA
 WILODGE VANTASTIC
 RAVENELLE
 FERRY
 CASTLEVIEW REGINA ET
 F040 G7

ZCH CARROWREAGH HONDURAS

DOB: 09/10/2012

HERD BOOK NO.: LIMIRLM311411940351

CALVING EASE
EASY
AVERAGE
MATURE COWS ONLY

MSHOWIT



- + First crop of calves exhibit exceptional size, length, width & power
- + Good Temperament
- + His sire, On Dit, is one of the best maternal bulls ever to come from the French programme
- + Use on mature cows only



ZCH calf, Brian Little, Co. Cavan

GENOMIC INDEX

Star Rating (within breed)	Economic Indexes	Euro value per progeny	Index reliability	Star Rating (across all beef breeds)
★★★★★	REPLACEMENT	€108	54% (Average)	★★★★★
★★★★☆	TERMINAL	€109	64% (Average)	★★★★☆
Star Rating (within breed)	Key profit traits	Index value	Trait reliability	Star Rating (across all beef breeds)
EXPECTED PROGENY PERFORMANCE				
	Calving difficulty (% 3 & 4)	9.1%	95% (Very High)	
★★★★☆	Gestation Length	5.77d	97% (Very High)	★★★★☆
★★★★★	Docility (1-5 scale)	0 scale	87% (Very High)	★★★★☆
★★★★★	Carcass weight (kg)	30kg	59% (Average)	★★★★★
★★★★☆	Carcass conformation (1-15 scale)	1.76 scale	52% (Average)	★★★★★
EXPECTED DAUGHTER BREEDING PERFORMANCE				
	Daughter calving difficulty (% 3 & 4)	3.33%	47% (Average)	
★★★★★	Daughter milk (kg)	3kg	49% (Average)	★★★★☆
★★★★☆	Daughter calving interval (days)	3.4 days	44% (Average)	★★★★☆

Source: ICBF AUGUST '16

INDECIS
ON-DIT
FRANCHON
INCOMPARABLE
125 OSEPHINE
JOSEPHINE

XGL GLORIEUX

DOB: 25/08/2011

HERD BOOK NO.: LIMFRAM002312844901



CALVING EASE
EASY
AVERAGE
MATURE COWS ONLY

MSHOWIT



- + There is great satisfaction with the Glorieux progeny
- + Progeny exhibit excellent power, width, functionality and temperament
- + Glorieux's dam is a very milky cow



XGL daughter Drummin Kylie

GENOMIC INDEX

Star Rating (within breed)	Economic Indexes	Euro value per progeny	Index reliability	Star Rating (across all beef breeds)
★★★★☆	REPLACEMENT	€71	46% (Average)	★★★★☆
★★★★☆	TERMINAL	€122	62% (Average)	★★★★☆
Star Rating (within breed)	Key profit traits	Index value	Trait reliability	Star Rating (across all beef breeds)
EXPECTED PROGENY PERFORMANCE				
	Calving difficulty (% 3 & 4)	7.1%	90% (Very High)	
★★★★★	Gestation Length	2.08d	94% (Very High)	★★★★☆
★★★★☆	Docility (1-5 scale)	-0.1 scale	77% (High)	★★★★☆
★★★★★	Carcass weight (kg)	27kg	60% (Average)	★★★★★
★★★★☆	Carcass conformation (1-15 scale)	2.04 scale	49% (Average)	★★★★★
EXPECTED DAUGHTER BREEDING PERFORMANCE				
	Daughter calving difficulty (% 3 & 4)	4.8%	33% (Low)	
★★★★★	Daughter milk (kg)	2kg	37% (Low)	★★★★☆
★★★★☆	Daughter calving interval (days)	2.4 days	34% (Low)	★★★★☆

Source: ICBF AUGUST '16

ATTRIBUT
CHATON
LAME
OSLO
ULNA
PENAUDE

Home to 9 of the top 10 most used Beef A.I. Sires in Ireland



CHAROLAIS

Star Rating (within breed)	Economic Indexes	Euro value per progeny	Index reliability	Star Rating (across all beef breeds)
★★★★★★	REPLACEMENT	€102	69% (High)	★★★★★★
★★★★★★	TERMINAL	€157	95% (Very High)	★★★★★★

Source: CBF AUGUST '16



FSZ daughter, Albert Bailey, Co. Laois

Star Rating (within breed)	Key profit traits	Index value	Trait reliability	Star Rating (across all beef breeds)
EXPECTED PROGENY PERFORMANCE				
	Calving difficulty (% 3 & 4)	6.9%	99% (Very High)	
★☆☆☆☆	Gestation Length	3.32d	99% (Very High)	★★★★★
★★★★★	Docility (1-5 scale)	0.07 scale	99% (Very High)	★★★★★
★★★★★★	Carcass weight (kg)	38kg	99% (Very High)	★★★★★★
★★★★★★	Carcass conformation (1-15 scale)	2.27 scale	99% (Very High)	★★★★★★



FSZ daughter, 10 months of age, Tommy Kennedy, Co. Sligo

EXPECTED DAUGHTER BREEDING PERFORMANCE				
	Daughter calving difficulty (% 3 & 4)	5.49%	56% (Average)	
★★★★★★	Daughter milk (kg)	3kg	61% (Average)	★★★★★
★★★★★	Daughter calving interval (days)	0.5 days	43% (Average)	★★★★★



FSZ son, Tullyville Miller, Willie Flynn

GENOMIC INDEX

<p>➤ No. 1 Charolais bull available on Terminal Index. €157 @ 99% reliability</p>	<p>➤ Small calves at birth that develop into export quality weanlings; they perform all the way to finish</p>	<p>➤ 5 star within breed on feed efficiency</p>	<p>➤ Not recommended for use on heavily muscled females</p>	<p>➤ A Superstar!! A must for serious weanling producers and finishers</p>
---	---	---	---	--

LAUREL
TINOR
ODETTE
POPULAR
BARONNE
TRISTESSE

LZF CAVELANDS FENIAN

DOB: 20/11/2010

HERD BOOK NO.: CHAIRLM271848690697



CALVING EASE
☒ EASY
☐ AVERAGE
☐ MATURE COWS ONLY

CHAROLAIS



Alfie Shaw



LZF son @ 6 mths of age, Riverside Matthew



LZF son, Pottlereagh Mark, Res Junior male calf champion National Show 2016



LZF daughter, Crockaun Lucy

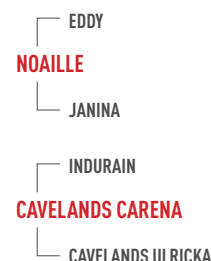
Star Rating (within breed)	Economic Indexes	Euro value per progeny	Index reliability	Star Rating (across all beef breeds)
★★★★★★	REPLACEMENT	€113	68% (High)	★★★★★★
★★★★★	TERMINAL	€124	94% (Very High)	★★★★★

Star Rating (within breed)	Key profit traits	Index value	Trait reliability	Star Rating (across all beef breeds)
EXPECTED PROGENY PERFORMANCE				
	Calving difficulty (% 3 & 4)	6.1%	99% (Very High)	
★☆☆☆☆	Gestation Length	3.41d	99% (Very High)	★☆☆☆☆
★★★★★	Dolcility (1-5 scale)	0.06 scale	99% (Very High)	★★★★★
★★★★★	Carcass weight (kg)	32kg	99% (Very High)	★★★★★★
★★★★★	Carcass conformation (1-15 scale)	1.89 scale	99% (Very High)	★★★★★★
EXPECTED DAUGHTER BREEDING PERFORMANCE				
	Daughter calving difficulty (% 3 & 4)	5.47%	59% (Average)	
★★★★★★	Daughter milk (kg)	-2kg	57% (Average)	★☆☆☆☆
★★★★★★	Daughter calving interval (days)	-4.2 days	46% (Average)	★★★★★★

Source: ICBF AUGUST '16

GENOMIC INDEX

<p>⊕ No. 1 Charolais bull in Irish A.I. on Replacement Index</p>	<p>⊕ Easy calving, suitable for pedigree maidens; 6.1% @ 99% reliability</p>	<p>⊕ Very milky dam line. 5 star (across breed) on all the fertility traits</p>	<p>⊕ No. 1 bull available on Age at First Calving</p>	<p>⊕ Breeds correct, well-balanced, stylish cattle</p>
--	--	---	---	--





Star Rating (within breed)	Economic Indexes	€uro value per progeny	Index reliability	Star Rating (across all beef breeds)
★★★★★	REPLACEMENT	€74	70% (High)	★★★★★
★★★★★	TERMINAL	€138	94% (Very High)	★★★★★
Star Rating (within breed)	Key profit traits	Index value	Trait reliability	Star Rating (across all beef breeds)
EXPECTED PROGENY PERFORMANCE				
	Calving difficulty (% 3 & 4)	6.9%	99% (Very High)	
★★★★★	Gestation Length	2.71d	99% (Very High)	★★★★★
★★★★★	Docility (1-5 scale)	0.13 scale	99% (Very High)	★★★★★
★★★★★	Carcass weight (kg)	33kg	99% (Very High)	★★★★★
★★★★★	Carcass conformation (1-15 scale)	2.29 scale	99% (Very High)	★★★★★
EXPECTED DAUGHTER BREEDING PERFORMANCE				
	Daughter calving difficulty (% 3 & 4)	3.47%	62% (Average)	
★★★★★	Daughter milk (kg)	-3kg	66% (High)	★★★★★
★★★★★	Daughter calving interval (days)	-1.5 days	45% (Average)	★★★★★

Source: CBF AUGUST '16



FWO daughter



FWO weanling Anne Collins Dublin

GENOMIC INDEX

- + All-round bull; Replacement & Terminal
- + 5 star (across breed) on Terminal Index, Carcass Weight & Carcass Conformation
- + Suitable for second calvers; calving difficulty 6.9% @ 99% reliability

IGLOO
 SYLVANER
 JUPE
 PINAY
 BELLE
 ULLA

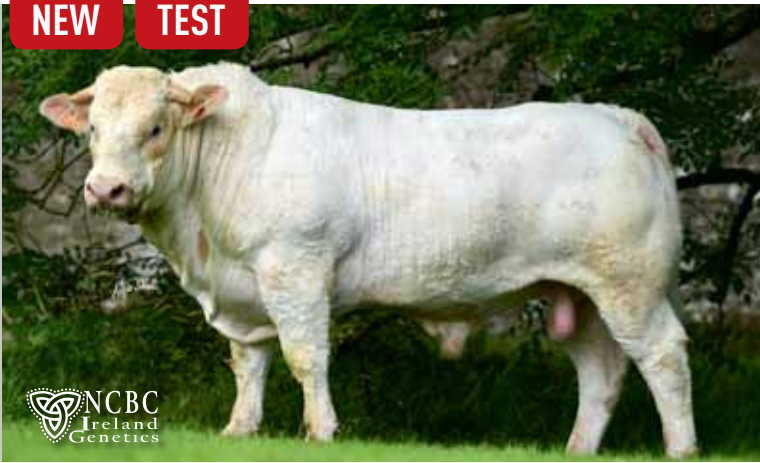
CH2221 JARRET

DOB: 06/12/2013

HERD BOOK NO.: CHAFRAM007122004287

CHAROLAIS

NEW TEST



- + Long, well-muscled, correct bull with a good pelvic area
- + Son of proven easy-calving Maternal sire, Artois
- + Performance tested
- + All round; Replacement & Terminal



Sire, Artois

Source: ICBF AUGUST '16

Ternois
Artois
Pin Up
Ttyrol
Grace
USHUA A

GENOMIC INDEX

Star Rating (within breed)	Economic Indexes	Euro value per progeny	Index reliability	Star Rating (across all beef breeds)
★★★★★	REPLACEMENT	€72	35% (Low)	★★★★★
★★★★★	TERMINAL	€108	38% (Low)	★★★★★
Star Rating (within breed)	Key profit traits	Index value	Trait reliability	Star Rating (across all beef breeds)
EXPECTED PROGENY PERFORMANCE				
	Calving difficulty (% 3 & 4)	4.1%	42% (Average)	
★★★★★	Gestation Length	2.34d	32% (Low)	★★★★★
★★★★★	Docity (1-5 scale)	0.05 scale	31% (Low)	★★★★★
★★★★★	Carcass weight (kg)	22kg	40% (Average)	★★★★★
★★★★★	Carcass conformation (1-15 scale)	1.64 scale	42% (Average)	★★★★★
EXPECTED DAUGHTER BREEDING PERFORMANCE				
	Daughter calving difficulty (% 3 & 4)	4.21%	34% (Low)	
★★★★★	Daughter milk (kg)	0kg	40% (Average)	★★★★★
★★★★★	Daughter calving interval (days)	-0.8 days	31% (Low)	★★★★★

CH4090 JALABERT

DOB: 24/11/2014

HERD BOOK NO.: FR4242263324

CHAROLAIS

NEW TEST



SEMEN AVAILABLE NOVEMBER 2016

- + This is an exceptional new Charolais sire
- + Performance tested in France where he was the best of the group
- + Jalabert is a very good-looking bull with size, length, width, functionality and excellent muscle development
- + Use this bull with confidence, three generations of proven A.I. French bulls in his pedigree

Novotel RQM
Vigny RRE
Pastel RR2E
Artois RRE
Dulcinee RR4S
Rome

IMPORTED BULL
INDEX AVAILABLE ONLINE
NOVEMBER 2016

CH4082 FIRODA JASON

DOB: 12/12/2014

SEMEN AVAILABLE NOVEMBER 2016

HERD BOOK NO.: CHAIRLM211179670649

NEW TEST



- + First Fiston son in Irish A.I.
- + Jason has all the qualities of his sire Fiston; Length Shape & High performance
- + Jason is a big, long, powerful very impressive bull
- + High Performance



CHAROLAIS

GENOMIC INDEX

Star Rating (within breed)	Economic Indexes	Euro value per progeny	Index reliability	Star Rating (across all beef breeds)
★★★★★	REPLACEMENT	€106	43% (Average)	★★★★★
★★★★★	TERMINAL	€148	49% (Average)	★★★★★
Star Rating (within breed)	Key profit traits	Index value	Trait reliability	Star Rating (across all beef breeds)
EXPECTED PROGENY PERFORMANCE				
	Calving difficulty (% 3 & 4)	7.80%	50% (Average)	
★☆☆☆☆	Gestation Length	-8 d	46% (average)	★☆☆☆☆
★★★★★	Docility (1-5 scale)	0.08 scale	57% (Average)	★★★★★
★★★★★	Carcass weight (kg)	40kg	52% (Average)	★★★★★
★★★★★	Carcass conformation (1-15 scale)	2.07 scale	48% (Average)	★★★★★
EXPECTED DAUGHTER BREEDING PERFORMANCE				
	Daughter calving difficulty (% 3 & 4)	4.94%	40% (Average)	
★★★★★	Daughter milk (kg)	2.50kg	42% (Average)	★★★★★
★★★★★	Daughter calving interval (days)	-2.20 days	37% (Low)	★★★★★

Source: ICBF AUGUST '16

Tinor
Fiston
Baronne
Meillard
Firoda Geraldine
Camross Belinda

HHJ HERACLES

DOB: 05/11/2012

HERD BOOK NO.: CHAFRAM008906913045

CALVING EASE
EASY
AVERAGE
MATURE COWS ONLY



- + Heracles has hit the ground running with a great crop of first calves
- + Progeny are high performance, long and functional
- + Use to improve size, length, width and weight gain
- + Mature cows only



HHJ son, Hubert Nicholson, Slane, Co Meath

Source: ICBF AUGUST '16

NOVOTEL
VITTOZ
EPOPEE
ARTOIS
DEFUSEE
TAGLIATEL

GENOMIC INDEX

Star Rating (within breed)	Economic Indexes	Euro value per progeny	Index reliability	Star Rating (across all beef breeds)
★★★★★	REPLACEMENT	€57	39% (Low)	★★★★★
★★★★★	TERMINAL	€80	48% (Average)	★★★★★
Star Rating (within breed)	Key profit traits	Index value	Trait reliability	Star Rating (across all beef breeds)
EXPECTED PROGENY PERFORMANCE				
	Calving difficulty (% 3 & 4)	11.9%	67% (High)	
★☆☆☆☆	Gestation Length	3.57d	81% (High)	★☆☆☆☆
★★★★★	Docility (1-5 scale)	0.01 scale	45% (Average)	★★★★★
★★★★★	Carcass weight (kg)	32kg	44% (Average)	★★★★★
★★★★★	Carcass conformation (1-15 scale)	1.35 scale	43% (Average)	★★★★★
EXPECTED DAUGHTER BREEDING PERFORMANCE				
	Daughter calving difficulty (% 3 & 4)	4.27%	34% (Low)	
★★★★★	Daughter milk (kg)	4kg	40% (Average)	★★★★★
★★★★★	Daughter calving interval (days)	-2.1 days	32% (Low)	★★★★★

Home to 9 of the top 10 most used Beef A.I. Sires in Ireland

CHAROLAIS

GRF GERARD

DOB: 22/11/2010

HERD BOOK NO.: CHAFRAM007121921122



CHAROLAIS



- + Proven Terminal bull, Terminal Index €132 @ 90% reliability
- + 5 star (across breed) on Terminal Index, Carcass Weight, Carcass Conformation
- + Top 1% of the Charolais breed on Carcass Conformation
- + Use to improve Size & Length, BLUP 111 on skeletal development

GENOMIC INDEX

Star Rating (within breed)	Economic Indexes	Euro value per progeny	Index reliability	Star Rating (across all beef breeds)
★★★★★	REPLACEMENT	€39	59% (Average)	★★★★★
★★★★★	TERMINAL	€132	90% (Very High)	★★★★★
Star Rating (within breed)	Key profit traits	Index value	Trait reliability	Star Rating (across all beef breeds)
EXPECTED PROGENY PERFORMANCE				
	Calving difficulty (% 3 & 4)	8.9%	96% (Very High)	
★★★★★	Gestation Length	4.08d	95% (Very High)	★★★★★
★★★★★	Docility (1-5 scale)	0.07 scale	94% (Very High)	★★★★★
★★★★★	Carcass weight (kg)	36kg	94% (Very High)	★★★★★
★★★★★	Carcass conformation (1-15 scale)	2.31 scale	93% (Very High)	★★★★★
EXPECTED DAUGHTER BREEDING PERFORMANCE				
	Daughter calving difficulty (% 3 & 4)	3.67%	39% (Low)	
★★★★★	Daughter milk (kg)	-4kg	46% (Average)	★★★★★
★★★★★	Daughter calving interval (days)	1.7 days	41% (Average)	★★★★★

Source: ICBF AUGUST '16



Gerard weanling from CH X AA cow

Ohio
Unibloc
Rosalie
Repair
Clara
Rosine

CH2220 JONGLEUR

DOB: 09/02/2014

HERD BOOK NO.: CHAFRAM007122264215

CHAROLAIS



- + Very correct, classy bull with excellent breed characteristics
- + New bloodline
- + Performance tested French bull
- + Dam is an excellent quality milky cow

GENOMIC INDEX

Star Rating (within breed)	Economic Indexes	Euro value per progeny	Index reliability	Star Rating (across all beef breeds)
★★★★★	REPLACEMENT	€44	33% (Low)	★★★★★
★★★★★	TERMINAL	€101	35% (Low)	★★★★★
Star Rating (within breed)	Key profit traits	Index value	Trait reliability	Star Rating (across all beef breeds)
EXPECTED PROGENY PERFORMANCE				
	Calving difficulty (% 3 & 4)	5.8%	37% (Low)	
★★★★★	Gestation Length	2.17d	31% (Low)	★★★★★
★★★★★	Docility (1-5 scale)	0.01 scale	30% (Low)	★★★★★
★★★★★	Carcass weight (kg)	26kg	37% (Low)	★★★★★
★★★★★	Carcass conformation (1-15 scale)	1.23 scale	38% (Low)	★★★★★
EXPECTED DAUGHTER BREEDING PERFORMANCE				
	Daughter calving difficulty (% 3 & 4)	4.94%	30% (Low)	
★★★★★	Daughter milk (kg)	-3kg	36% (Low)	★★★★★
★★★★★	Daughter calving interval (days)	-1.9 days	30% (Low)	★★★★★

Source: ICBF AUGUST '16

Desire
Facile
Utile
Tonus
Brigade
Pervenche

Home to 9 of the top 10 most used Beef A.I. Sires in Ireland

GEZ GEDEON

DOB: 19/10/2011

HERD BOOK NO.: CHAFRAM005455126770

CALVING EASE
EASY
AVERAGE
MATURE COWS ONLY



- + Average calving
- + 5 star across breed on Carcass Weight, Conformation and Milk
- + Outcross pedigree

CHAROLAIS



Source: ICBF AUGUST '16

GENOMIC INDEX

Star Rating (within breed)	Economic Indexes	Euro value per progeny	Index reliability	Star Rating (across all beef breeds)
★★★★★	REPLACEMENT	€77	51% (Average)	★★★★★
★★★★★	TERMINAL	€105	73% (High)	★★★★★
Star Rating (within breed)	Key profit traits	Index value	Trait reliability	Star Rating (across all beef breeds)
EXPECTED PROGENY PERFORMANCE				
	Calving difficulty (% 3 & 4)	8.7%	93% (Very High)	
★★★★★	Gestation Length	3.53d	93% (Very High)	★★★★★
★★★★★	Docility (1-5 scale)	-0.01 scale	89% (Very High)	★★★★★
★★★★★	Carcass weight (kg)	32kg	75% (High)	★★★★★
★★★★★	Carcass conformation (1-15 scale)	1.86 scale	69% (High)	★★★★★
EXPECTED DAUGHTER BREEDING PERFORMANCE				
	Daughter calving difficulty (% 3 & 4)	4.31%	33% (Low)	
★★★★★	Daughter milk (kg)	6kg	39% (Low)	★★★★★
★★★★★	Daughter calving interval (days)	0.4 days	37% (Low)	★★★★★

TOULON
DANY
SUZETTE
VALDEVIE
CLEMENTINE
URSULINE

GPD GUEPARD

DOB: 24/01/2011

HERD BOOK NO.: CHAFRAM007121831777



CALVING EASE
EASY
AVERAGE
MATURE COWS ONLY



- + Guepard progeny impress with their width, excellent muscle development on the back and hindquarter, square plates and solid legs.
- + Use on plain cows; he will do it all
- + Mature cows only

CHAROLAIS

GPD, pictured at 2 years



GPD daughter, 1st prize winner National CH show 2016, Helena Fitzgerald

Source: ICBF AUGUST '16

GENOMIC INDEX

Star Rating (within breed)	Economic Indexes	Euro value per progeny	Index reliability	Star Rating (across all beef breeds)
★★★★★	REPLACEMENT	€48	63% (Average)	★★★★★
★★★★★	TERMINAL	€99	91% (Very High)	★★★★★
Star Rating (within breed)	Key profit traits	Index value	Trait reliability	Star Rating (across all beef breeds)
EXPECTED PROGENY PERFORMANCE				
	Calving difficulty (% 3 & 4)	13%	98% (Very High)	
★★★★★	Gestation Length	4.04d	97% (Very High)	★★★★★
★★★★★	Docility (1-5 scale)	0.11 scale	97% (Very High)	★★★★★
★★★★★	Carcass weight (kg)	31kg	96% (Very High)	★★★★★
★★★★★	Carcass conformation (1-15 scale)	2.11 scale	95% (Very High)	★★★★★
EXPECTED DAUGHTER BREEDING PERFORMANCE				
	Daughter calving difficulty (% 3 & 4)	3.49%	47% (Average)	
★★★★★	Daughter milk (kg)	0kg	46% (Average)	★★★★★
★★★★★	Daughter calving interval (days)	0 days	45% (Average)	★★★★★

PORTO
TEXAN-GIE
MARQUISE
IBOB
SLOVENIE
EPOPEE

Home to 9 of the top 10 most used Beef A.I. Sires in Ireland

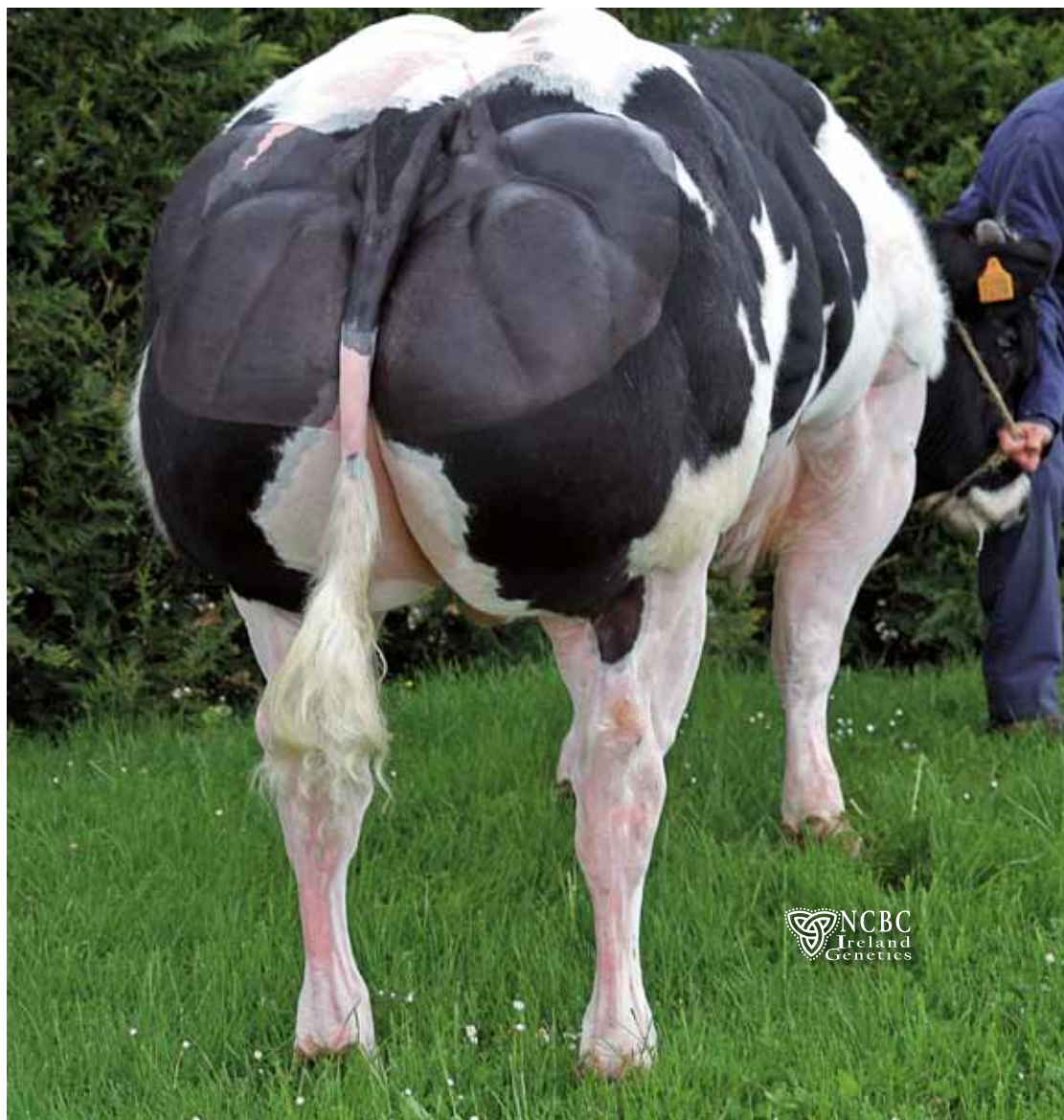
FSN FOLON DE CRAS AVERNAS

DOB: 03/10/2010

HERD BOOK NO.: BBLBELM000826472628



BELGIAN BLUE



- + One of the top bulls available across all breeds on Terminal Index
- + Super quality weanlings – Weight & Shape
- + Works best on plain cows

Star Rating (within breed)	Economic Indexes	Euro value per progeny	Index reliability	Star Rating (across all beef breeds)
★★★★★	REPLACEMENT	€80	45% (Average)	★★★★★
★★★★★	TERMINAL	€162	65% (High)	★★★★★

Star Rating (within breed)	Key profit traits	Index value	Trait reliability	Star Rating (across all beef breeds)
EXPECTED PROGENY PERFORMANCE				
	Calving difficulty (% 3 & 4)	10.1%	78% (High)	
★★★★★	Gestation Length	-0.1d	70% (High)	★★★★★
★★★★★	Docility (1-5 scale)	0.24 scale	72% (High)	★★★★★
★★★★★	Carcass weight (kg)	31kg	69% (High)	★★★★★
★★★★★	Carcass conformation (1-15 scale)	2.92 scale	62% (Average)	★★★★★
EXPECTED DAUGHTER BREEDING PERFORMANCE				
	Daughter calving difficulty (% 3 & 4)	8.77%	33% (Low)	
★★★★★	Daughter milk (kg)	5kg	32% (Low)	★★★★★
★☆☆☆☆	Daughter calving interval (days)	6.7 days	37% (Low)	★☆☆☆☆

Source: ICBF AUGUST '16

GENOMIC INDEX

MONT BLANC DE CENTFONTAINE
 PANACHE DE CENTFONTAINE
 MONDAINE ET DE CENTFONTAINE
 TROPIQUE DE CRAS AVERNAS
 CASQUETTE DE CRAS AVERNAS
 ARCHIE ET DE CRAS AVERNAS

AJY ADAJIO DE BRAY

DOB: 10/11/2007



HERD BOOK NO.: BBLBELM000255530744



- + A legend!
- + An outstanding producer of top quality commercial weanlings, show calves and pedigree cattle.
- + Sire of many champions and top priced weanlings at shows and sales



Adajio daughter, McGowan Bros, Co. Leitrim

SEMEN LIMITED

IMPLANT 8315 BEAUFAUX

EMPIRE D'OCHAIN

BALISE D OCHAIN

EMIGRE DE ST FONTAINE

HUMAINE ET DE BRAY

BRETONNE DE BRAY

Source: ICBF AUGUST '16

GENOMIC INDEX

Star Rating (within breed)	Economic Indexes	Euro value per progeny	Index reliability	Star Rating (across all beef breeds)
★★★★★	REPLACEMENT	€30	73% (High)	★☆☆☆☆
★★★★★	TERMINAL	€134	93% (Very High)	★★★★★
Star Rating (within breed)	Key profit traits	Index value	Trait reliability	Star Rating (across all beef breeds)
EXPECTED PROGENY PERFORMANCE				
	Calving difficulty (% 3 & 4)	11.9%	99% (Very High)	
★★★★★	Gestation Length	1.36d	99% (Very High)	★★★★★
★★★★★	Docility (1-5 scale)	0.22 scale	99% (Very High)	★★★★★
★★★★★	Carcass weight (kg)	31kg	99% (Very High)	★★★★★
★★★★★	Carcass conformation (1-15 scale)	3.03 scale	98% (Very High)	★★★★★
EXPECTED DAUGHTER BREEDING PERFORMANCE				
	Daughter calving difficulty (% 3 & 4)	16.09%	62% (Average)	
★★★★★	Daughter milk (kg)	2kg	67% (High)	★★★★★
★★★★★	Daughter calving interval (days)	3 days	52% (Average)	★★★★★

RWS ROSEMOUNT CASH ET

DOB: 08/09/2008



HERD BOOK NO.: BBLRLM371366290240



- + Proven terminal sire suitable for weanling production and finishing
- + Works best on $\frac{3}{4}$ LM, BA and PT COWS



RWS son Rosemount Ice @ 21 months

Source: ICBF AUGUST '16

GENOMIC INDEX

Star Rating (within breed)	Economic Indexes	Euro value per progeny	Index reliability	Star Rating (across all beef breeds)
★★★★★	REPLACEMENT	€56	81% (High)	★★★☆☆
★★★★★	TERMINAL	€126	93% (Very High)	★★★★★
Star Rating (within breed)	Key profit traits	Index value	Trait reliability	Star Rating (across all beef breeds)
EXPECTED PROGENY PERFORMANCE				
	Calving difficulty (% 3 & 4)	12%	99% (Very High)	
★★★★★	Gestation Length	0.26d	99% (Very High)	★★★★★
★★★★★	Docility (1-5 scale)	0.25 scale	98% (Very High)	★★★★★
★★★★★	Carcass weight (kg)	27kg	99% (Very High)	★★★★★
★★★★★	Carcass conformation (1-15 scale)	2.87 scale	99% (Very High)	★★★★★
EXPECTED DAUGHTER BREEDING PERFORMANCE				
	Daughter calving difficulty (% 3 & 4)	13.2%	74% (High)	
★★★★★	Daughter milk (kg)	3kg	84% (High)	★★★★★
★★★★★	Daughter calving interval (days)	3.5 days	61% (Average)	★★★★★

TORRERO DU GRAND COURT

JOKER DU PONT D'HERBAIS

HARMONIEUSE DU PONT D'HERBAIS

TINTIN DE MY

ROSEMOUNT TESS

ROSEMOUNT PETRA

Home to 9 of the top 10 most used Beef A.I. Sires in Ireland

BELGIAN BLUE

BELGIAN BLUE

ZSD SERPENTIN D'AU CHENE

DOB: 11/02/2010

HERD BOOK NO.: BBLBELM000826428533



WEANLING



FINISHING

CALVING EASE

■ EASY
■ AVERAGE
■ MATURE COWS ONLY

BELGIAN BLUE



Serpentin son, Supreme Champion weanling Kanturk, MI Fleming Cullen Co Cork

Star Rating (within breed)	Economic Indexes	Euro value per progeny	Index reliability	Star Rating (across all beef breeds)
★★★★★	REPLACEMENT	€35	56% (Average)	★☆☆☆☆
★★★★★	TERMINAL	€140	82% (High)	★★★★★

Star Rating (within breed)	Key profit traits	Index value	Trait reliability	Star Rating (across all beef breeds)
EXPECTED PROGENY PERFORMANCE				
	Calving difficulty (% 3 & 4)	12.7%	96% (Very High)	
★★★★★	Gestation Length	1.08d	97% (Very High)	★★★★★
★★★★★	Docity (1-5 scale)	0.31 scale	96% (Very High)	★★★★★
★★★★★	Carcass weight (kg)	29kg	87% (Very High)	★★★★★
★★★★★	Carcass conformation (1-15 scale)	3.11 scale	82% (High)	★★★★★
EXPECTED DAUGHTER BREEDING PERFORMANCE				
	Daughter calving difficulty (% 3 & 4)	11.96%	40% (Average)	
★★★★★	Daughter milk (kg)	3kg	39% (Low)	★★★★★
★★★★★	Daughter calving interval (days)	4.2 days	41% (Average)	★★★★★

Source: ICBF AUGUST '16



Serpentin weanling, Anne Collins, Co. Dublin



Serpentin weanling, Gerry Devitt, Knocknagree, Mallow, Co. Cork

GENOMIC INDEX

- + One of the highest bulls available of any breed on Carcass Conformation
- + Spectacular weanlings! Sire of numerous weanling show & sale champions
- + Super quality, power, width, exceptional muscle development and style

GERMINAL DE FOOT
CANADIAN CLUB KERKENHOFSTEDE
ZOETJEN VD KERKENHOFSTED
LASSO VAN 'T' KOOKSHOF
MONTRICE ET D'AU CHENE
HISTOIRE D'AU CHENE

VSM VENEUR DE SOMME

DOB: 16/01/2010

HERD BOOK NO.: BBLBELM000592405696



- + A complete package of calving-ease, weight & shape
- + Excellent weanlings that perform all the way through to finish
- + Excellent legs & feet
- + Use on $\frac{3}{4}$ LM, BA and PT cows

GENOMIC INDEX

Star Rating (within breed)	Economic Indexes	Euro value per progeny	Index reliability	Star Rating (across all beef breeds)
★★★★★	REPLACEMENT	€45	58% (Average)	★★★★★
★★★★★	TERMINAL	€112	88% (Very High)	★★★★★
Star Rating (within breed)	Key profit traits	Index value	Trait reliability	Star Rating (across all beef breeds)
EXPECTED PROGENY PERFORMANCE				
	Calving difficulty (% 3 & 4)	10.6%	96% (Very High)	
★★★★★	Gestation Length	-0.92d	99% (Very High)	★★★★★
★★★★★	Docility (1-5 scale)	0.05 scale	69% (High)	★★★★★
★★★★★	Carcass weight (kg)	20kg	97% (Very High)	★★★★★
★★★★★	Carcass conformation (1-15 scale)	2.52 scale	96% (Very High)	★★★★★
EXPECTED DAUGHTER BREEDING PERFORMANCE				
	Daughter calving difficulty (% 3 & 4)	10.03%	42% (Average)	
★★★★★	Daughter milk (kg)	3kg	41% (Average)	★★★★★
★★★★★	Daughter calving interval (days)	5.1 days	41% (Average)	★★★★★

Source: ICBF AUGUST '16

VIGOREUX ET DE ST FONTAINE
FRINGANT ET DE BIOURGE
BAKARA DE BIOURGE
RADAR-ET VAN TERBECK
ETINCELLE 4066 DU MOLINIA
CERISE 6910 DU MOLINIA

DBZ MANITOU DE BELLE EAU

DOB: 12/03/2009



- + A confirmed superstar!
- + Superior performer when used on all cow types; dairy, suckler & pedigree
- + Calving ease, short gestation, growth, shape and 5 star on feed efficiency!

GENOMIC INDEX

Star Rating (within breed)	Economic Indexes	Euro value per progeny	Index reliability	Star Rating (across all beef breeds)
★★★★★	REPLACEMENT	€61	80% (High)	★★★★★
★★★★★	TERMINAL	€146	92% (Very High)	★★★★★
Star Rating (within breed)	Key profit traits	Index value	Trait reliability	Star Rating (across all beef breeds)
EXPECTED PROGENY PERFORMANCE				
	Calving difficulty (% 3 & 4)	8.8%	99% (Very High)	
★★★★★	Gestation Length	0.06d	99% (Very High)	★★★★★
★★★★★	Docility (1-5 scale)	0.2 scale	99% (Very High)	★★★★★
★★★★★	Carcass weight (kg)	24kg	99% (Very High)	★★★★★
★★★★★	Carcass conformation (1-15 scale)	2.79 scale	99% (Very High)	★★★★★
EXPECTED DAUGHTER BREEDING PERFORMANCE				
	Daughter calving difficulty (% 3 & 4)	17.95%	82% (High)	
★★★★★	Daughter milk (kg)	5kg	85% (Very High)	★★★★★
★★★★★	Daughter calving interval (days)	4.5 days	56% (Average)	★★★★★

Source: ICBF AUGUST '16



Colin Bourke, Rosegreen, Cashel, Co. Tipperary

DAFYDD D'OCHAIN
IMPAIR DE COBREVILLE
GIFAFLE DE COBREVILLE
HARI ET 1602 DE BEAURAING
INEGALEE DE BELLE EAU
GAFFEUSE DE BELLE EAU

Home to 9 of the top 10 most used Beef A.I. Sires in Ireland

BELGIAN BLUE

BELGIAN BLUE

DEP DESPOTE DE L'EAU D'EPPE

DOB: 02/01/2000

HERD BOOK NO.: BBLGBRM000120040243



BELGIAN BLUE



- + Proven Terminal Sire
- + Consistent producer of top quality weanlings
- + Use on plain cows – he will do it all
- + Use on mature cows only
- + Not for pedigree breeding



DEP calf from a 5 star LM X cow, Brian Finneran, Co. Sligo

Source: ICBF AUGUST '16

GENOMIC INDEX

Star Rating (within breed)	Economic Indexes	Euro value per progeny	Index reliability	Star Rating (across all beef breeds)
★★★★★	REPLACEMENT	-€17	94% (Very High)	★★★★★
★★★★★	TERMINAL	€122	92% (Very High)	★★★★★
Star Rating (within breed)	Key profit traits	Index value	Trait reliability	Star Rating (across all beef breeds)
EXPECTED PROGENY PERFORMANCE				
	Calving difficulty (% 3 & 4)	16.7%	99% (Very High)	
★★★★★	Gestation Length	-0.87d	99% (Very High)	★★★★★
★★★★★	Docility (1-5 scale)	0.28 scale	99% (Very High)	★★★★★
★★★★★	Carcass weight (kg)	31kg	99% (Very High)	★★★★★
★★★★★	Carcass conformation (1-15 scale)	2.92 scale	99% (Very High)	★★★★★
EXPECTED DAUGHTER BREEDING PERFORMANCE				
	Daughter calving difficulty (% 3 & 4)	11.85%	95% (Very High)	
★★★★★	Daughter milk (kg)	0kg	98% (Very High)	★★★★★
★★★★★	Daughter calving interval (days)	6.7 days	90% (Very High)	★★★★★

FAUSTO ET DE FONTENA
CUBITUS DU PRE ROSINE
SALLY DU PRE ROSINE
BANCO DU PIED DE VEAU
HIRONDELLE
DE LA PETITE FERRIERE EVITA

ZGH HURRICANE GONZO

DOB: 28/05/2011

HERD BOOK NO.: PARIRLM271913420067



PARTHENAISE



- + Gonzo is an exceptional Terminal sire stamping his progeny everytime
- + Excellent Weight gain, excellent Shape, Good Feed efficiency
- + Super temperament
- + Use to produce export quality weanlings



ZGH Calf @ 6 weeks old, Eamon Cassells, Co. Meath

Source: ICBF AUGUST '16

GENOMIC INDEX

Star Rating (within breed)	Economic Indexes	Euro value per progeny	Index reliability	Star Rating (across all beef breeds)
★★★★★	REPLACEMENT	€89	50% (Average)	★★★★★
★★★★★	TERMINAL	€123	73% (High)	★★★★★
Star Rating (within breed)	Key profit traits	Index value	Trait reliability	Star Rating (across all beef breeds)
EXPECTED PROGENY PERFORMANCE				
	Calving difficulty (% 3 & 4)	8%	92% (Very High)	
★★★★★	Gestation Length	5.55d	94% (Very High)	★★★★★
★★★★★	Docility (1-5 scale)	0.06 scale	90% (Very High)	★★★★★
★★★★★	Carcass weight (kg)	30kg	74% (High)	★★★★★
★★★★★	Carcass conformation (1-15 scale)	2.06 scale	66% (High)	★★★★★
EXPECTED DAUGHTER BREEDING PERFORMANCE				
	Daughter calving difficulty (% 3 & 4)	8.29%	34% (Low)	
★★★★★	Daughter milk (kg)	3kg	35% (Low)	★★★★★
★★★★★	Daughter calving interval (days)	-0.5 days	37% (Low)	★★★★★

SCAR
DERE NOEL
SCARLET
SOCRATE
VAILLANTE
RENONCULE

Home to 9 of the top 10 most used Beef A.I. Sires in Ireland

SI2152 CURAHEEN EARP

DOB: 28/12/2013

HERD BOOK NO.: SIMIRLM171059810478

PROOF
PENDING

SIMMENTAL



Star Rating (within breed)	Economic Indexes	Euro value per progeny	Index reliability	Star Rating (across all beef breeds)
★★★★★	REPLACEMENT	€164	48% (Average)	★★★★★
★★★★★	TERMINAL	€113	51% (Average)	★★★★★
Star Rating (within breed)	Key profit traits	Index value	Trait reliability	Star Rating (across all beef breeds)
EXPECTED PROGENY PERFORMANCE				
	Calving difficulty (% 3 & 4)	4.1%	55% (Average)	
★★★★★	Gestation Length	1.56d	61% (Average)	★★★★★
★★★★★	Docity (1-5 scale)	0.06 scale	57% (Average)	★★★★★
★★★★★	Carcass weight (kg)	29kg	53% (Average)	★★★★★
★★★★★	Carcass conformation (1-15 scale)	1.65 scale	49% (Average)	★★★★★
EXPECTED DAUGHTER BREEDING PERFORMANCE				
	Daughter calving difficulty (% 3 & 4)	4.44%	45% (Average)	
★★★★★	Daughter milk (kg)	13kg	50% (Average)	★★★★★
★★★★★	Daughter calving interval (days)	-0.5 days	41% (Average)	★★★★★

Source: CBF AUGUST '16



Dam, Blackford Siskin



Curaheen Earp calf from a PT CBQ dam,
Mary Russell, Thurles, Co. Tipperary

GENOMIC INDEX

+	Earp's first calves were easily born, are nice quality and well coloured	+	Earp was selected for the Gene Ireland Maternal Programme	+	Complete bull, strong in both Terminal & Maternal traits	+	His dam is an impressive cow with a great pelvis and excellent on milk production
---	--	---	---	---	--	---	---

HILLCREST CHAMPION
CURAHEEN VIO (ET)
RACEVIEW MERLE-BEAUTY
KILBRIDE FARM MILLAR
BLACKFORD SISKIN
BLACKFORD MAVIS

SI2469 LISNACRANN FIFTY CENT

DOB: 25/10/2014

HERD BOOK NO.: SIMIRLM272111730322

PROOF
PENDING

SIMMENTAL



PEDIGREE
ROYALTY



Star Rating (within breed)	Economic Indexes	Euro value per progeny	Index reliability	Star Rating (across all beef breeds)
★★★★★	REPLACEMENT	€156	50% (Average)	★★★★★
★★★★★	TERMINAL	€111	51% (Average)	★★★★★

Star Rating (within breed)	Key profit traits	Index value	Trait reliability	Star Rating (across all beef breeds)
EXPECTED PROGENY PERFORMANCE				
	Calving difficulty (% 3 & 4)	3.5%	52% (Average)	
★★★★★	Gestation Length	1.46d	60% (Average)	★★★★★
★★★★★	Docility (1-5 scale)	0.08 scale	57% (Average)	★★★★★
★★★★★	Carcass weight (kg)	25kg	54% (Average)	★★★★★
★★★★★	Carcass conformation (1-15 scale)	1.64 scale	50% (Average)	★★★★★
EXPECTED DAUGHTER BREEDING PERFORMANCE				
	Daughter calving difficulty (% 3 & 4)	5.63%	47% (Average)	
★★★★★	Daughter milk (kg)	12kg	50% (Average)	★★★★★
★☆☆☆☆	Daughter calving interval (days)	1.4 days	46% (Average)	★☆☆☆☆

Source: CBF AUGUST '16

GENOMIC INDEX

+	5 star across breed on Replacement Index, Gestation, Carcass Weight, Conformation & Milk!!	+	Correct bull with a great top and pelvic area	+	Excellent pedigree for maternal traits	+	Easy calving bloodline
---	--	---	---	---	--	---	------------------------

— HADRIAN
 — HURTIG
 — GELSE
 — MONADUFF JEWEL
 — LISNACRAN PERFECT START
 — HILLCREST LIMELIGHT

SI4083 CLONAGH FROSTY KING

DOB: 18/12/2014

HERD BOOK NO.: SIMIRLM221283391170

NEW

TEST



SIMMENTAL



PEDIGREE
ROYALTY



Star Rating (within breed)	Economic Indexes	Euro value per progeny	Index reliability	Star Rating (across all beef breeds)
★★★★★	REPLACEMENT	€150	47% (Average)	★★★★★
★★★★★	TERMINAL	€121	49% (Average)	★★★★★
Star Rating (within breed)	Key profit traits	Index value	Trait reliability	Star Rating (across all beef breeds)
EXPECTED PROGENY PERFORMANCE				
	Calving difficulty (% 3 & 4)	4.8%	48% (Average)	
★★★★★	Gestation Length	2.19d	48% (Average)	★★★★★
★★★★★	Docility (1-5 scale)	0.2 scale	57% (Average)	★★★★★
★★★★★	Carcass weight (kg)	35kg	54% (Average)	★★★★★
★★★★★	Carcass conformation (1-15 scale)	1.55 scale	49% (Average)	★★★★★
EXPECTED DAUGHTER BREEDING PERFORMANCE				
	Daughter calving difficulty (% 3 & 4)	5.61%	45% (Average)	
★★★★★	Daughter milk (kg)	9.9 kg	49% (Average)	★★★★★
★★★★★	Daughter calving interval (days)	0 days	40% (Average)	★★★★★

Source: CBF AUGUST '16



Sire, Banwy T Rex



Dam, Cloneygowan Temptress Posh

GENOMIC INDEX

+	Great combination of Maternal & Terminal Traits	+	+9.9kgs daughter Milk!!	+	Sired by the renowned Banwy T Rex; proven easy-calving maternal sire excelling in milk, performance, docility & calving ease. 3 times Simmental of the year	+	Dam's full brother, Clonagh World Class, was the UK bull of the year in 2012	+	Use to improve size, length, width, pelvic area functionality and milk
---	---	---	-------------------------	---	---	---	--	---	--

STERLING NELSON 2ND
BANWY T-REX
 SKERRINGTON HYACINTH 8TH
 KILBRIDE FARM NEWRY
CLONEYGOWAN TEMPTRESS POSH
 CLONAGH POSH-KLOWNA

KEZ KEELDRUM CAPONE 11

DOB: 25/05/2011

HERD BOOK NO.: SIMGBRM560920600837

CALVING EASE
EASY
AVERAGE
MATURE COWS ONLY

SIMMENTAL



- + Great satisfaction with KEZ progeny
- + KEZ daughters are exceptionally quiet, correct with excellent pelvic structure
- + +7 kgs on Milk



KEZ in-calf heifer, calving at 2 years of age.
Sean Moloney, Flagmount, Co. Clare.

Source: ICBF AUGUST '16

GENOMIC INDEX

Star Rating (within breed)	Economic Indexes	Euro value per progeny	Index reliability	Star Rating (across all beef breeds)
★★★★★	REPLACEMENT	€98	58% (Average)	★★★★★
★★★★★	TERMINAL	€67	87% (Very High)	★★★★★
Star Rating (within breed)	Key profit traits	Index value	Trait reliability	Star Rating (across all beef breeds)
EXPECTED PROGENY PERFORMANCE				
	Calving difficulty (% 3 & 4)	6.4%	98% (Very High)	
★★★★★	Gestation Length	3.35d	98% (Very High)	★★★★★
★★★★★	Docity (1-5 scale)	0.1 scale	97% (Very High)	★★★★★
★★★★★	Carcass weight (kg)	20kg	93% (Very High)	★★★★★
★★★★★	Carcass conformation (1-15 scale)	1.21 scale	91% (Very High)	★★★★★
EXPECTED DAUGHTER BREEDING PERFORMANCE				
	Daughter calving difficulty (% 3 & 4)	5.38%	38% (Low)	
★★★★★	Daughter milk (kg)	7kg	39% (Low)	★★★★★
★★★★★	Daughter calving interval (days)	0 days	42% (Average)	★★★★★

HAMLET
HILLCREST VALENTINE (ET)
HILLCREST JACQUELINE ET
CALDWELL POTENTATE P 57
KEELDRUM FANCY V17
KEELDRUM FANCY

AHC AUROCH DEUTER PP

DOB: 04/12/2012

HERD BOOK NO.: SIMIRLM171059830414

CALVING EASE
EASY
AVERAGE
MATURE COWS ONLY

SIMMENTAL



- + Homozygous polled, all the progeny are born without horns
- + Progeny are average in size, very stylish well-balanced animals
- + Short gestation
- + + 11 kgs on Milk

AHC son, Coose Gambler, Ronan Tuohy, Whitegate, Co. Clare



AHC daughter, Hubert Nicholson, Slane, Co. Meath

Source: ICBF AUGUST '16

GENOMIC INDEX

Star Rating (within breed)	Economic Indexes	Euro value per progeny	Index reliability	Star Rating (across all beef breeds)
★★★★★	REPLACEMENT	€107	47% (Average)	★★★★★
★★★★★	TERMINAL	€61	59% (Average)	★★★★★
Star Rating (within breed)	Key profit traits	Index value	Trait reliability	Star Rating (across all beef breeds)
EXPECTED PROGENY PERFORMANCE				
	Calving difficulty (% 3 & 4)	6%	91% (Very High)	
★★★★★	Gestation Length	2.15d	94% (Very High)	★★★★★
★★★★★	Docity (1-5 scale)	0.04 scale	80% (High)	★★★★★
★★★★★	Carcass weight (kg)	14kg	54% (Average)	★★★★★
★★★★★	Carcass conformation (1-15 scale)	1.08 scale	44% (Average)	★★★★★
EXPECTED DAUGHTER BREEDING PERFORMANCE				
	Daughter calving difficulty (% 3 & 4)	6.51%	35% (Low)	
★★★★★	Daughter milk (kg)	11kg	37% (Low)	★★★★★
★★★★★	Daughter calving interval (days)	-0.8 days	35% (Low)	★★★★★

ROGANT
PHS POLLED WORLDWIDE 14W
ROLLING ACRES RED FERN
DIRNANEAN TELSTAR
AUROCH ABSOLUTE P ET
RACEVIEW MISTY-JADE

Home to 9 of the top 10 most used Beef A.I. Sires in Ireland

RGZ TUBRIDMORE GIZMO E.T. (ET)

DOB: 12/01/2010

HERD BOOK NO.: AANIRLM191252470410



REPLACEMENT



FINISHING

CALVING EASE
☒ EASY
☐ AVERAGE
☐ MATURE COWS ONLY

ABERDEEN ANGUS



NCBC
Ireland
Genetics

Star Rating (within breed)	Economic Indexes	Euro value per progeny	Index reliability	Star Rating (across all beef breeds)
★★★★★	REPLACEMENT	€181	74% (High)	★★★★★
★★★★★	TERMINAL	€77	91% (Very High)	★★★★★
Star Rating (within breed)	Key profit traits	Index value	Trait reliability	Star Rating (across all beef breeds)
EXPECTED PROGENY PERFORMANCE				
	Calving difficulty (% 3 & 4)	2.7%	99% (Very High)	
★★★★★	Gestation Length	-1d	99% (Very High)	★★★★★
★★★★★	Docility (1-5 scale)	-0.01 scale	97% (Very High)	★★★★★
★★★★★	Carcass weight (kg)	9kg	99% (Very High)	★★★★★
★★★★★	Carcass conformation (1-15 scale)	0.81 scale	99% (Very High)	★★★★★
EXPECTED DAUGHTER BREEDING PERFORMANCE				
	Daughter calving difficulty (% 3 & 4)	7.19%	73% (High)	
★★★★★	Daughter milk (kg)	10kg	77% (High)	★★★★★
★★★★★	Daughter calving interval (days)	-8.3 days	52% (Average)	★★★★★

Source: CBF AUGUST '16



RGZ Weanling

GENOMIC INDEX

+ No. 2 Angus available on Replacement Index	+ One of the best Angus bulls available to breed replacements without compromising on terminal traits.	+ Excellent on Milk (+10kgs), and Fertility traits; Calving Interval -8.3 days	+ Easy calving, short gestation. Suitable for suckler maidens
--	--	--	---

SAV 8180 TRAVELER 004

SAV NET WORTH 4200

SAV MAY 2410

TC FREEDOM 104

YOUNG DALE ELBA 23N[ET](IMP)

YONUG DALE ELBA 18L

Home to 9 of the top 10 most used Beef A.I. Sires in Ireland

AA2025 STEIL KNOCKRANNY 248

DOB: 04/09/2013

HERD BOOK NO.: AANIRLM31135550248

CALVING EASE
☒ EASY
☐ AVERAGE
☐ MATURE
 COWS ONLY

ABERDEEN ANGUS



Star Rating (within breed)	Economic Indexes	Euro value per progeny	Index reliability	Star Rating (across all beef breeds)
★★★★★	REPLACEMENT	€151	45% (Average)	★★★★★
★★★★★	TERMINAL	€90	56% (Average)	★★★★★
Star Rating (within breed)	Key profit traits	Index value	Trait reliability	Star Rating (across all beef breeds)
EXPECTED PROGENY PERFORMANCE				
	Calving difficulty (% 3 & 4)	1.3%	96% (Very High)	
★★★★★	Gestation Length	-3.04d	99% (Very High)	★★★★★
★★★★★	Docity (1-5 scale)	0.13 scale	49% (Average)	★★★★★
★★★★★	Carcass weight (kg)	8kg	47% (Average)	★★★★★
★★★★★	Carcass conformation (1-15 scale)	0.46 scale	40% (Average)	★★★★★
EXPECTED DAUGHTER BREEDING PERFORMANCE				
	Daughter calving difficulty (% 3 & 4)	7.35%	38% (Low)	
★★★★★	Daughter milk (kg)	8kg	44% (Average)	★★★★★
★★★★★	Daughter calving interval (days)	-6.3 days	37% (Low)	★★★★★

Source: CBF AUGUST '16



Knockranny son, 3 weeks old

GENOMIC INDEX

- + Easy calving, short gestation. Suitable for suckler maidens
- + His Sire, Te Mania Berkley, is an easy calving short gestation sire from Australia
- + His dam, Steil Chubby is a traditional type cow and a proven breeder of superior stock

TE MANIA YORKSHIRE Y436
TE MANIA BERKLEY B1
 TE MANIA LOWAN Z53 ET
 DRUMAHILLAN ROY
STEIL CHUBBY
 STEIL SHADY

AA4087 GOULDING MAN O MAN

DOB: 14/03/2015

HERD BOOK NO.: AANIRLM191198950688

NEW

TEST



ABERDEEN ANGUS

NCBC
Ireland
Genetics

Star Rating (within breed)	Economic Indexes	Euro value per progeny	Index reliability	Star Rating (across all beef breeds)
★★★★★	REPLACEMENT	€147	39% (Low)	★★★★★
★★★★★	TERMINAL	€103	43% (Average)	★★★★★

Star Rating (within breed)	Key profit traits	Index value	Trait reliability	Star Rating (across all beef breeds)
EXPECTED PROGENY PERFORMANCE				
	Calving difficulty (% 3 & 4)	1.90%	48% (Average)	
★☆☆☆☆	Gestation Length	-5d	37% (Low)	★★★★★
★★★★★	Docity (1-5 scale)	0.20scale	44% (Average)	★★★★★
★★★★★	Carcass weight (kg)	18kg	47% (Average)	★★★★★
★★★★★	Carcass conformation (1-15 scale)	0.68 scale	39% (Low)	★★★★★
EXPECTED DAUGHTER BREEDING PERFORMANCE				
	Daughter calving difficulty (% 3 & 4)	7.58%	36% (Low)	
★★★★★	Daughter milk (kg)	12.00kg	39% (Low)	★★★★★
★★★★★	Daughter calving interval (days)	-5.08days	34% (Low)	★★★★★

Source: ICBF AUGUST '16

Goulding Man O Man @ 6 months



Sire : ABBERTON EMINEM M285

GENOMIC INDEX

+	Man O Man is an impressive heavily-muscled high performance Angus	+	Suitable for beef producers looking for an Angus with extra shape	+	Carrier of the double muscle gene nt821	+	Man O Man comes from a proven maternal line	+	No. 2 bull available in Irish A.I. on Terminal Index
---	---	---	---	---	---	---	---	---	--

ABBERTON DAZZLE G160
ABBERTON EMINEM M285
ABBERTON ERICA H187

Goulding Extra ET
GOULDING GRACEFUL PATRIOT ET
DARIMA PATRIOT Z082

KYA CORNAMUCKLA LORD HARDY K222

DOB: 19/02/2010

HERD BOOK NO.: AANIRLM121213180222

CALVING EASE
☒ EASY
☐ AVERAGE
☐ MATURE COWS ONLY

ABERDEEN ANGUS



- + A confirmed Superstar!!
- + A must for pedigree breeders who sell bulls to dairy farmers i.e the majority
- + Shortest gestation beef bull available
- + Great combination of Calving ease, short Gestation, Angus character and Quality

CORNAMUCKLA LORD HARDY K222 @13 months

GENOMIC INDEX

Star Rating (within breed)	Economic Indexes	Euro value per progeny	Index reliability	Star Rating (across all beef breeds)
★★★★★	REPLACEMENT	€141	83% (High)	★★★★★
★★★★★	TERMINAL	€87	93% (Very High)	★★★★★
Star Rating (within breed)	Key profit traits	Index value	Trait reliability	Star Rating (across all beef breeds)
EXPECTED PROGENY PERFORMANCE				
	Calving difficulty (% 3 & 4)	0.9%	99% (Very High)	
★★★★★	Gestation Length	-4.52d	99% (Very High)	★★★★★
★★★★★	Docility (1-5 scale)	-0.02 scale	99% (Very High)	★★★★★
★★★★★	Carcass weight (kg)	0kg	99% (Very High)	★★★★★
★★★★★	Carcass conformation (1-15 scale)	0.5 scale	99% (Very High)	★★★★★
EXPECTED DAUGHTER BREEDING PERFORMANCE				
	Daughter calving difficulty (% 3 & 4)	6.89%	86% (Very High)	
★★★★★	Daughter milk (kg)	1kg	87% (Very High)	★★★★★
★★★★★	Daughter calving interval (days)	-9 days	64% (Average)	★★★★★

Source: ICBF AUGUST '16

TIVANAGH BARON
 CARTRONROE ERNIE
 CARTRONROE PAULINE
 SUNSET ACRES BANG
 DRUMCROW LADY HILDA
 LADY OF HADDO OF LAWSONSFORD

AA2123 CHRISTON ELTON P623

DOB: 08/03/2014

HERD BOOK NO.: AANGBRM342858203623

PROOF PENDING

ABERDEEN ANGUS



- + Elton was selected for his combination of calving ease, short gestation, performance and maternal traits
- + Outcross pedigree
- + High genomic index for milk, fertility and gestation length

AA2123 Ardrossan Admiral sire of Christon Elton

GENOMIC INDEX

Star Rating (within breed)	Economic Indexes	Euro value per progeny	Index reliability	Star Rating (across all beef breeds)
★★★★★	REPLACEMENT	€115	37% (Low)	★★★★★
★★★★★	TERMINAL	€79	40% (Average)	★★★★★
Star Rating (within breed)	Key profit traits	Index value	Trait reliability	Star Rating (across all beef breeds)
EXPECTED PROGENY PERFORMANCE				
	Calving difficulty (% 3 & 4)	2.5%	48% (Average)	
★★★★★	Gestation Length	-1.98d	46% (Average)	★★★★★
★★★★★	Docility (1-5 scale)	0.04 scale	39% (Low)	★★★★★
★★★★★	Carcass weight (kg)	10kg	40% (Average)	★★★★★
★★★★★	Carcass conformation (1-15 scale)	0.25 scale	39% (Low)	★★★★★
EXPECTED DAUGHTER BREEDING PERFORMANCE				
	Daughter calving difficulty (% 3 & 4)	5.95%	34% (Low)	
★★★★★	Daughter milk (kg)	8kg	40% (Average)	★★★★★
★★★★★	Daughter calving interval (days)	-2.9 days	33% (Low)	★★★★★

Source: ICBF AUGUST '16

ARDROSSAN DIRECTION W109
 ARDROSSAN ADMIRAL A2
 KENNY'S CREEK ROSEBUD W171
 ROCKN D AMBUSH 1531
 CHRISTON ELLE F661
 CHRISTON ELLE

Home to 9 of the top 10 most used Beef A.I. Sires in Ireland

AA4086 MARIANHILL L PAPA

DOB: 16/10/2014

HERD BOOK NO.: AANIRLM191285340516

NEW

TEST



ABERDEEN ANGUS

NCBC
Ireland
Genetics

Star Rating (within breed)	Economic Indexes	Euro value per progeny	Index reliability	Star Rating (across all beef breeds)
★★★★★	REPLACEMENT	€107	44% (Average)	★★★★★
★★★★★	TERMINAL	€73	47% (Average)	★★★★★
Star Rating (within breed)	Key profit traits	Index value	Trait reliability	Star Rating (across all beef breeds)
EXPECTED PROGENY PERFORMANCE				
	Calving difficulty (% 3 & 4)	1.5%	50% (Average)	
★★★★★	Gestation Length	-0.29d	59% (Average)	★★★★★
★★★★★	Dolcity (1-5 scale)	0.02scale	55% (Average)	★★★★★
★★★★★	Carcass weight (kg)	6kg	50% (Average)	★★★★★
★★★★★	Carcass conformation (1-15 scale)	0.32 scale	45% (Average)	★★★★★
EXPECTED DAUGHTER BREEDING PERFORMANCE				
	Daughter calving difficulty (% 3 & 4)	%	46% (-)	
★★★★★	Daughter milk (kg)	10kg	46% (Average)	★★★★★
★★★★★	Daughter calving interval (days)	-3.28 days	38% (Low)	★★★★★

Source: CBF AUGUST '16



GENOMIC INDEX

- Marianhill L Papa was selected for his combination of calving ease, short gestation, performance & overall quality
- Four generations of easy calving sires in his pedigree; Nightingale Papa, EOB, Minit of Liss (MTL) & Allencroft JCT Andy
- Excellent pedigree for maternal traits

NIGHTINGALE PRIDE CINI U3
NIGHTINGALE PAPA A069
 DARIMA ESTER E220
 EDMUNDO OF BALLINULTY
HF DATA BANK 2H
 DARIMA ESTER A115

GJB GOULDING JUMBO KING K436 ET

DOB: 10/03/2010

HERD BOOK NO.: AANIRLM191198990436



CALVING EASE
EASY
AVERAGE
MATURE COWS ONLY

ABERDEEN ANGUS



- + An excellent choice for beef finishers
- + On average GJB progeny were finished 26 days ahead of their herdmates
- + One of the best bulls available to improve female fertility traits. No. 1 proven Angus available on Age at 1st calving, Cow Survival & Calving interval
- + No. 1 Proven Angus available on Maternal Calving difficulty

GENOMIC INDEX

Star Rating (within breed)	Economic Indexes	Euro value per progeny	Index reliability	Star Rating (across all beef breeds)
★★★★★	REPLACEMENT	€154	83% (High)	★★★★★
★★★★★	TERMINAL	€69	95% (Very High)	★★★★★
Star Rating (within breed)	Key profit traits	Index value	Trait reliability	Star Rating (across all beef breeds)
EXPECTED PROGENY PERFORMANCE				
	Calving difficulty (% 3 & 4)	3.2%	99% (Very High)	
★★★★★	Gestation Length	-1.64d	99% (Very High)	★★★★★
★★★★★	Docility (1-5 scale)	0.01 scale	99% (Very High)	★★★★★
★★★★★	Carcass weight (kg)	14kg	99% (Very High)	★★★★★
★★★★★	Carcass conformation (1-15 scale)	0.45 scale	99% (Very High)	★★★★★
EXPECTED DAUGHTER BREEDING PERFORMANCE				
	Daughter calving difficulty (% 3 & 4)	4.64%	86% (Very High)	
★★★★★	Daughter milk (kg)	-1kg	90% (Very High)	★★★★★
★★★★★	Daughter calving interval (days)	-11.5 days	64% (Average)	★★★★★

Source: ICBF AUGUST '16



GJB Daughter, Ashtown Katie

BELVIN KINCAID 27'00
AYNHO ROSSITER ERIC B125
 AYNHO ROSA ERICA Y294
 FORDEL EISENHOWER Y423
MOHILL BELLA
 MOHILL URSULA

EMS DOON ERASMUS (RLW)

DOB: 31/01/2013

HERD BOOK NO.: MSHIRLM311307990307

CALVING EASE
EASY
AVERAGE
MATURE COWS ONLY

SHORTHORN



- + Erasmus has left his mark with his first crop of calves
- + Sire of Senior All-Ireland Calf Champion 2016, Glann Fenian
- + Erasmus is a son of Perfect Storm and has brought many of his qualities
- + Use to improve maternal traits without compromising on terminal traits

GENOMIC INDEX

Star Rating (within breed)	Economic Indexes	Euro value per progeny	Index reliability	Star Rating (across all beef breeds)
★★★★★	REPLACEMENT	€107	47% (Average)	★★★★★
★★★★★	TERMINAL	€57	59% (Average)	★★★★★
Star Rating (within breed)	Key profit traits	Index value	Trait reliability	Star Rating (across all beef breeds)
EXPECTED PROGENY PERFORMANCE				
	Calving difficulty (% 3 & 4)	4.8%	90% (Very High)	
★★★★★	Gestation Length	1.8d	93% (Very High)	★★★★★
★★★★★	Docility (1-5 scale)	0.07 scale	61% (Average)	★★★★★
★★★★★	Carcass weight (kg)	12kg	54% (Average)	★★★★★
★★★★★	Carcass conformation (1-15 scale)	0.88 scale	45% (Average)	★★★★★
EXPECTED DAUGHTER BREEDING PERFORMANCE				
	Daughter calving difficulty (% 3 & 4)	6.45%	40% (Average)	
★★★★★	Daughter milk (kg)	7kg	43% (Average)	★★★★★
★★★★★	Daughter calving interval (days)	-2 days	37% (Low)	★★★★★

Source: ICBF AUGUST '16



Doon Erasmus son, Glann Fenian, Senior All Ireland Calf Champion

ALTA CEDAR PRAIRIE STORM 47R
ALTA CEDAR PERFECT STORM 11U
 ALTA CEDAR SILVER MAISIE 59S
 LICKEEN ENDA 5TH
BUSHYPARK LASSIE 3RD (RO)
 BUSHYPARK LASSIE

Home to 9 of the top 10 most used Beef A.I. Sires in Ireland

SH2181 COOLVIN DOMINATOR (R)

DOB: 09/02/2014

HERD BOOK NO.: MSHIRLM361102810329

PROOF
PENDING

TEST



- + No. 1 Shorthorn in Irish A.I. on Replacement Index
- + Son of the proven superior maternal sire Sliabhbhui Prince (SBU) from a milky consistent breeder
- + Dominator himself has excellent skeletal structure, perfect legs & feet, excellent wide open pelvis
- + Easily fleshed bull



Sire, Sliabhbhui Prince

Source: ICBF AUGUST '16

Star Rating (within breed)	Economic Indexes	Euro value per progeny	Index reliability	Star Rating (across all beef breeds)
★★★★★	REPLACEMENT	€142	46% (Average)	★★★★★
★★★★★	TERMINAL	€44	48% (Average)	★★★★★
Star Rating (within breed)	Key profit traits	Index value	Trait reliability	Star Rating (across all beef breeds)
EXPECTED PROGENY PERFORMANCE				
	Calving difficulty (% 3 & 4)	4.3%	51% (Average)	
★★★★★	Gestation Length	2.57d	46% (Average)	★★★★★
★★★★★	Docility (1-5 scale)	0.05 scale	54% (Average)	★★★★★
★★★★★	Carcass weight (kg)	11kg	52% (Average)	★★★★★
★★★★★	Carcass conformation (1-15 scale)	0.52 scale	48% (Average)	★★★★★
EXPECTED DAUGHTER BREEDING PERFORMANCE				
	Daughter calving difficulty (% 3 & 4)	6.85%	45% (Average)	
★★★★★	Daughter milk (kg)	11kg	47% (Average)	★★★★★
★★★★★	Daughter calving interval (days)	-3.1 days	43% (Average)	★★★★★

EIONMOR MR GUS 80C BEEF

SLIABHBHUI PRINCE 2ND

NOHOVAL ENDA BETTY

KILFRUSH VANTAGE 7TH

COOLVIN BELLE 1ST (DRO)

MOYGARA BUTTERCUP (DRO)

SFT SEAFIELD TITAN (RO)

DOB: 17/04/2008

HERD BOOK NO.: MSHIRLM321082380052



CALVING EASE
EASY
AVERAGE
MATURE COWS ONLY



- + Use to breed milky fertile replacements
- + +7 kgs Milk @ 82% reliability
- + 5 star across breed on Age at 1st calving, 4 star across breed on Calving Interval

Star Rating (within breed)	Economic Indexes	Euro value per progeny	Index reliability	Star Rating (across all beef breeds)
★★★★★	REPLACEMENT	€91	79% (High)	★★★★★
★★★★★	TERMINAL	€19	91% (Very High)	★★★★★
Star Rating (within breed)	Key profit traits	Index value	Trait reliability	Star Rating (across all beef breeds)
EXPECTED PROGENY PERFORMANCE				
	Calving difficulty (% 3 & 4)	5.4%	97% (Very High)	
★★★★★	Gestation Length	1.69d	98% (Very High)	★★★★★
★★★★★	Docility (1-5 scale)	0.14 scale	96% (Very High)	★★★★★
★★★★★	Carcass weight (kg)	6kg	97% (Very High)	★★★★★
★★★★★	Carcass conformation (1-15 scale)	0.5 scale	96% (Very High)	★★★★★
EXPECTED DAUGHTER BREEDING PERFORMANCE				
	Daughter calving difficulty (% 3 & 4)	8.67%	74% (High)	
★★★★★	Daughter milk (kg)	7kg	82% (High)	★★★★★
★★★★★	Daughter calving interval (days)	-1.2 days	62% (Average)	★★★★★

Source: ICBF AUGUST '16

ISLANDBAWN MOLONY

CASTLETROY BERTIE

CASTLETROY CROCUS 6TH

UPPERMILL LOCH ALSH

Seafield Ruby

Seafield Belle

Home to 9 of the top 10 most used Beef A.I. Sires in Ireland

SHORTHORN

SHORTHORN

SA2153 HIGHFIELD ODRAN

DOB: 31/01/2014

HERD BOOK NO.: SALIRLM141840910238

PROOF
PENDING

TEST



- + No. 1 Saller bull in Irish A.I. on Replacement Index
- + No. 1 Saller standing in Irish A.I. on temperament
- + First calves were born very easily
- + Excellent quality bull with a great top, pelvis and legs & feet

SALERS

GENOMIC INDEX

Star Rating (within breed)	Economic Indexes	Euro value per progeny	Index reliability	Star Rating (across all beef breeds)
★★★★★	REPLACEMENT	€161	44% (Average)	★★★★★
★★★★★	TERMINAL	€128	48% (Average)	★★★★★
Star Rating (within breed)	Key profit traits	Index value	Trait reliability	Star Rating (across all beef breeds)
EXPECTED PROGENY PERFORMANCE				
	Calving difficulty (% 3 & 4)	2.6%	49% (Average)	
★★★★★	Gestation Length	1.12d	59% (Average)	★★★★★
★★★★★	Docility (1-5 scale)	-0.05 scale	54% (Average)	★★★★★
★★★★★	Carcass weight (kg)	26kg	51% (Average)	★★★★★
★★★★★	Carcass conformation (1-15 scale)	1.15 scale	46% (Average)	★★★★★
EXPECTED DAUGHTER BREEDING PERFORMANCE				
	Daughter calving difficulty (% 3 & 4)	5.43%	42% (Average)	
★★★★★	Daughter milk (kg)	5kg	46% (Average)	★★★★★
★★★★★	Daughter calving interval (days)	-3.3 days	38% (Low)	★★★★★

Source: ICBF AUGUST '16

ROMAIN
VAILLANT
RITA
PRECIEUX
DRUMLEGAGH ALEXANDRA (UK 09)
DRUMLEGAGH QUINTINA

PZB BONAPARTE

DOB: 21/01/2006

HERD BOOK NO.: SALFRAM001526238768



CALVING EASE
✓ EASY
□ AVERAGE
□ MATURE COWS ONLY



- + Easy calving, very short gestation. Suitable for maiden heifers.
- + 5 star across breed on all the fertility traits; Age at 1st calving, Calving Interval & Cow Survival
- + Excellent on Carcass Weight & Carcass Conformation
- + One of the highest Saller bulls available on Carcass Conformation

SALERS

GENOMIC INDEX

Star Rating (within breed)	Economic Indexes	Euro value per progeny	Index reliability	Star Rating (across all beef breeds)
★★★★★	REPLACEMENT	€71	67% (High)	★★★★★
★★★★★	TERMINAL	€97	90% (Very High)	★★★★★
Star Rating (within breed)	Key profit traits	Index value	Trait reliability	Star Rating (across all beef breeds)
EXPECTED PROGENY PERFORMANCE				
	Calving difficulty (% 3 & 4)	3.2%	97% (Very High)	
★★★★★	Gestation Length	0.53d	98% (Very High)	★★★★★
★★★★★	Docility (1-5 scale)	-0.28 scale	95% (Very High)	★★★★★
★★★★★	Carcass weight (kg)	17kg	96% (Very High)	★★★★★
★★★★★	Carcass conformation (1-15 scale)	1.32 scale	94% (Very High)	★★★★★
EXPECTED DAUGHTER BREEDING PERFORMANCE				
	Daughter calving difficulty (% 3 & 4)	8.02%	55% (Average)	
★★★★★	Daughter milk (kg)	-3kg	61% (Average)	★★★★★
★★★★★	Daughter calving interval (days)	-2.7 days	44% (Average)	★★★★★

Source: ICBF AUGUST '16

Robin
Ublo
Ines
Junot
ORGUILLE
Espagne

Home to 9 of the top 10 most used Beef A.I. Sires in Ireland



- + Great satisfaction with Duches progeny in Ireland
- + Excellent performers in finishing units, Weight, Shape & Feed efficiency
- + Super temperament
- + 4 star across breed on Replacement Index

AUBRAC

GENOMIC INDEX

Star Rating (within breed)	Economic Indexes	Euro value per progeny	Index reliability	Star Rating (across all beef breeds)
★★★★★	REPLACEMENT	€73	35% (Low)	★★★★★
★★★★★	TERMINAL	€73	66% (High)	★★★★★
Star Rating (within breed)	Key profit traits	Index value	Trait reliability	Star Rating (across all beef breeds)
EXPECTED PROGENY PERFORMANCE				
	Calving difficulty (% 3 & 4)	6.4%	86% (Very High)	
★★★★★	Gestation Length	1.58d	93% (Very High)	★★★★★
★★★★★	Docility (1-5 scale)	0.16 scale	72% (High)	★★★★★
★★★★★	Carcass weight (kg)	13kg	72% (High)	★★★★★
★★★★★	Carcass conformation (1-15 scale)	1.68 scale	62% (Average)	★★★★★
EXPECTED DAUGHTER BREEDING PERFORMANCE				
	Daughter calving difficulty (% 3 & 4)	6.65%	10% (Very Low)	
★★★★★	Daughter milk (kg)	2kg	26% (Very Low)	★★★★★
★★★★★	Daughter calving interval (days)	0.4 days	14% (Very Low)	★★★★★

Source: ICBF AUGUST '16

SUPER
VAILLANT
JOUeuse
C.MARTIN NARQUOIS
SATGEOUNO
C.MARTIN ESPERANCE

BA2308 STONELEA INZAGI

DOB: 05/04/2015

HERD BOOK NO.: BAQIRLM311056340079

PROOF PENDING

TEST



- + No. 1 genomically tested Blonde in Irish A.I. on Replacement Index
- + 5 star bull (within breed) on Replacement Index, Gestation length, Docility, Milk and Calving Interval
- + We await his first calves with high expectations

BLONDE D'AQUITAINE

GENOMIC INDEX

Star Rating (within breed)	Economic Indexes	Euro value per progeny	Index reliability	Star Rating (across all beef breeds)
★★★★★	REPLACEMENT	€79	35% (Low)	★★★★★
★★★★★	TERMINAL	€106	40% (Average)	★★★★★
Star Rating (within breed)	Key profit traits	Index value	Trait reliability	Star Rating (across all beef breeds)
EXPECTED PROGENY PERFORMANCE				
	Calving difficulty (% 3 & 4)	4.1%	42% (Average)	
★★★★★	Gestation Length	2.97d	33% (Low)	★★★★★
★★★★★	Docility (1-5 scale)	0.04 scale	35% (Low)	★★★★★
★★★★★	Carcass weight (kg)	21kg	44% (Average)	★★★★★
★★★★★	Carcass conformation (1-15 scale)	1.4 scale	34% (Low)	★★★★★
EXPECTED DAUGHTER BREEDING PERFORMANCE				
	Daughter calving difficulty (% 3 & 4)	5%	32% (Low)	
★★★★★	Daughter milk (kg)	-2kg	34% (Low)	★★★★★
★★★★★	Daughter calving interval (days)	-0.6 days	31% (Low)	★★★★★

Source: ICBF AUGUST '16



Sire, Seaview Barney

ASHTON LODGE TYSON
Seaview Barney
Seaview Twinkle
Shanvalley Dancer
Seaview Gemme
Seaview Aimee

Home to 9 of the top 10 most used Beef A.I. Sires in Ireland

HE2043 SOLPOLL 1 KENTUCKY KID PP HYF

DOB: 02/04/2013

HERD BOOK NO.: HERGBRM933001327113

CALVING EASE
EASY
AVERAGE
MATURE
COWS ONLY

HOMO-POLLED



- + No. 2 Hereford bull available in Irish A.I. on Replacement Index
- + What a superstar; easy calving, short gestation, excellent on Replacement & Terminal traits
- + A must for Hereford breeders selling bulls to dairy farmers i.e the majority
- + Progeny are exceptional; excellent growth, excellent muscle development on the back and hindquarter, excellent colour and correct

Star Rating (within breed)	Economic Indexes	Euro value per progeny	Index reliability	Star Rating (across all beef breeds)
★★★★★	REPLACEMENT	€106	38% (Low)	★★★★★
★★★★★	TERMINAL	€64	47% (Average)	★★★☆☆
Star Rating (within breed)	Key profit traits	Index value	Trait reliability	Star Rating (across all beef breeds)
EXPECTED PROGENY PERFORMANCE				
	Calving difficulty (% 3 & 4)	3.9%	91% (Very High)	
★★★★★	Gestation Length	-0.82d	98% (Very High)	★★★★★
★★★★★	Docility (1-5 scale)	0.16 scale	31% (Low)	★★★★★
★★★★★	Carcass weight (kg)	6kg	32% (Low)	★★★☆☆
★★★☆☆	Carcass conformation (1-15 scale)	0.3 scale	32% (Low)	★★★☆☆
EXPECTED DAUGHTER BREEDING PERFORMANCE				
	Daughter calving difficulty (% 3 & 4)	5.22%	33% (Low)	
★★★★★	Daughter milk (kg)	6kg	32% (Low)	★★★★★
★★★★★	Daughter calving interval (days)	-2.8 days	32% (Low)	★★★★★



Sire, Panmure 1 Henry

Source: ICBF AUGUST 16

- ROMANY 1 DISTILLER A84 D53
- PANMURE 1 HENRY
- PANURE 1 PLUM E2
- SOLPOLL 1 CANTONA
- SOLPOLL 1 STARLET E16
- SOLPOLL 1 STARLET B1

SPL SOLPOLL 1 HANDSOME {HYC}

DOB: 16/09/2010

HERD BOOK NO.: HERGBRM933001325282

CALVING EASE
EASY
AVERAGE
MATURE
COWS ONLY

HOMO-POLLED



- + No. 1 Hereford bull available on Replacement Index
- + Great combination of Calving ease, short Gestation, Maternal & Terminal traits
- + Not suitable for pedigree breeding

Star Rating (within breed)	Economic Indexes	Euro value per progeny	Index reliability	Star Rating (across all beef breeds)
★★★★★	REPLACEMENT	€117	64% (Average)	★★★★★
★★★★★	TERMINAL	€66	90% (Very High)	★★★☆☆
Star Rating (within breed)	Key profit traits	Index value	Trait reliability	Star Rating (across all beef breeds)
EXPECTED PROGENY PERFORMANCE				
	Calving difficulty (% 3 & 4)	3.5%	99% (Very High)	
★★★★★	Gestation Length	0.42d	99% (Very High)	★★★★★
★★★★★	Docility (1-5 scale)	0.11 scale	92% (Very High)	★★★★★
★★★★★	Carcass weight (kg)	3kg	99% (Very High)	★★★☆☆
★★★★★	Carcass conformation (1-15 scale)	0.57 scale	98% (Very High)	★★★☆☆
EXPECTED DAUGHTER BREEDING PERFORMANCE				
	Daughter calving difficulty (% 3 & 4)	4.53%	50% (Average)	
★★★★★	Daughter milk (kg)	3kg	48% (Average)	★★★★★
★★★★★	Daughter calving interval (days)	-3.9 days	44% (Average)	★★★★★



SPL daughter 1st prize winner
Charleville Show 2015

Source: ICBF AUGUST 16

- FISHER 1 WELLINGTON W91
- FISHER 1 CHARLIE
- FISHER 1 CLOVER W86
- UDEL 1 R51 VINDICATOR
- SOLPOLL 1 STARLET C3
- SOLPOLL 1 STARLET R33

Home to 9 of the top 10 most used Beef A.I. Sires in Ireland

HE2407 BALLEEN GENERAL 862 ET

DOB: 26/11/2014

HERD BOOK NO.: IE211134610862

NEW TEST



- + No. 1 Hereford bull available in Irish A.I. on Terminal Index
- + General is an exceptional quality Horned bull with excellent thickness through the body, top and hindquarter
- + Excellent on muscle development, weight gain, functionality and breed character
- + A Bishop General son from a proven cow family at Balleen, Prettymaid. We await his first calves with high expectations

HEREFORD

GENOMIC INDEX

Star Rating (within breed)	Economic Indexes	Euro value per progeny	Index reliability	Star Rating (across all beef breeds)
★★★★★	REPLACEMENT	€37	48% (Average)	★★★★★
★★★★★	TERMINAL	€72	49% (Average)	★★★★★
Star Rating (within breed)	Key profit traits	Index value	Trait reliability	Star Rating (across all beef breeds)
EXPECTED PROGENY PERFORMANCE				
	Calving difficulty (% 3 & 4)	5.3%	49% (Average)	
★★★★★	Gestation Length	2.41d	45% (Average)	★★★★★
★★★★★	Docility (1-5 scale)	0.24 scale	55% (Average)	★★★★★
★★★★★	Carcass weight (kg)	12kg	53% (Average)	★★★★★
★★★★★	Carcass conformation (1-15 scale)	0.79 scale	49% (Average)	★★★★★
EXPECTED DAUGHTER BREEDING PERFORMANCE				
	Daughter calving difficulty (% 3 & 4)	7.76%	45% (Average)	
★★★★★	Daughter milk (kg)	4kg	48% (Average)	★★★★★
★★★★★	Daughter calving interval (days)	-0.1 days	44% (Average)	★★★★★

Source: ICBF AUGUST'16

STANDARD LAD 93J IMP CAN
BISHOPHILL GENERAL
BISHOPHILL TEMPTRESS
BALLEEN LIGHTNING
BALLEEN PRETTYMAID 19
STAMEEN PRETTYMAID 38TH

DPS DOREPOLL 1 93N TRANSATLANTIC

DOB: 03/01/2009

HERD BOOK NO.: HERGBRM904121505535

HETERO-POLLED



- + All-round proven Hereford bull; Replacement and Terminal
- + No. 1 Proven Hereford sire on Replacement Index
- + High in Milk, Fertility and Calving ability
- + Excellent choice for finishers; No. 2 Hereford bull in Irish A.I. on Carcass weight

HEREFORD

GENOMIC INDEX

Star Rating (within breed)	Economic Indexes	Euro value per progeny	Index reliability	Star Rating (across all beef breeds)
★★★★★	REPLACEMENT	€99	79% (High)	★★★★★
★★★★★	TERMINAL	€48	91% (Very High)	★★★★★
Star Rating (within breed)	Key profit traits	Index value	Trait reliability	Star Rating (across all beef breeds)
EXPECTED PROGENY PERFORMANCE				
	Calving difficulty (% 3 & 4)	9.2%	99% (Very High)	
★★★★★	Gestation Length	1.15d	99% (Very High)	★★★★★
★★★★★	Docility (1-5 scale)	0.21 scale	95% (Very High)	★★★★★
★★★★★	Carcass weight (kg)	13kg	99% (Very High)	★★★★★
★★★★★	Carcass conformation (1-15 scale)	0.64 scale	99% (Very High)	★★★★★
EXPECTED DAUGHTER BREEDING PERFORMANCE				
	Daughter calving difficulty (% 3 & 4)	4.53%	81% (High)	
★★★★★	Daughter milk (kg)	3kg	84% (High)	★★★★★
★★★★★	Daughter calving interval (days)	-6.5 days	58% (Average)	★★★★★

Source: ICBF AUGUST'16

REMITALL KEYNOTE 20X
REMITALL NATION WIDE ET 93N
REMITALL CATALINA 24H
REMITALL GOVERNOR 2366
REMITALL SALLY 131K
REMITALL SALLY'S LASS 120X ET

Home to 9 of the top 10 most used Beef A.I. Sires in Ireland

REPLACEMENT LIMOUSIN BULLS

Standard Price	
Premium Price	
Elite Price	

	Name	Code	Genomic	Replacement Index	Rel	Stars Within	Stars Across	Calving	Rel	Docility	Rel	Daughter Calving	Rel	Daughter Milk	Rel	Daughter CI	Rel	Terminal Index	Rel	Stars Within	Stars Across	Replacement Index of
Available in the tank	CASTLEVIEW GAZELLE	ZAG	Y	184	58	5	5	4.8	99	-0.09	96	5.3	46	3.3	49	-3.52	43	138	75	5	5	21
Available in the tank	CASTLEVIEW GRINGO ET	GWO	Y	133	72	5	5	6.4	99	-0.09	99	3.3	63	-2.5	59	-2.53	52	126	94	4	5	72
Available in the tank	TOMSCHOICE IMPERIAL	LM2117	Y	131	36	5	5	2.8	48	0	39	5.7	34	0.6	36	0.46	33	130	40	4	5	74
Pre-Order	DOUDOU.TD	LM2321	Y	121	42	5	5	3	63	-0.03	38	6.2	34	9.1	49	0.71	32	94	51	1	3	84
Available in the tank	KELTIC HANDSOME	OKH	Y	121	52	5	5	6.1	97	0.05	88	6.0	44	0.8	48	-2.33	39	127	64	4	5	84
Pre-Order	VISON	VZN	Y	117	88	5	5	7.3	98	-0.04	97	4.3	87	1.9	94	0.05	72	111	92	2	4	88
Pre-Order	BROOKMILL VINDICATOR (ET)	VDT	Y	116	80	5	5	5.4	94	-0.11	93	3.2	75	-1.4	87	-2.34	63	127	88	4	5	89
Pre-Order	LENNON FROSTY (SEXED)	FTY-75S	Y	112	67	5	5	4.6	99	-0.13	98	6.5	55	-0.7	54	1.38	48	138	92	5	5	93
Available in the tank	TOMSCHOICE IRONSTONE	LM2116		110	13	5	5	3.3	53	0.04	15	5.5	7	3.7	10	1.42	6	120	22	4	4	95
Available in the tank	CARROWREACH HONDURAS	ZCH	Y	108	54	5	5	9.1	95	0	87	3.3	47	3.1	49	3.44	44	109	64	2	4	97
Pre-Order	OZEUS	OZS	Y	96	91	4	5	5.8	99	-0.06	99	3.8	94	0.7	97	1.08	76	111	97	2	4	109
Available in the tank	IDALGO PP	LM2214	Y	94	36	4	5	5.8	54	-0.06	33	4.6	32	-1.6	36	-0.34	31	153	43	5	5	111
Pre-Order	NELSON	NLO	Y	84	79	4	4	6.1	90	-0.07	86	4.4	77	2	86	2.88	67	125	83	4	4	121
Pre-Order	EDARKYA	LM2242		83	14	4	4	5.3	45	-0.07	2	5.0	3	2.5	19	0.49	1	92	27	1	3	122
Pre-Order	DAY	LM2190	Y	83	39	4	4	8.6	65	-0.03	31	4.2	32	-1	43	-0.14	32	120	47	4	4	122
Pre-Order	CAMEOS	LM2191	Y	77	42	3	4	5.9	62	-0.08	32	4.6	35	0.1	48	3.97	32	128	53	4	5	128
Pre-Order	LODGE HAMLET	LM4088	Y	76	43	3	4	5.8	81	0.08	57	5.9	35	-3.9	40	1.06	36	135	54	5	5	129
Available in the tank	GINO	OGN	Y	75	57	3	4	9.2	96	-0.13	95	4.4	37	3.4	41	3.15	41	93	83	1	3	130
Available in the tank	ELITE ICE CREAM ET	LM2206	Y	74	39	3	4	6.9	48	-0.02	47	4.9	34	-3.7	37	1.3	33	168	45	5	5	131
Available in the tank	IVOIRE PP	OEO	Y	73	40	3	4	5.1	89	0	44	4.4	32	-0.3	35	0.69	32	87	51	1	3	132

The minimum cow Replacement Index is the minimum required to achieve, on average, a daughter Replacement Index of 102.5 assuming a bull team reliability of 85%

MUN/PG have 6 of the top 10 Limousin bulls available on the active bull list on Replacement Index. Including 3 of the top 4.

(Active bull list Sept '16)

Data: ICBF AUG '16. Within breed stars are only relevant for pedigree registered cattle

Data: ICBF AUG '16. Within breed stars are only relevant for pedigree registered cattle

				Name	Code	Genomic	Replacement Index	Rel	Stars Within	Stars Across	Calving	Rel	Docility	Rel	Daughter Calving	Rel	Daughter Milk	Rel	Daughter CI	Rel	Terminal Index	Rel	Stars Within	Stars Across	Replacement Index of
	Standard Price	Premium Price	Elite Price																						
Available in the tank																									
Available in the tank						Y	164	48	5	5	4.1	55	0.06	57	4.4	45	12.6	50	-0.51	41	113	51	5	4	41
Available in the tank						Y	156	50	5	5	3.5	52	0.08	57	5.6	47	11.7	50	1.41	46	111	51	5	4	49
Available in the tank						Y	150	47	5	5	4.8	48	0.2	57	5.6	45	9.9	49	0	40	121	49	5	4	55
Pre-Order						Y	129	88	4	5	5.5	91	0.07	89	4.1	88	9.9	90	-4.1	83	19	89	1	1	76
Pre-Order						Y	121	92	4	5	5	93	0.14	91	3.8	93	10.4	94	0.03	91	43	90	1	1	84
Available in the tank						Y	118	91	4	5	4.9	99	0.06	99	14.7	95	2.8	97	-9.84	76	66	96	3	2	87
Available in the tank						Y	107	47	3	5	6	91	0.04	80	6.5	35	11.3	37	-0.81	35	61	59	2	2	98
Pre-Order						Y	102	71	3	5	5.3	94	-0.04	90	7.6	63	14.2	73	2.47	52	74	87	4	2	103
Available in the tank						Y	98	58	2	5	6.4	98	0.1	97	5.4	38	7	39	0	42	67	87	3	2	107
Pre-Order						Y	90	94	2	4	6.3	94	-0.07	93	5.6	94	8.6	96	-1.99	93	35	92	1	1	115
Pre-Order						Y	87	87	2	4	3.4	87	0.05	84	7.8	86	12.7	91	0.81	82	30	89	1	1	118

MUN/PG have 2 of the top 4 commercially priced Simmental bulls available on the active bull list on Replacement Index. Including the top bull.
(Commercially priced bulls \leq €20) (Active bull list Sept '16)

MUN/PG have 7 of the top 10 Hereford bulls available on the active bull list on Replacement Index. Including the top bull.

<div><div>Standard Price</div><div>Premium Price</div><div>Elite Price</div></div>	Name	Code	Genomic	Replacement Index	Rel	Stars Within	Stars Across	Calving	Rel	Docility	Rel	Daughter Calving	Rel	Daughter Milk	Rel	Daughter CI	Rel	Terminal Index	Rel	Stars Within	Stars Across	Replacement Index of Mate to a cow with a minimum
					(%)				(%)		(%)	(%)	(%)	(kgs)	(%)	(%)	(%)	(%)	(%)			
					64	5	5	3.5	99	0.11	92	4.5	50	2.5	48	-3.9	44	€66	90	5	2	€88
		HE2043	Y	€106	38	5	5	3.9	91	0.16	31	5.2	33	6.3	32	-2.8	32	€64	47	5	2	€99
		DPS	Y	€99	79	5	5	9.2	99	0.21	95	4.5	81	3.2	84	-6.5	58	€48	91	4	1	€106
	NETHERHALL 1 OZ DAFFY M040	HE2408	Y	€79	32	5	4	3	37	0.08	38	5.4	31	4.7	31	-2.3	31	€63	34	5	2	€126

REPLACEMENT CHAROLAIS BULLS

Standard Price	
Premium Price	
Elite Price	

Name	Code	Genomic	Replacement Index	Rel	Stars Within	Stars Across	Calving	Rel	Docility	Rel	Daughter Calving	Rel	Daughter Milk	Rel	Daughter CI	Rel	Terminal Index	Rel	(%)	Stars Within	Stars Across	Replacement Index of
Pre-Order	VOIMO	Y	€158	57	5	5	5.3	80	0.23	66	3.5	47	6.4	71	-1.5	37	€144	72	5	5	5	€47
Pre-Order	BLELACK DIGGER	Y	€155	62	5	5	5.6	94	0.08	92	4.1	50	6.0	62	-0.6	41	€150	84	5	5	5	€50
Pre-Order	BOURGOGNE		€123	30	5	5	6.6	54	0	15	4.2	21	5.7	51	-0.8	10	€105	41	2	3	3	€32
Pre-Order	CASTOR	Y	€120	49	5	5	4.1	65	0.02	42	3.7	42	6.0	61	-1.4	34	€124	58	4	4	4	€35
Pre-Order	TOLEDO	Y	€119	69	5	5	5.5	92	0.02	89	6.1	57	0.6	74	-4.5	49	€119	87	3	4	4	€36
Available in the tank	CAVELANDS FENIAN	Y	€113	68	5	5	6.1	99	0.06	99	5.5	59	-2.0	57	-4.2	46	€124	94	4	4	4	€32
Pre-Order	TREZEGOAL	Y	€111	63	5	5	4.7	84	0.04	79	3.7	54	3.0	76	0.9	44	€147	76	5	5	5	€34
Available in the tank	FIRODA JASON	Y	€106	43	5	5	7.8	50	0.08	57	4.9	40	2.5	42	-2.2	37	€148	49	5	5	5	€39
Available in the tank	FISTON	Y	€102	69	5	5	6.9	99	0.07	99	5.5	56	3.0	61	0.5	43	€157	95	5	5	5	€103
Pre-Order	FIRST	Y	€101	43	5	5	4.1	61	0.01	38	3.5	36	2.5	47	-0.9	33	€154	53	5	5	5	€104
Pre-Order	RANCARD	Y	€91	64	5	5	10.2	92	0.08	90	3.7	51	4.6	74	0.3	41	€118	84	3	4	4	€114
Pre-Order	VITTOZ	Y	€90	49	5	5	11.5	71	0.02	57	2.5	41	8.0	62	-1.7	33	€93	61	1	3	3	€115
Pre-Order	VIRGIL SC	Y	€89	50	5	5	4.1	66	0.06	44	3.5	45	-2.0	69	-0.8	33	€142	59	5	5	5	€116
Pre-Order	SYLVANER	Y	€88	58	5	5	6.6	75	0.02	66	3.5	53	2.0	74	-0.9	40	€156	69	5	5	5	€117
Pre-Order	ARTOIS	Y	€88	47	5	5	4.1	60	0.06	33	3.5	44	0.6	66	-0.6	32	€131	56	4	5	5	€117
Available in the tank	GEDEON	Y	€77	51	5	5	8.7	93	-0.01	89	4.3	33	5.5	39	0.4	37	€105	73	2	3	3	€128
Available in the tank	FLEETWOOD	Y	€74	70	5	5	6.9	99	0.13	99	3.5	62	-2.5	66	-1.5	45	€138	94	5	5	5	€131

Data: ICBF AUG '16. Within breed stars are only relevant for pedigree registered cattle

The minimum cow Replacement Index is the minimum required to achieve, on average, a daughter Replacement Index of 102.5 assuming a bull team reliability of 85%

MUN/PG have 8 of the top 12 Charolais bulls available on the active bull list on Replacement Index. Including the top two bulls.
(Active bull list Sept '16)

REPLACEMENT ANGUS BULLS

Standard Price	
Premium Price	
Elite Price	

	Name	Code	Genomic	Replacement Index	Rel	Stars Within	Stars Across	Calving	Rel	Docility	Rel	Daughter Calving	Rel	Daughter Milk	Rel	Terminal Index	Rel	Stars Within	Stars Across	Replacement Index of Mate to a cow with a minimum
Available in the tank	TUBRIDMORE GIZMO E.T. (ET)	RGZ	Y	€181	74	5	5	2.7	99	-0.01	97	7.2	73	9.7	77	€77	52	5	2	€24
Available in the tank	GOULDING JUMBO KING K436 ET	GJB	Y	€154	83	5	5	3.2	99	0.01	99	4.6	86	-0.8	90	€69	64	4	2	€51
Available in the tank	STEIL KNOCKRANNY 248	AA2025	Y	€151	45	5	5	1.3	96	0.13	49	7.4	38	7.7	44	€90	37	5	3	€54
Pre-Order	TE MANIA BERKLEY B1	S1206		€150	33	5	5	0.9	70	0.2	60	7.2	12	10.5	50	€112	6	5	4	€55
Pre-Order	NETHERTON AMERICANO M703	AA4057	Y	€149	44	5	5	1.4	84	0.03	61	6.2	34	10.7	37	€112	34	5	4	€56
Available in the tank	CORNAMUCKLA LORD HARDY K222	KYA	Y	€141	83	5	5	0.9	99	-0.02	99	6.9	86	1.2	87	€87	64	5	3	€94
Available in the tank	TE MANIA EMPEROR E 343	S2101		€135	17	5	5	1	51	0.11	20	6.7	5	9.5	21	€99	2	5	3	€70
Pre-Order	EARLY SUNSET HIGH TIME 81G	ESH	Y	€126	95	5	5	1.5	99	0.04	98	6.4	96	5.8	98	€48	94	1	1	€79
Pre-Order	SHADWELL JAFAR ERIC N658	AA2387		€125	15	5	5	3	22	-0.01	20	4.3	12	10.6	19	€70	8	4	2	€80
Pre-Order	HF REBEL 53Y	ZHF	Y	€121	37	5	5	2.2	73	0.1	37	6.1	32	6.0	32	€94	32	5	3	€84
Available in the tank	CHRISTON ELTON P623	AA2123	Y	€115	37	5	5	2.5	48	0.04	39	6.0	34	7.9	40	€79	33	5	2	€90
Pre-Order	TE MANIA RED LABEL Z1023	S738		€107	36	4	5	0.9	67	-0.01	47	6.4	13	5.3	43	€83	12	5	2	€98
Available in the tank	MARIANHILL L PAPA	AA4086	Y	€107	44	4	5	1.5	50	0.02	55	6.8	40	10.0	46	€73	30	4	3	€98
Available in the tank	JESANA GALAXY	JGY	Y	€103	81	4	5	2.4	99	0.07	98	8.8	80	5.9	79	€51	62	2	1	€102
Pre-Order	BALMACHIE RANNAI D005	RZI	Y	€101	70	4	5	1.8	86	-0.09	74	6.6	64	9.8	75	€88	55	5	3	€104
Available in the tank	CARTONROE ERNIE	CTE	Y	€101	94	4	5	0.6	97	-0.12	93	7.4	94	2.6	95	€82	93	5	2	€104
Available in the tank	ST AODAIN L MASTER	AA2309	Y	€95	44	3	5	1.8	48	0.01	46	7.1	44	3.7	45	€76	41	5	2	€110
Pre-Order	NIGHTINGALE EL PASO	S1447	Y	€86	50	3	4	8.1	80	-0.13	64	5.5	39	4.3	54	€114	35	5	4	€119
Available in the tank	TUBRIDMORE PRIDE K415	ZTP	Y	€81	67	2	4	0.8	99	-0.02	81	8.1	54	4.3	52	€25	54	1	1	€124

Data: ICBF AUG '16. Within breed stars are only relevant for pedigree registered cattle

The minimum cow Replacement Index is the minimum required to achieve, on average, a daughter Replacement Index of 102.5 assuming a bull team reliability of 85%

MUN/PG have 5 of the top 7 Angus bulls available on the active bull list on Replacement Index.
(Active bull list Sept '16)

REPLACEMENT BULLS - BLONDE D'AQUITAINE

Standard Price	
Premium Price	
Elite Price	

Name	Code	Genomic	Replacement Index	Rel (%)	Stars Across	Calving	Rel (%)	Docility	Rel (%)	Daughter Calving	Rel (%)	Daughter Milk (kgs)	Rel (%)	Daughter CI	Rel (%)	Terminal Index	Rel (%)	Stars Within	Stars Across	Mate to a cow with a minimum Replacement Index of
Available in the tank	STONELEA INZAGI	Y	79	35	5	4	4.1	42	35	5.0	32	-2.3	34	-0.61	31	106	40	1	3	126

Data: ICBF AUG '16. Within breed stars are only relevant for pedigree registered cattle

REPLACEMENT BULLS - SHORTHORN

Pre-Order	SPRYS PATENTS ACE G38 (P)	SH2202	Y	€159	48	5	5	4.2	85	0.12	83	6.8	36	8	32	-2.8	35	66	69	5	2	€46
Pre-Order	PAINT EARTH RAMA 53U (P)	PZT	Y	€146	54	5	5	3.8	83	0.09	69	6.8	40	7	43	-3.9	38	€42	74	5	1	€59
Available in the tank	COOLVIN DOMINATOR (R)	SH2181	Y	€142	46	5	5	4.3	51	0.05	54	6.9	45	11	47	-3.1	43	€44	48	5	1	€63
Pre-Order	GILENSLA EXPLORER 825 (P)	S1638	Y	€129	40	4	5	2.4	70	0.16	71	7.4	32	8	31	-1.8	33	€63	51	5	2	€76
Pre-Order	SPRYS EXCLUSIVE J13 (P)	SH2396	Y	€111	30	3	5	2.3	30	0.04	30	6.9	30	7	30	-2.3	30	€39	30	5	1	€94
Available in the tank	DOON ERASMUS (RLW)	EMS	Y	€107	47	2	5	4.8	90	0.07	61	6.5	40	7	43	-2.0	37	€57	59	5	1	€98
Available in the tank	SEAFIELD TITAN (RO)	SFT	Y	€91	79	1	5	5.4	97	0.14	96	8.7	74	7	82	-1.2	62	€19	91	3	1	€114

Data: ICBF AUG '16. Within breed stars are only relevant for pedigree registered cattle

MUN/PG have 4 of the top 5 Shorthorn bulls available on the active bull list on Replacement Index.
(Active bull list Sept '16)

REPLACEMENT BULLS - AUBRAC

Pre-Order	CONSENSUEL	S1272	Y	€189	50	5	5	4.1	69	0.01	53	5.3	42	8	61	-1.7	39	€141	58	5	5	€16
Pre-Order	HERITIER	S2203	Y	€121	38	3	5	1.3	64	-0.04	32	8.4	35	5	41	-1.3	32	€100	43	3	3	€84
Pre-Order	DUROC	S1273		€117	35	3	5	5.3	67	0	48	6.1	23	5	46	-2.3	13	€102	48	3	3	€88
Available in the tank	PERLOU	PRZ	Y	€116	89	3	5	4.3	97	-0.07	95	5.1	90	-2	93	-5.2	82	€94	91	2	3	€89
Pre-Order	HEUREUX	S2204	Y	€114	35	3	5	2.4	60	-0.01	30	6.6	31	2	35	-2.0	31	€94	40	2	3	€91
Pre-Order	BAYON 2	S580		€103	43	2	5	2	70	-0.28	48	6.2	31	4	59	-2.2	17	€73	55	1	2	€102
Available in the tank	DUCHES	DSH		€73	35	1	4	6.4	86	0.16	72	6.7	10	2	26	0.4	14	€73	66	1	2	€132

Data: ICBF AUG '16. Within breed stars are only relevant for pedigree registered cattle

The minimum cow Replacement Index is the minimum required to achieve, on average, a daughter Replacement Index of 102.5 assuming a bull team reliability of 85%

OZS OZEUS

DOB: 10/10/1998



HERD BOOK NO.: LIMFRAM001519127770

LIMFRAM

PRE-ORDER

GENOMIC INDEX



- + Proven Maternal Sire and a confirmed superstar!
- + Complete bull, proven to be superior in both Maternal & Terminal traits
- + Ozeus daughters make great brood cows, easily kept, docile, average sized cows. They are fertile, have good calving ability, are milky and have excellent udder structure.
- + 5 star across breed on survival i.e. they are keepers!



OZEUS daughter Robert McGuinness
Slane Co. Meath

Star Rating (within breed)	Economic Indexes	Euro value per progeny	Index reliability	Star Rating (across all beef breeds)
★★★★★	REPLACEMENT	€96	91% (Very High)	★★★★★
★★★★★	TERMINAL	€111	97% (Very High)	★★★★★
Star Rating (within breed)	Key profit traits	Index value	Trait reliability	Star Rating (across all beef breeds)
EXPECTED PROGENY PERFORMANCE				
	Calving difficulty (% 3 & 4)	5.8%	99% (Very High)	
★★★★★	Gestation Length	4.03d	99% (Very High)	★★★★★
	Docility (1-5 scale)	-0.06 scale	99% (Very High)	★★★★★
★★★★★	Carcass weight (kg)	25kg	99% (Very High)	★★★★★
★★★★★	Carcass conformation (1-15 scale)	2.1 scale	99% (Very High)	★★★★★
EXPECTED DAUGHTER BREEDING PERFORMANCE				
	Daughter calving difficulty (% 3 & 4)	3.78%	94% (Very High)	
★★★★★	Daughter milk (kg)	1kg	97% (Very High)	★★★★★
★★★★★	Daughter calving interval (days)	1.1 days	76% (High)	★★★★★

Source: ICBF AUGUST '16

GEANT
IDOLE
DIRECTRICE
ULEX
JENNY
HIRONDELLE

NLO NELSON

DOB: 07/12/1997



HERD BOOK NO.: LIMFRAM000897010132

LIMFRAM

PRE-ORDER

GENOMIC INDEX



- + Use to breed powerful milky replacements
- + Daughters are big, long, wide, milky females with excellent calving ability
- + Excellent legs & feet
- + Proven in France & Ireland



Daughter

Star Rating (within breed)	Economic Indexes	Euro value per progeny	Index reliability	Star Rating (across all beef breeds)
★★★★★	REPLACEMENT	€84	79% (High)	★★★★★
★★★★★	TERMINAL	€125	83% (High)	★★★★★
Star Rating (within breed)	Key profit traits	Index value	Trait reliability	Star Rating (across all beef breeds)
EXPECTED PROGENY PERFORMANCE				
	Calving difficulty (% 3 & 4)	6.1%	90% (Very High)	
★★★★★	Gestation Length	2.7d	84% (High)	★★★★★
	Docility (1-5 scale)	-0.07 scale	86% (Very High)	★★★★★
★★★★★	Carcass weight (kg)	28kg	91% (Very High)	★★★★★
★★★★★	Carcass conformation (1-15 scale)	1.73 scale	90% (Very High)	★★★★★
EXPECTED DAUGHTER BREEDING PERFORMANCE				
	Daughter calving difficulty (% 3 & 4)	4.44%	77% (High)	
★★★★★	Daughter milk (kg)	2kg	86% (Very High)	★★★★★
★★★★★	Daughter calving interval (days)	2.9 days	67% (High)	★★★★★

Source: ICBF AUGUST '16

Epatant
Goldies Gigolo
Goldies Alice
Gendarme
Jacinthe
Ebene

Home to 9 of the top 10 most used Beef A.I. Sires in Ireland

LM2321 DOUDOU.TD

DOB: 03/12/2008

HERD BOOK NO.: LIMFRAM002246742213



- + Use to breed great replacements
- + No. 1 Limousin available for milk + 9.1 kgs
- + Daughters are big and powerful with wide pelvic areas
- + Not suitable for use on maiden heifers

LIMOUSIN

PRE-ORDER

GENOMIC INDEX

Star Rating (within breed)	Economic Indexes	Euro value per progeny	Index reliability	Star Rating (across all beef breeds)
★★★★★	REPLACEMENT	€121	42% (Average)	★★★★★
★★★☆☆	TERMINAL	€94	51% (Average)	★★★☆☆
Star Rating (within breed)	Key profit traits	Index value	Trait reliability	Star Rating (across all beef breeds)
EXPECTED PROGENY PERFORMANCE				
	Calving difficulty (% 3 & 4)	3%	63% (Average)	
★★★★★	Gestation Length	2.85d	34% (Low)	★★★☆☆
★★★★★	Docility (1-5 scale)	-0.03 scale	38% (Low)	★★★☆☆
★★★☆☆	Carcass weight (kg)	14kg	58% (Average)	★★★☆☆
★★★☆☆	Carcass conformation (1-15 scale)	1.41 scale	47% (Average)	★★★☆☆
EXPECTED DAUGHTER BREEDING PERFORMANCE				
	Daughter calving difficulty (% 3 & 4)	6.21%	34% (Low)	
★★★★★	Daughter milk (kg)	9kg	49% (Average)	★★★★★
★★★★★	Daughter calving interval (days)	0.7 days	32% (Low)	★★★☆☆

Source: ICBF AUGUST '16



DouDou Daughter

Uron
Amiral
Saga
Micmac MN
Seduite
LIBERATRIC

LM2242 EDAKKYA

DOB: 24/08/2009

HERD BOOK NO.: LIMFRAM002350854301



- + Use to breed replacements without compromising on Terminal traits
- + Daughters are moderately sized easily fleshed cows high in milk, fertility and calving ability
- + Daughters are great breeders

LIMOUSIN

PRE-ORDER

Star Rating (within breed)	Economic Indexes	Euro value per progeny	Index reliability	Star Rating (across all beef breeds)
★★★★★	REPLACEMENT	€83	14% (Very Low)	★★★★★
★★★☆☆	TERMINAL	€92	27% (Very Low)	★★★☆☆
Star Rating (within breed)	Key profit traits	Index value	Trait reliability	Star Rating (across all beef breeds)
EXPECTED PROGENY PERFORMANCE				
	Calving difficulty (% 3 & 4)	5.3%	45% (Average)	
★★★★★	Gestation Length	3.54d	4% (Very Low)	★★★☆☆
★★★★★	Docility (1-5 scale)	-0.07 scale	2% (Very Low)	★★★☆☆
★★★☆☆	Carcass weight (kg)	16kg	35% (Low)	★★★☆☆
★★★☆☆	Carcass conformation (1-15 scale)	1.79 scale	27% (Very Low)	★★★★★
EXPECTED DAUGHTER BREEDING PERFORMANCE				
	Daughter calving difficulty (% 3 & 4)	5.02%	3% (Very Low)	
★★★★★	Daughter milk (kg)	3kg	19% (Very Low)	★★★☆☆
★★★★★	Daughter calving interval (days)	0.5 days	1% (Very Low)	★★★☆☆

Source: ICBF AUGUST '16

RINTINTIN
Alex
Tendresse
Urgel
Barbie
TSARINE

Home to 9 of the top 10 most used Beef A.I. Sires in Ireland



LM2190 DAY

Star Rating (within breed)	Economic Indexes	Euro value per progeny	Index reliability	Star Rating (across all beef breeds)	C.Diff	Reliability
★★★★★	REPLACEMENT	€83	39% (Average)	★★★★★	8.6	65%
★★★★★	TERMINAL	€120	47% (Average)	★★★★★		

GENOMIC INDEX

LM



LM2191 CAMEOS

Star Rating (within breed)	Economic Indexes	Euro value per progeny	Index reliability	Star Rating (across all beef breeds)	C.Diff	Reliability
★★★★★	REPLACEMENT	€77	42% (Average)	★★★★★	5.9	62%
★★★★★	TERMINAL	€128	53% (Average)	★★★★★		

GENOMIC INDEX

LM



LM4058 LODGE HAMLET

Star Rating (within breed)	Economic Indexes	Euro value per progeny	Index reliability	Star Rating (across all beef breeds)	C.Diff	Reliability
★★★★★	REPLACEMENT	€76	43% (Average)	★★★★★	5.8	81%
★★★★★	TERMINAL	€135	54% (Average)	★★★★★		

GENOMIC INDEX

LM



CH2216 FIRST

Star Rating (within breed)	Economic Indexes	Euro value per progeny	Index reliability	Star Rating (across all beef breeds)	C.Diff	Reliability
★★★★★	REPLACEMENT	€101	43% (Average)	★★★★★	4.1	61%
★★★★★	TERMINAL	€154	53% (Average)	★★★★★		

GENOMIC INDEX

CH



CH2215 ARTOIS

Star Rating (within breed)	Economic Indexes	Euro value per progeny	Index reliability	Star Rating (across all beef breeds)	C.Diff	Reliability
★★★★★	REPLACEMENT	€88	47% (Average)	★★★★★	4.1	60%
★★★★★	TERMINAL	€131	56% (Average)	★★★★★		

GENOMIC INDEX

CH



CH2217 CASTOR

Star Rating (within breed)	Economic Indexes	Euro value per progeny	Index reliability	Star Rating (across all beef breeds)	C.Diff	Reliability
★★★★★	REPLACEMENT	€120	49% (Average)	★★★★★	4.1	65%
★★★★★	TERMINAL	€124	58% (Average)	★★★★★		

GENOMIC INDEX

CH



CH2437 BOURGOGNE

Star Rating (within breed)	Economic Indexes	Euro value per progeny	Index reliability	Star Rating (across all beef breeds)	C.Diff	Reliability
★★★★★	REPLACEMENT	€123	30% (Low)	★★★★★	6.6	54%
★★★★★	TERMINAL	€105	41% (Average)	★★★★★		

GENOMIC INDEX

CH



S956 BLEBLACK DIGGER

Star Rating (within breed)	Economic Indexes	Euro value per progeny	Index reliability	Star Rating (across all beef breeds)	C.Diff	Reliability
★★★★★	REPLACEMENT	€155	62% (Average)	★★★★★	5.6	94%
★★★★★	TERMINAL	€150	84% (High)	★★★★★		

GENOMIC INDEX

CH



VMO VOIMO

Star Rating (within breed)	Economic Indexes	Euro value per progeny	Index reliability	Star Rating (across all beef breeds)	C.Diff	Reliability
★★★★★	REPLACEMENT	€158	57% (Average)	★★★★★	5.3	80%
★★★★★	TERMINAL	€144	72% (High)	★★★★★		

GENOMIC INDEX

CH



AA4057 NETHERTON AMERICANO M703

Star Rating (within breed)	Economic Indexes	Euro value per progeny	Index reliability	Star Rating (across all beef breeds)	C.Diff	Reli- ability
★★★★★	REPLACEMENT	€149	44% (Average)	★★★★★	1.4	84%
★★★★★	TERMINAL	€112	57% (Average)	★★★★★		

GENOMIC
INDEX

AA



S2330 COONAMBLE ELEVATOR E11

Star Rating (within breed)	Economic Indexes	Euro value per progeny	Index reliability	Star Rating (across all beef breeds)	C.Diff	Reli- ability
★★★★★	REPLACEMENT	€90	1% (Very Low)	★★★★★	1.4	8%
★★★★★	TERMINAL	€57	2% (Very Low)	★★★★★		

AA



S1206 TE MANIA BERKLEY B1

Star Rating (within breed)	Economic Indexes	Euro value per progeny	Index reliability	Star Rating (across all beef breeds)	C.Diff	Reli- ability
★★★★★	REPLACEMENT	€150	33% (Low)	★★★★★	0.9	70%
★★★★★	TERMINAL	€112	47% (Average)	★★★★★		

AA



ZHF HF REBEL 53Y

Star Rating (within breed)	Economic Indexes	Euro value per progeny	Index reliability	Star Rating (across all beef breeds)	C.Diff	Reli- ability
★★★★★	REPLACEMENT	€121	37% (Low)	★★★★★	2.2	73%
★★★★★	TERMINAL	€94	47% (Average)	★★★★★		

GENOMIC
INDEX

AA



MILLAH MURRAH KLOONEY K42

Star Rating (within breed)	Economic Indexes	Euro value per progeny	Index reliability	Star Rating (across all beef breeds)	C.Diff	Reli- ability
★★★★★	REPLACEMENT		% (xx)	★★★★★		%
★★★★★	TERMINAL		% (xx)	★★★★★		

AA



MILLAH MURRAH KINGDOM K35

Star Rating (within breed)	Economic Indexes	Euro value per progeny	Index reliability	Star Rating (across all beef breeds)	C.Diff	Reli- ability
★★★★★	REPLACEMENT		% (xx)	★★★★★		%
★★★★★	TERMINAL		% (xx)	★★★★★		

AA



SH2202 SPRYS PATENTS ACE G38 (P)

Star Rating (within breed)	Economic Indexes	Euro value per progeny	Index reliability	Star Rating (across all beef breeds)	C.Diff	Reli- ability
★★★★★	REPLACEMENT	€159	48% (Average)	★★★★★	4.2	85%
★★★★★	TERMINAL	€66	69% (High)	★★★★★		

GENOMIC
INDEX

SH



PZT PAINT EARTH RAMA 53U (P)

Star Rating (within breed)	Economic Indexes	Euro value per progeny	Index reliability	Star Rating (across all beef breeds)	C.Diff	Reli- ability
★★★★★	REPLACEMENT	€146	54% (Average)	★★★★★	3.8	83%
★★★★★	TERMINAL	€42	74% (High)	★★★★★		

GENOMIC
INDEX

SH



SH2396 SPRYS EXCLUSIVE J13 (P)

Star Rating (within breed)	Economic Indexes	Euro value per progeny	Index reliability	Star Rating (across all beef breeds)	C.Diff	Reli- ability
★★★★★	REPLACEMENT	€111	30% (Low)	★★★★★	2.3	30%
★★★★★	TERMINAL	€39	30% (Low)	★★★★★		

GENOMIC
INDEX

SH



AYX ANATRIM BODYBUILDER

GENOMIC
INDEX

SI

Star Rating (within breed)	€	Rel%	Star Across
★★★★★	REP	€102	71% (High)
		C.Diff	Reliability
		5.3	94%



PT2201 AIOLI

PT

Star Rating (within breed)	€	Rel%	Star Across
★★★★★	REP	€131	42% (Av.)
		C.Diff	Reliability
		6	71%



SA4059 BEGUIN

GENOMIC
INDEX

SA

Star Rating (within breed)	€	Rel%	Star Across
★★★★★	REP	€236	52% (Av.)
		C.Diff	Reliability
		1.8	72%



PT4032 BOURVIL

PT

Star Rating (within breed)	€	Rel%	Star Across
★★★★★	REP	€124	32% (Low)
		C.Diff	Reliability
		2.8	68%



S592 THEOREME

SA

Star Rating (within breed)	€	Rel%	Star Across
★★★★★	REP	€145	30% (Low)
		C.Diff	Reliability
		2.2	55%



VUL VULAIN

PT

Star Rating (within breed)	€	Rel%	Star Across
★★★★★	REP	€116	73% (High)
		C.Diff	Reliability
		6.9	95%



S1209 BRONSON

SA

Star Rating (within breed)	€	Rel%	Star Across
★★★★★	REP	€106	52% (Av.)
		C.Diff	Reliability
		5.2	86%



S2203 HERITIER

AU

Star Rating (within breed)	€	Rel%	Star Across
★★★★★	REP	€121	38% (Low)
		C.Diff	Reliability
		1.3	64%



S1544 DOUDOU

SA

Star Rating (within breed)	€	Rel%	Star Across
★★★★★	REP	€103	28% (Low)
		C.Diff	Reliability
		3.5	71%



S1273 DUROC

AU

Star Rating (within breed)	€	Rel%	Star Across
★★★★★	REP	€117	35% (Low)
		C.Diff	Reliability
		5.3	67%



S827 VARIEGEOIS

SA

Star Rating (within breed)	€	Rel%	Star Across
★★★★★	REP	€99	58% (Av.)
		C.Diff	Reliability
		3.6	88%



S2204 HEUREUX

AU

Star Rating (within breed)	€	Rel%	Star Across
★★★★★	REP	€114	35% (Low)
		C.Diff	Reliability
		2.4	60%



SA2200 DRUIDE

GENOMIC
INDEX

SA

Star Rating (within breed)	€	Rel%	Star Across
★★★★★	REP	€88	42% (Av.)
		C.Diff	Reliability
		4.9	63%



S580 BAYON 2

AU

Star Rating (within breed)	€	Rel%	Star Across
★★★★★	REP	€103	43% (Av.)
		C.Diff	Reliability
		2	70%

ALSO AVAILABLE

WA2409 Fujisawa



S1477 El Paso



RZI B. Rannai



FTY -Sexed L. Frosty



OGN Gino



LM2065 Casimir 65

Not BDGP qualified



UTL Ultime



VDT B. Vindicator



TVR E. Forever Brill

Not BDGP qualified



VZN Vison



S1052 Emerson



SNZ Sylvaner



TZL Trezegoal



MZT Mozart



REP Repair



MDO Mogador



ICR Icare



TZT Toledo



AFF Attribut



S1523 Langoureaux

Not BDGP qualified



OTHER BREEDS AVAILABLE

Dexter, Galloway, Highland, Irish Moiled, Kerry, Luig, Maine Anjou, Murray Grey, Piedmontese, Romanola, South Devon, Speckled Park and Wagyu.

Semen is available from numerous other beef bulls. Please ask your local breeding adviser or call the head office for availability of these bulls.

Please visit our website -over 130 bulls featured.

Home to 9 of the top 10 most used Beef A.I. Sires in Ireland

Improving fertility performance

ACHIEVING A CALF PER COW EVERY 365 DAYS

PRE BREEDING SEASON

Vaccinations & Dosing

Complete all vaccinations 3 weeks prior to the breeding season.
Ensure appropriate measures are in place to control fluke and worms in cows and heifers.

Maiden Heifers

Weigh your maiden heifers to ensure that they are on target for bodyweight.

Cows

BCS- Correct body condition score is crucial to getting cows cycling and achieving high conception rates. Autumn cows need to be in a BCS of 3-3.25 at breeding, Spring calving cows can be slightly less. Minimise BCS loss from calving to breeding to 0.5. Always separate dry cows and milking cows as first calvers. Thin cows and those with little milk need to be supplemented after calving until they go back incalf, the level of supplementation will depend on the silage quality.

Clean healthy Uterus

High risk cows need to be treated for uterine infections 28 days after calving by your vet. High risk cows are cows that had difficult calvings, retained afterbirth, caesareans and those passing a discharge. Research has shown that Metricure at Day 28 followed by PG 10 days later to be effective. Any cows calved 40 days not detected in heat needs to be examined by your vet.

Getting cows cycling

- ✓ Correct Body Condition Score
- ✓ Easy calvings
- ✓ Treat high risk cows as above
- ✓ Separation of the cow and calf 3 weeks before breeding is an excellent and simple way of getting cows cycling. This can be done easily by having an opening from the creep area out into a paddock and locking out the calves by day initially, and into the creep at night, allowing them to suck twice a day. This will get cows cycling 3 weeks earlier as was demonstrated on the better farms.

BREEDING SEASON ALL ABOUT HEAT DETECTION



A vasectomised bull or some other form of heat detection aid is essential
A vasectomised bull fitted with a chinball harness is the best way to heat detect sucklers; the presence of the bull will induce cows into heat and he will work 24 hours 7 days a week.



SYNCHRONISATION

Synchronisation is an excellent way to increase the number of cows or heifers served with minimum heat detection. However it is not a substitute for poor management. Cows have to be in good body condition and calved at least 40 days

Synchronisation Protocol for AI at Fixed Time

Sun DEC. 1st	DAY 0	PRID or CIDR and GnRH (eg 2.5ml Receptal)	AM
Sun DEC. 8th	DAY 7	PG (eg 5ml Lutalyse or 2ml Estrumate)	AM
Mon DEC. 9th	DAY 8	PRID or CIDR OUT	AM
Tues DEC. 10th	DAY 9	GnRH (eg 2.5ml Receptal)	PM
Weds DEC. 11th	DAY 10	AI all cows	AM –NOON
12th, 13th, 14th DEC watch carefully for late heats			

The second GnRH should be timed 36 hours after PRID or CIDR removal and AI 18 hours after this injection.

PRID, CIDR, GnRH (Receptal, Ovarelin), PG (Lutalyse, Estrumate, Enzaprost, Cyclix) are all POM medicines

Animals with low BCS <2.5 have a better chance of conceiving with AI at observed heat as opposed to fixed timed AI.

Low labour, Cost effective Synchronisation Protocol for cows

Days	Date	Procedure
		Ensure cows are Calved 35 days are Scanned and are in correct BCS
0	Mon 1st Oct. AM	Insert PRID or CIDR Inject with GnRH
7	Mon 7th Oct. AM	Remove PRID/CIDR and inject PG and 400 i.u. eCG
10	Thur 10th Oct. AM	A.I. and inject GnRH

PG Prostaglandin- *Estrumate, *Lutalyse, *Enzaprost. GnRH- *Receptal, *Ovarelin. eCG- *Folligon PMSG, *Synchrostim. (*POM prescription only medicines)

Synchronisation Programme for maiden heifers

30 th November	Day 0	Introduce vasectomised bull 1 week in advance or Apply scratch cards or crayons
1 st to 7 th Dec.	Day 1-7	AI heifers when on heat. Will get 1/3 this week.
7 th or 8 th Dec	Day 7 or 8	Inject PG to all heifers not bred, usually 2/3 of them AI heifers when on heat
9 th -11 th or 10 th to 12 th		Majority will be on heat 48-72 hours post injection. Be extra vigilant at this time.
18 th or 19 th	Day 18 or 19	Reinject PG to those not bred. Should be very few heifers.
20 th -22 nd or 21 st to 23 rd		AI heifers when on heat or 72 and 96 hours post 2 nd PG injection. Watch for all repeats

OUR TEAM

Area Managers.
For breeding advice &
technician service queries.



Ray Hunt
086 8354788
*South Tipperary, East
Clare, North Cork*



Jerome Leen
087 2529895
Kerry, North Cork



Michael Clohessy
086 6054723
Limerick



Joe O'Flynn
086 4030646
*North Cork,
Cork City North*



Eustace Burke
086 0274558
South Cork



Brendan Scully
086 4126727
*East Cork, West
Waterford,*



Declan Keating
086 8164024
West Cork



Enda O'Gorman
086 8352700
West Clare, Galway

Breeding Advisors.



Johnny Carroll
086 2330881
East Waterford



Sonny O'Leary
086 2506418
West Cork



Joe Tobin
086 8125441
*East Cork, West Waterford,
Tipperary*



Tom Tobin
087 2758061
Cork City South



Kevin Dillon
086 2583513
West Cork



Luke Connelly
086 8561975
Galway



Michael Fogarty
086 2738182
Tipperary

Rose Goulding MVB MRCVS MBA
Beef Program Manager
rgoulding@ncbc.ie
086 8396802

twitter

Find us on:
facebook

AI Calls

Dairygold:
1850 500 321

Bandon:
023 - 8832828

Kerry/Clare/Galway:
1890 28 1000