



munster
cattle breeding group



**CONFORMATION & PRODUCTION
SIRES 2017**

Index

| | |
|----|--|
| 1 | Base change & Key to Symbols |
| 2 | FR2256 ABS CRAYON |
| 3 | S3136 BOLDI V ARMOUR |
| 4 | FR2028 (IG) GOLDENFIELD RAPHAEL ET |
| 5 | FR2473 BENNER BARDO |
| 6 | SBS STANTONS BARCODE |
| 7 | FR2235 (IG) BALLAGH PRINCE SPICE |
| 8 | ZSR HOANSTER ZANZIBAR |
| 9 | HZB (IG) BALLYDEHOB PAT 1356 |
| 10 | FR2257 TOPCROFT PESKY TRIX |
| 11 | FR4188 DELTA MAGISTER |
| 12 | FR4091 (IG) EVERGREEN ALADDIN |
| 13 | FR2033 (IG) GOLDENFIELD RASCAL ET |
| 14 | FR4017 (IG) MILEWATER LEON |
| 15 | FR2001 (IG) MONAMORE RHATTIGAN ET |
| 17 | S1233 AMIGHETTI NUMERO UNO TV TL TY |
| 20 | S2211 BUISWEERD MOBILE |
| 21 | FR4187 WESTCOAST PERSEUS |
| 22 | S1137 GEN-I-BEQ LAVAMAN |
| 23 | GXC GK CREAM |
| 24 | FR4107 POPPE RED HOT DARREL RED |
| 25 | YKS STERK KISS KYTEMAN |
| 26 | S2209 TEXEL BEAUTY DEBUTANT |
| 27 | S1488 VAL-BISSON DOORMAN |
| 28 | S2173 VIEUXSAULE FLAME-ET |
| 29 | Jersey Bulls |
| 30 | Heifer Programme |
| 31 | Beef for Dairy |
| 32 | Beef for Dairy |
| 33 | Pregnancy |
| 33 | Herd Health |
| 34 | Milk Recording |
| 34 | AI Tech Service |
| 35 | Heat Detection Aids |
| 35 | MooCall |
| 36 | Immunity Plus |
| 37 | Sexed Semen List |

KEY TO SYMBOLS



High Type Sire



High Kilo Milk Solids



Fertility Improver



Health Improver



Strength Improver



Easy Calving Sire



A2



Robot Ready



Sexed Semen



Will affect pedigree status

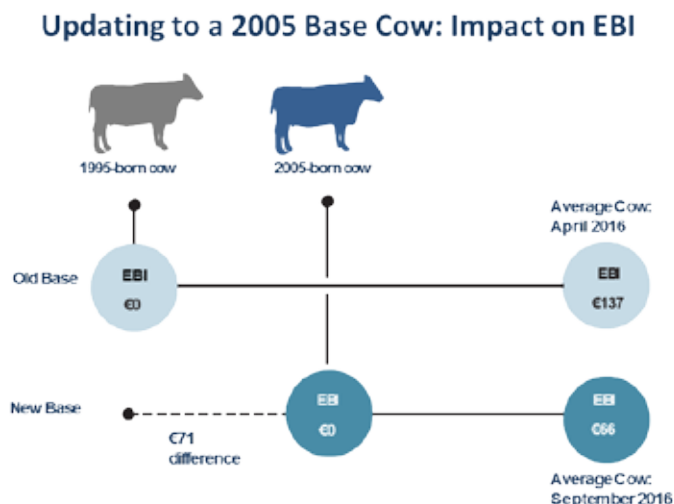
Trait Leaders

| | | | |
|---------------|--------|------------|------|
| Top EBI | YAB | ANDREW | 280 |
| | FR2235 | SPICE | 275 |
| | HZB | PAT | 255 |
| | FR4017 | LEON | 255 |
| | FR2114 | BENNY | 221 |
| Top Prod SI | FR4188 | MAGISTER | 95 |
| | S1137 | LAVAMAN | 90 |
| | YKS | KYTEMAN | 88 |
| | FR4091 | ALADDIN | 88 |
| | FR2001 | RHATTIGAN | 85 |
| Top Fert SI | FR4017 | LEON | 150 |
| | YAB | ANDREW | 150 |
| | FR2235 | SPICE | 141 |
| | HZB | PAT | 132 |
| | FR2114 | BENNY | 120 |
| Top Health SI | S1488 | DOORMAN | 17 |
| | FR4107 | DARREL RED | 14 |
| | FR2256 | CRAYON | 14 |
| | S3136 | ARMOUR | 13 |
| | SBS | BARCODE | 12 |
| Top Milk Kg | FR4091 | ALADDIN | 495 |
| | FR4188 | MAGISTER | 469 |
| | S3136 | ARMOUR | 432 |
| | FR2473 | BARDO | 427 |
| | YKS | KYTEMAN | 423 |
| Top Prot Kg | FR4188 | MAGISTER | 17.5 |
| | FR4091 | ALADDIN | 16.9 |
| | FR2001 | RHATTIGAN | 15.9 |
| | YKS | KYTEMAN | 15.6 |
| | S1137 | LAVAMAN | 15.5 |
| Top Prot % | FR2235 | SPICE | 0.16 |
| | FR4017 | LEON | 0.10 |
| | HZB | PAT | 0.09 |
| | S1137 | LAVAMAN | 0.08 |
| | YAB | ANDREW | 0.08 |
| Top Type | FR2473 | BARDO | 4.2 |
| | FR4188 | MAGISTER | 3.9 |
| | S1488 | DOORMAN | 3.8 |
| | FR4091 | ALADDIN | 3.6 |
| | FR2270 | ADMIRATION | 3.5 |
| Top Udder | FR4091 | ALADDIN | 3.6 |
| | FR2473 | BARDO | 3.2 |
| | S1488 | DOORMAN | 3.2 |
| | GXC | GK CREAM | 3.1 |
| | FR4188 | MAGISTER | 3.1 |
| Top F&L | FR2473 | BARDO | 4.3 |
| | FR4188 | MAGISTER | 3.9 |
| | FR4091 | ALADDIN | 3.7 |
| | FR2270 | ADMIRATION | 3.6 |
| | S1488 | DOORMAN | 3.4 |

Every endeavor was made to ensure the information included in this catalogue was correct and up-to-date at time of printing. Munster Cattle Breeding Group cannot be held responsible for any errors of fact or omission

ICBF Update the Base Cow used in the EBI

The base cow is the genetic reference point for how all dairy cattle in Ireland are assessed – it was updated last September, moving from a 1995 to a 2005-born base cow. The base cow update reflects improvements made in dairy genetics.



The impact in terms of the genetic component is summarised in Table 1. In addition more data was included for animals in that evaluation, the exact change in EBI will also depend on what new data is added for the individual animal.

Table 1

A base change should not influence a farmer's decision-making process when it comes to breeding. As always, this process should be:

- Identify the trait(s) which you want to improve in your own herd;

- Use your HerdPlus EBI report to identify the genetic indexes of the trait(s) you wish to improve;

Select a team of bulls that are on average better than the genetic index for the trait(s) you wish to improve.

Provided you are selecting bulls with a figure that is better than the herd index, progress will be made for that trait.

Table 1

| | Milk Sub-Index | | | | | Fertility Sub-Index | |
|-------------------------------|----------------|--------|------------|---------|-----------|---------------------|----------|
| | Yield | Fat Kg | Protein Kg | Fat % | Protein % | Calv. Int. | Survival |
| Change in PTA | -116 kg | -4.9 | -6.0 | -01/.02 | -0.03/.04 | +2.8 days | -0.65% |
| Value of Sub-Index Change (€) | -€29 | | | | | -€42 | |
| Total Value of EBI Change (€) | -€71 | | | | | | |



What does the New Base Cow produce?

Table 2:

| | Base for Production (305 days) | | | Base for Fertility | |
|---|--------------------------------|-------------|-------------|--------------------|----------|
| 1st Lact. | Milk Yield | Fat/Prot Kg | Fat/Prot % | Calv. Int | Survival |
| Old Base | 5192 | 196kg/171kg | 3.79%/3.30% | 404 days | 80% |
| New Base | 5743 | 224kg/195kg | 3.90%/3.39% | 400 days | 82.5% |
| *305 figures - National Average currently at 252 days | | | | | |

FR2256 ABS CRAYON

DOB: 30/04/2014

HB No. HOLDEUM000538481754



| EBI DEC. 2016 | | REL | 10% | 20% | 30% | 40% | MEAN | 40% | 30% | 20% | 10% |
|---------------|-----|-----|-----|-----|-----|-----|------|-----|-----|-----|-----|
| EBI | 160 | 51% | | | | | | | | | |
| Prod. SI | 79 | 68% | | | | | | | | | |
| Fert. SI | 34 | 54% | | | | | | | | | |
| Calv. SI | 35 | 55% | | | | | | | | | |
| Beef. SI | -6 | 15% | | | | | | | | | |
| Maint. SI | 0 | 13% | | | | | | | | | |
| Mgmt. SI | 3 | 7% | | | | | | | | | |
| Health SI | 14 | 50% | | | | | | | | | |

PRODUCTION

| | | | | | |
|---------|--------|------------|----------|-------|--------|
| Milk Kg | Fat Kg | Protein KG | Solid Kg | Fat % | Prot % |
| 338 | 15.1 | 14.2 | 29 | 0.03 | 0.05 |

FERTILITY

| | |
|------------------|----------|
| Calving Interval | Survival |
| -0.4 | 2.5 |

CALVING DIFFICULTY

| | | |
|---------|------------|-------------|
| Records | Difficulty | Reliability |
| 10 | 2.6 | 50 |

MANAGEMENT

| | | | | |
|------------|------|-------|-----|-----------|
| Milk Speed | Temp | SCC | BCS | aAa Score |
| -2.7 | 0.06 | -0.19 | 0 | 243 |

- Production with type and positive components
- Health Improver +14
- World class pedigree

LINEAR EVALUATION - INTERBULL 2016

| | | -2 | +2 |
|----------------|------|----|----|
| STATURE | 1.3 | | |
| CHEST WIDTH | 0.1 | | |
| BODY DEPTH | 1 | | |
| ANGULARITY | 1 | | |
| RUMP ANGLE | -0.5 | | |
| RUMP WIDTH | 1.5 | | |
| REAR LEG SET | -0.3 | | |
| LOCOMOTION | 2.8 | | |
| FOOT ANGLE | 1.5 | | |
| FORE UDDER | 4 | | |
| REAR UDDER | 3 | | |
| UDDER SUPPORT | 1.3 | | |
| UDDER DEPTH | 2.7 | | |
| TEAT PLACEMENT | 0.8 | | |
| TEAT LENGTH | -1.4 | | |
| OVERALL TYPE | 2.8 | | |
| OVERALL UDDER | 3.1 | | |
| OVERALL F&L | 2.6 | | |

SIRE: DE-SU 11236 BALISTO

MS: RMW ARMITAGE

MGS: RAMOS

DAM: LARCREST CRAVE V685

MD: LARCREST CRIMSON EX93

MGD: LARCREST COSMOPOLITAN EX

PRE-ORDER

GENOMIC

S3136 BOLDI V ARMOUR

DOB: 20/01/2014

HB No. HOLCANM000108798853



| EBI DEC. 2016 | REL | 10% | BOTTOM 20% | 30% | 40% | MEAN | 40% | 30% | TOP 20% | 10% |
|---------------------|-----|-----|------------|-----|-----|------|-----|-----|---------|-----|
| EBI 195 | 49% | | | | | | | | | |
| Prod. SI 81 | 71% | | | | | | | | | |
| Fert. SI 76 | 59% | | | | | | | | | |
| Calv. SI 33 | 18% | | | | | | | | | |
| Beef. SI -1 | 8% | | | | | | | | | |
| Maint. SI -8 | 6% | | | | | | | | | |
| Mgmt. SI 2 | 6% | | | | | | | | | |
| Health SI 13 | 52% | | | | | | | | | |

PRODUCTION

| Milk Kg | Fat Kg | Protein KG | Solid Kg | Fat % | Prot % |
|------------|-------------|-------------|-----------|-------------|-------------|
| 432 | 19.6 | 14.9 | 34 | 0.04 | 0.01 |

FERTILITY

| Calving Interval | Survival |
|------------------|------------|
| -3.9 | 2.4 |

CALVING DIFFICULTY

| Records | Difficulty | Reliability |
|---------|------------|-------------|
| | 2.8 | 23 |

MANAGEMENT

| Milk Speed | Temp | SCC | BCS | aAa Score |
|-------------|----------|--------------|------------|---------------|
| -9.6 | 0 | -0.18 | 0.1 | 345126 |

- High production, high index outcross sire
- Super Type
- Great cow family

LINEAR EVALUATION - INTERBULL 2016

| | | -2 | +2 |
|----------------|------|----|----|
| STATURE | 2.3 | | |
| CHEST WIDTH | -0.4 | | |
| BODY DEPTH | 0.2 | | |
| ANGULARITY | 1.1 | | |
| RUMP ANGLE | 0.8 | | |
| RUMP WIDTH | 1.9 | | |
| REAR LEG SET | -1.4 | | |
| LOCOMOTION | 2.1 | | |
| FOOT ANGLE | 1.8 | | |
| FORE UDDER | 1.9 | | |
| REAR UDDER | 2.5 | | |
| UDDER SUPPORT | 2.8 | | |
| UDDER DEPTH | 2.5 | | |
| TEAT PLACEMENT | 1.4 | | |
| TEAT LENGTH | 0.7 | | |
| OVERALL TYPE | 2.7 | | |
| OVERALL UDDER | 2.3 | | |
| OVERALL F&L | 2.7 | | |

SIRE: COYNE-FARMS JABIR-ET

MS: MISTY SPRINGS SUPERSONIC

MGS: LONG-LANGS OMAN OMAN TV TL TY

DAM: VELTHUIS SUPERSONIC ALYSSA V687

MD: VELTHUIS SG MOM ALESIA V687

MGD: ALLYNDAL-1 GOLDWYN ALBANY V687

FR2028 (IG) GOLDENFIELD RAPHAEL ET

DOB: 14/11/2013

HB No. H0LIRLM211110622365



Dam

Bred by: John & Padraic Murphy. Kilmanagh, Co Kilkenny



| EBI DEC. 2016 | REL | 10% | BOTTOM 20% | 30% | 40% | MEAN | 40% | 30% | TOP 20% | 10% |
|----------------------|-----|-----|------------|-----|-----|------|-----|-----|---------|-----|
| EBI 194 | 61% | | | | | | | | | |
| Prod. SI 80 | 69% | | | | | | | | | |
| Fert. SI 64 | 57% | | | | | | | | | |
| Calv. SI 51 | 89% | | | | | | | | | |
| Beef. SI -3 | 48% | | | | | | | | | |
| Maint. SI -10 | 42% | | | | | | | | | |
| Mgmt. SI 1 | 22% | | | | | | | | | |
| Health SI 9 | 53% | | | | | | | | | |

PRODUCTION

| Milk Kg | Fat Kg | Protein KG | Solid Kg | Fat % | Prot % |
|------------|-------------|-------------|-----------|-------------|-------------|
| 383 | 15.9 | 14.8 | 31 | 0.01 | 0.03 |

FERTILITY

| Calving Interval | Survival |
|------------------|------------|
| -1.6 | 3.7 |

CALVING DIFFICULTY

| Records | Difficulty | Reliability |
|-------------|------------|-------------|
| 1482 | 1.7 | 97 |

MANAGEMENT

| Milk Speed | Temp | SCC | BCS |
|--------------|--------------|--------------|------------|
| -12.4 | -0.05 | -0.17 | 0.3 |

- The complete Package
- One of the highest Index, Type and easy calving bulls available
- 31Kgs milk solids & positive +.03% protein

LINEAR EVALUATION - INTERBULL 2016

| | | -2 | +2 |
|----------------|------|----|----|
| STATURE | 1.9 | | |
| CHEST WIDTH | 0.5 | | |
| BODY DEPTH | 1 | | |
| ANGULARITY | 0.9 | | |
| RUMP ANGLE | -0.9 | | |
| RUMP WIDTH | 2.7 | | |
| REAR LEG SET | -0.2 | | |
| LOCOMOTION | 1.3 | | |
| FOOT ANGLE | -0.5 | | |
| FORE UDDER | 2.6 | | |
| REAR UDDER | 1.9 | | |
| UDDER SUPPORT | 2.2 | | |
| UDDER DEPTH | 2.3 | | |
| TEAT PLACEMENT | 1.2 | | |
| TEAT LENGTH | -0.8 | | |
| OVERALL TYPE | 1.9 | | |
| OVERALL UDDER | 2.2 | | |
| OVERALL F&L | 2.1 | | |

SIRE: CO-OP BOSSIDE MASSEY-ET

MS: BRAEDALE GOLDWYN

MGS: O-BEE MANFRED JUSTICE ET TV TL

DAM: GOLDENFIELD GOLD RAVEN EX91

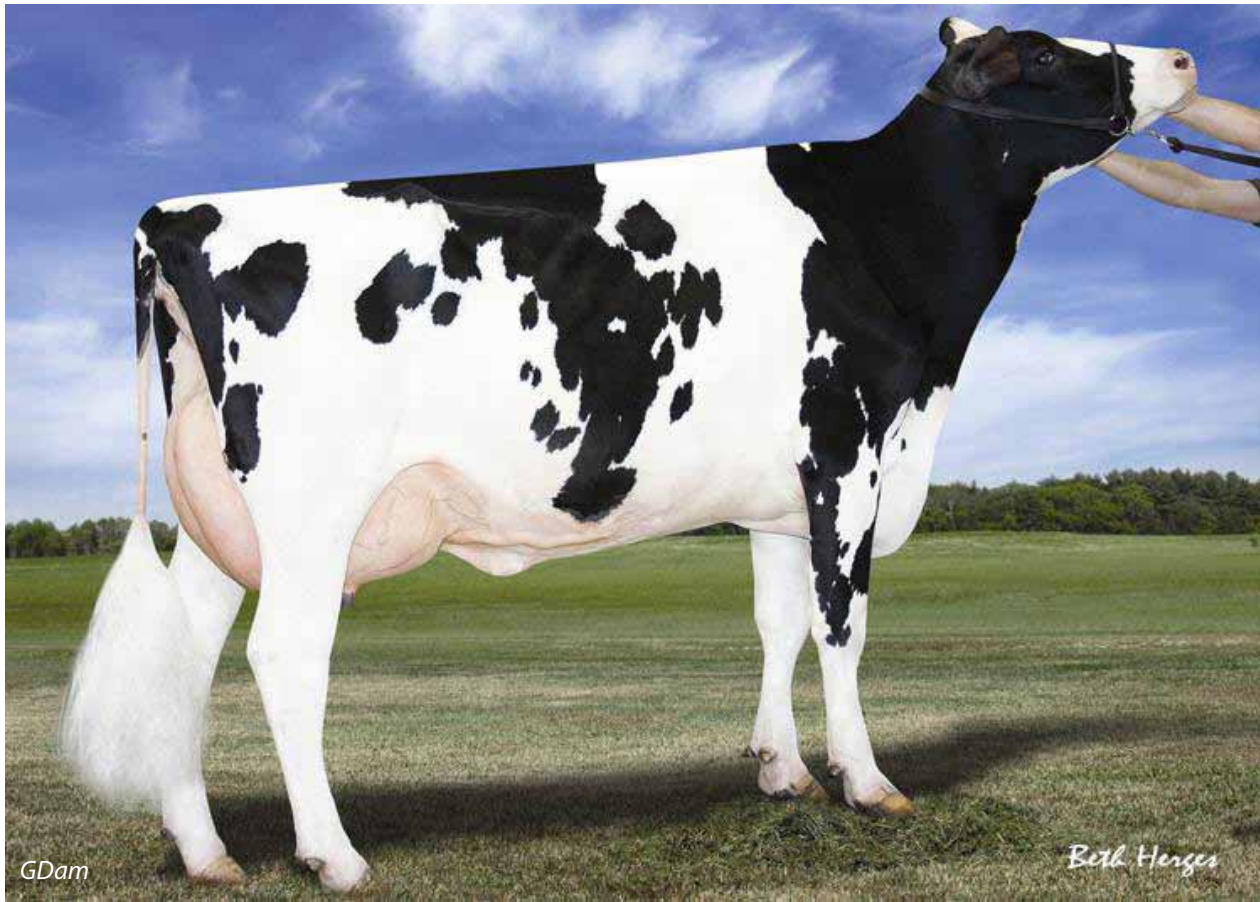
MD: MONAMORE OMAN RAVEN ET EX90

MGD: MONAMORE DURHAM RAVEN EX93 2E

FR2473 BENNER BARDO

DOB: 13/04/2014

HB No. HOLCANM000011951553



| EBI DEC. 2016 | | REL | 10% | BOTTOM | 20% | 30% | 40% | MEAN | 40% | 30% | TOP | 20% | 10% |
|---------------|-----|-----|-----|--------|-----|-----|-----|------|-----|-----|-----|-----|-----|
| EBI | 120 | 51% | | | | | | | | | | | |
| Prod. SI | 82 | 65% | | | | | | | | | | | |
| Fert. SI | 14 | 51% | | | | | | | | | | | |
| Calv. SI | 31 | 50% | | | | | | | | | | | |
| Beef. SI | -1 | 35% | | | | | | | | | | | |
| Maint. SI | -17 | 34% | | | | | | | | | | | |
| Mgmt. SI | 4 | 6% | | | | | | | | | | | |
| Health SI | 7 | 47% | | | | | | | | | | | |

PRODUCTION

| | | | | | |
|---------|--------|------------|----------|-------|--------|
| Milk Kg | Fat Kg | Protein KG | Solid Kg | Fat % | Prot % |
| 427 | 23.9 | 14.4 | 38 | 0.11 | 0.00 |

FERTILITY

| | |
|------------------|----------|
| Calving Interval | Survival |
| 1.3 | 2.5 |

CALVING DIFFICULTY

Records Difficulty Reliability

NO CALVING SURVEY

MANAGEMENT

| | | | | |
|------------|------|-------|------|-----------|
| Milk Speed | Temp | SCC | BCS | aAa Score |
| -2.4 | 0.1 | -0.06 | -1.7 | 324156 |

- Outstanding production sire +400 kgs milk & 38 kgs solids
- 4.2 points for Type
- Flame x Mogul

LINEAR EVALUATION - INTERBULL 2016

| | | -2 | +2 |
|----------------|------|----|----|
| STATURE | 2.8 | | |
| CHEST WIDTH | -0.5 | | |
| BODY DEPTH | 1.7 | | |
| ANGULARITY | 2.7 | | |
| RUMP ANGLE | 0.4 | | |
| RUMP WIDTH | 2.8 | | |
| REAR LEG SET | -0.9 | | |
| LOCOMOTION | 3.3 | | |
| FOOT ANGLE | 2.2 | | |
| FORE UDDER | 3.3 | | |
| REAR UDDER | 4.6 | | |
| UDDER SUPPORT | 3.5 | | |
| UDDER DEPTH | 2.6 | | |
| TEAT PLACEMENT | 2 | | |
| TEAT LENGTH | -0.6 | | |
| OVERALL TYPE | 4.2 | | |
| OVERALL UDDER | 3.2 | | |
| OVERALL F&L | 4.3 | | |

SIRE: VIEUXSAULE FLAME-ET

MS: MOUNTFIELD SSI DCY MOGUL-ET

MGS: EMERALD-ACR-SA BAXTER TL TV TY

DAM: BENNER MOGUL BOBBY SUE V686

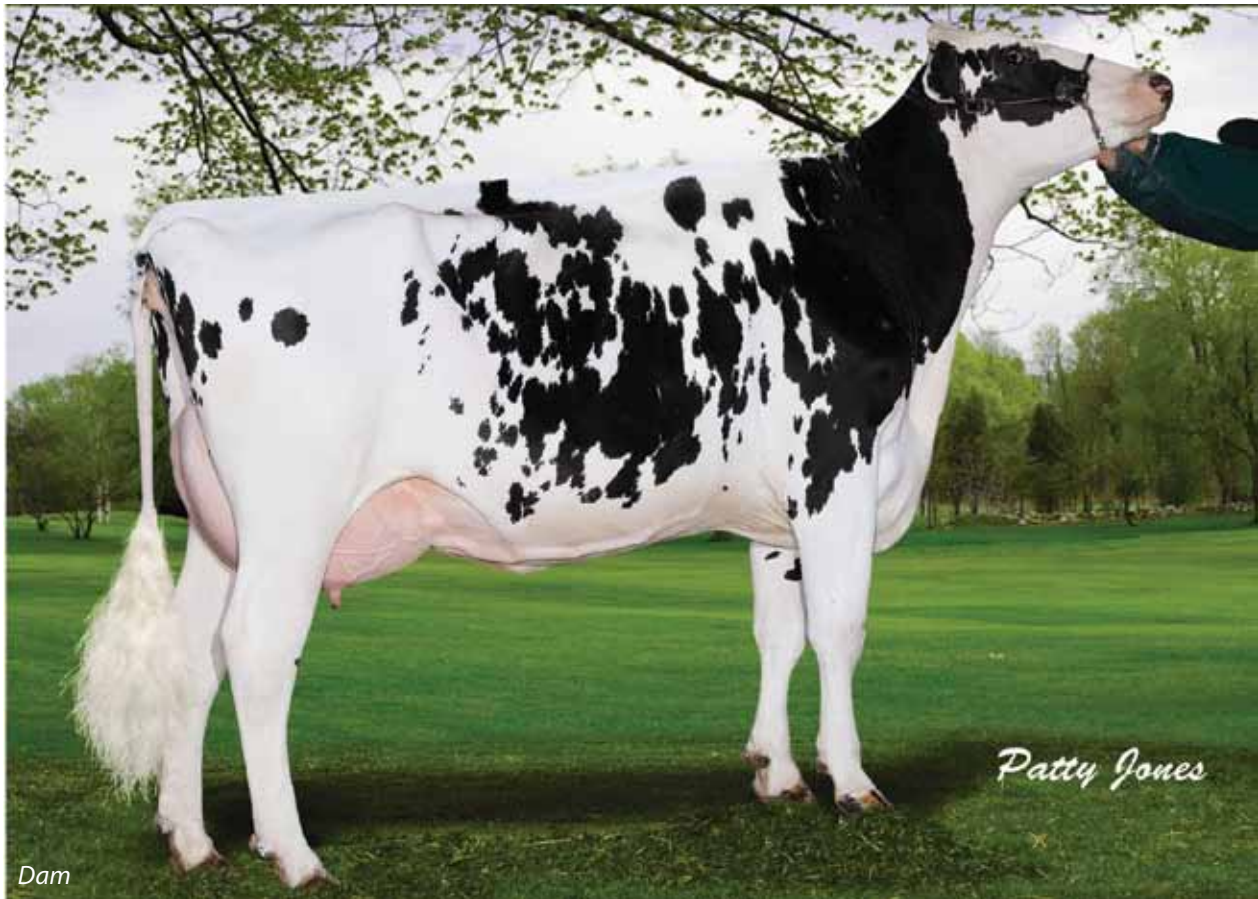
MD: MAPEL WOOD BAXTER BETHANY V685

MGD: GEN-I-BEQ SHOTTLE BOMBI EX94

SBS STANTONS BARCODE

DOB: 04/03/2010

HB No. HOLCANM000009767323



Dam



| EBI DEC. 2016 | REL | 10% | BOTTOM 20% | 30% | 40% | MEAN | 40% | 30% | TOP 20% | 10% |
|---------------------|-----|-----|------------|-----|-----|------|-----|-----|---------|-----|
| EBI 182 | 79% | | | | | | | | | |
| Prod. SI 73 | 87% | | | | | | | | | |
| Fert. SI 57 | 78% | | | | | | | | | |
| Calv. SI 45 | 87% | | | | | | | | | |
| Beef. SI -7 | 82% | | | | | | | | | |
| Maint. SI -2 | 60% | | | | | | | | | |
| Mgmt. SI 4 | 45% | | | | | | | | | |
| Health SI 12 | 66% | | | | | | | | | |

PRODUCTION

| Milk Kg | Fat Kg | Protein KG | Solid Kg | Fat % | Prot % |
|------------|-------------|-------------|-----------|-------------|-------------|
| 266 | 13.3 | 12.5 | 26 | 0.05 | 0.06 |

FERTILITY

| Calving Interval | Survival |
|------------------|------------|
| -2 | 2.7 |

CALVING DIFFICULTY

| Records | Difficulty | Reliability |
|------------|------------|-------------|
| 297 | 3.5 | 90 |

MANAGEMENT

| Milk Speed | Temp | SCC | BCS | aAa Score |
|------------|-------------|--------------|-------------|---------------|
| 1.8 | 0.13 | -0.15 | -0.8 | 231456 |

- Brilliant Dtr Proof in Ireland
- Excellent all-round sire
- Production, Type, Index and Components
- Immunity+ Sire

LINEAR EVALUATION - INTERBULL 2016

| | | -2 | +2 |
|----------------|------|----|----|
| STATURE | 1.3 | | |
| CHEST WIDTH | -1.7 | | |
| BODY DEPTH | -0.2 | | |
| ANGULARITY | 1.5 | | |
| RUMP ANGLE | 1.5 | | |
| RUMP WIDTH | 1.4 | | |
| REAR LEG SET | -1.1 | | |
| LOCOMOTION | 0.8 | | |
| FOOT ANGLE | 0.7 | | |
| FORE UDDER | 1.9 | | |
| REAR UDDER | 2.7 | | |
| UDDER SUPPORT | 2.3 | | |
| UDDER DEPTH | 2 | | |
| TEAT PLACEMENT | 1.8 | | |
| TEAT LENGTH | -1 | | |
| OVERALL TYPE | 2 | | |
| OVERALL UDDER | 2.1 | | |
| OVERALL F&L | 0.7 | | |

SIRE: LONG-LANGS OMAN OMAN TV TL TY

MS: PICSTON SHUTTLE

MGS: STARTMORE RUDOLPH ET

DAM: MTN-VIEW-S PT BUBBLE VG89

MD: MAYERLANE RUD BUBBLE VG88

MGD: PLACKES-SVF LUKE BETSY EX94

FR2235 (IG) BALLAGH PRINCE SPICE

DOB: 29/01/2015

HB No. HOLIRLM371268281070



Bred by: Patrick Redmond, Enniscorthy Co Wexford



| EBI DEC. 2016 | | REL | 10% | BOTTOM 20% | 30% | 40% | MEAN | 40% | 30% | TOP 20% | 10% |
|---------------|------------|-----|-----|------------|-----|-----|------|-----|-----|---------|-----|
| EBI | 275 | 58% | | | | | | | | | |
| Prod. SI | 83 | 70% | | | | | | | | | |
| Fert. SI | 141 | 55% | | | | | | | | | |
| Calv. SI | 54 | 66% | | | | | | | | | |
| Beef. SI | -15 | 46% | | | | | | | | | |
| Maint. SI | 10 | 42% | | | | | | | | | |
| Mgmt. SI | -2 | 28% | | | | | | | | | |
| Health SI | 4 | 52% | | | | | | | | | |

PRODUCTION

| | | | | | |
|-----------|-----------|-------------|-----------|-------------|-------------|
| Milk Kg | Fat Kg | Protein KG | Solid Kg | Fat % | Prot % |
| 85 | 10 | 12.1 | 22 | 0.11 | 0.16 |

FERTILITY

| | |
|------------------|------------|
| Calving Interval | Survival |
| -7.2 | 4.4 |

CALVING DIFFICULTY

| | | |
|-----------|------------|-------------|
| Records | Difficulty | Reliability |
| 17 | 1.6 | 59 |

MANAGEMENT

| | | | | |
|------------|--------------|--------------|------------|---------------|
| Milk Speed | Temp | SCC | BCS | aAa Score |
| 6.1 | -0.02 | -0.06 | 1.3 | 345126 |

- Great balance of Index and sound type
- Fertility improver
- Possible easy calving sire

LINEAR EVALUATION - INTERBULL 2016

| | | -2 | +2 |
|----------------|------|----|----|
| STATURE | -1.4 | | |
| CHEST WIDTH | 0.1 | | |
| BODY DEPTH | -2.2 | | |
| ANGULARITY | -1.9 | | |
| RUMP ANGLE | 3 | | |
| RUMP WIDTH | -0.5 | | |
| REAR LEG SET | -2.3 | | |
| LOCOMOTION | 1.5 | | |
| FOOT ANGLE | 0.9 | | |
| FORE UDDER | -0.2 | | |
| REAR UDDER | -0.3 | | |
| UDDER SUPPORT | -0.6 | | |
| UDDER DEPTH | -0.3 | | |
| TEAT PLACEMENT | -0.6 | | |
| TEAT LENGTH | 1.8 | | |
| OVERALL TYPE | 0.3 | | |
| OVERALL UDDER | -0.2 | | |
| OVERALL F&L | 0.6 | | |

SIRE: (IG) LISSANE PIRATE

MS: LISDUFF MANFRED ET

MGS: NEWHOUSE SJOERD

DAM: BALLAGH NHS LDU SPICE

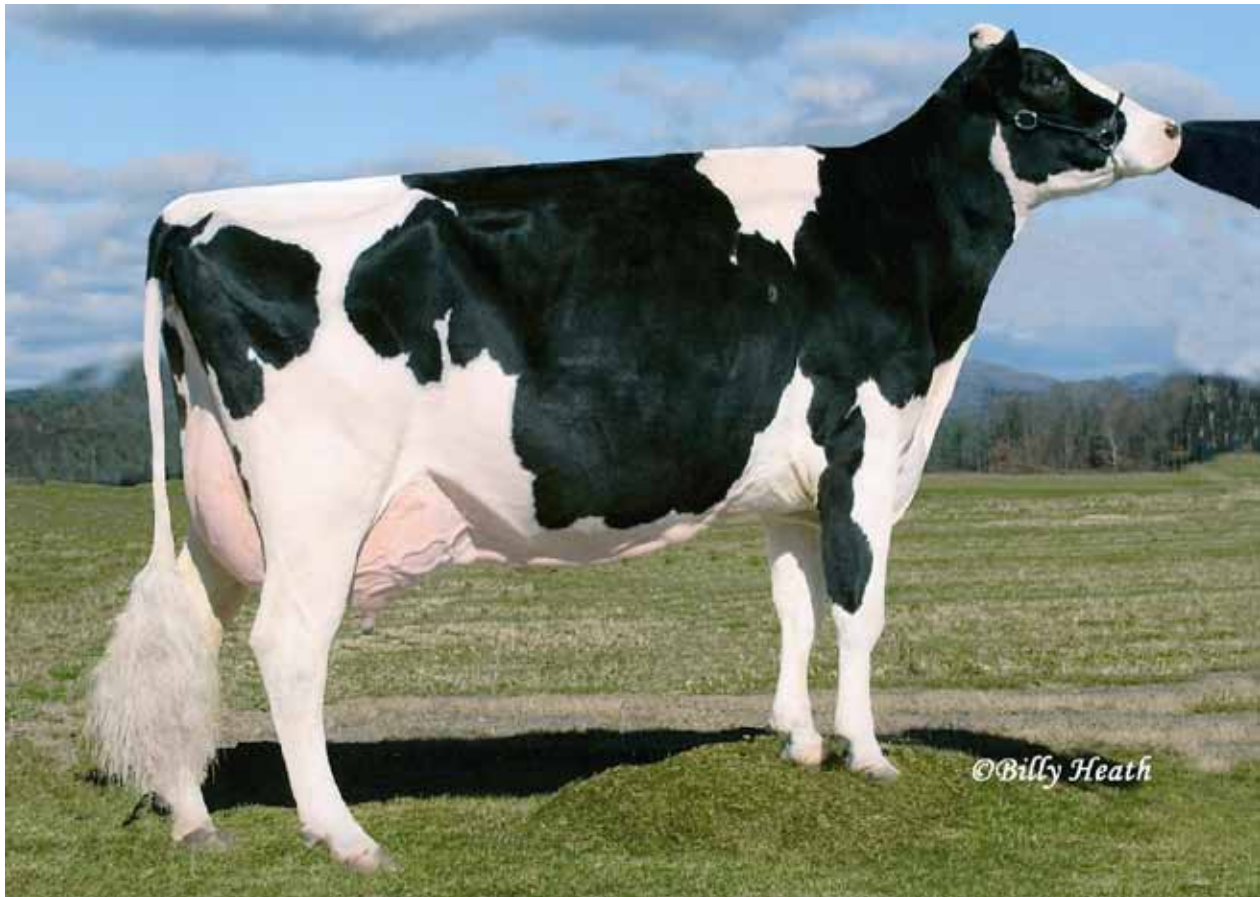
MD: BALLAGH NHS SPICE 2

MGD: BALLAGH JKB SPICE

ZSR HOANSTER ZANZIBAR

DOB: 01/12/2012

HB No. HOLNLD000940138917



| EBI DEC. 2016 | | REL | 10% | 20% | 30% | 40% | MEAN | 40% | 30% | 20% | 10% |
|---------------|------------|-----|-----|-----|-----|-----|------|-----|-----|-----|-----|
| EBI | 192 | 57% | | | | | | | | | |
| Prod. SI | 52 | 67% | | | | | | | | | |
| Fert. SI | 104 | 57% | | | | | | | | | |
| Calv. SI | 38 | 81% | | | | | | | | | |
| Beef. SI | 4 | 37% | | | | | | | | | |
| Maint. SI | -18 | 35% | | | | | | | | | |
| Mgmt. SI | 3 | 9% | | | | | | | | | |
| Health SI | 9 | 51% | | | | | | | | | |

PRODUCTION

| | | | | | |
|------------|-------------|-------------|-----------|--------------|-------------|
| Milk Kg | Fat Kg | Protein KG | Solid Kg | Fat % | Prot % |
| 298 | 11.2 | 10.2 | 21 | -0.01 | 0.00 |

FERTILITY

| | |
|------------------|------------|
| Calving Interval | Survival |
| -5.4 | 3.1 |

CALVING DIFFICULTY

| | | |
|------------|------------|-------------|
| Records | Difficulty | Reliability |
| 334 | 3.5 | 91 |

MANAGEMENT

| | | | | |
|-------------|-------------|--------------|------------|---------------|
| Milk Speed | Temp | SCC | BCS | aAa Score |
| -0.7 | 0.08 | -0.13 | 0.7 | 432156 |

- Great balance of Index & Type
- Super reports from Farmers on Zanzibar progeny in Ireland
- Immunity+ Sire

LINEAR EVALUATION - INTERBULL 2016

| | | -2 | +2 |
|----------------|------|----|----|
| STATURE | 1.5 | | |
| CHEST WIDTH | -0.6 | | |
| BODY DEPTH | -1 | | |
| ANGULARITY | 0.3 | | |
| RUMP ANGLE | 0.6 | | |
| RUMP WIDTH | 0.5 | | |
| REAR LEG SET | -1.7 | | |
| LOCOMOTION | 2.7 | | |
| FOOT ANGLE | 2.3 | | |
| FORE UDDER | 1.9 | | |
| REAR UDDER | 1.8 | | |
| UDDER SUPPORT | 1.6 | | |
| UDDER DEPTH | 2.8 | | |
| TEAT PLACEMENT | 1.4 | | |
| TEAT LENGTH | -0.4 | | |
| OVERALL TYPE | 2.4 | | |
| OVERALL UDDER | 1.7 | | |
| OVERALL F&L | 2.5 | | |

SIRE: RMW ARMITAGE

MS: LAESCHWAY JET BOWSER-ET

MGS: PICSTON SHOTTLE

DAM: FURNACE-HILL BOWSR ZIA VG85

MD: LYNNCREST SHOTTLE ZABOO EX90

MGD: WINDSOR-MANOR ZEBEE EX91

HZB (IG) BALLYDEHOB PAT 1356

DOB: 18/01/2013

HB No. H0LIRLM141163881356



GGO Sister

Bred by: Robert Shannon. Ballydehob, Co Cork



| EBI DEC. 2016 | | REL | 10% | BOTTOM 20% | 30% | 40% | MEAN | 40% | 30% | TOP 20% | 10% |
|---------------|------------|-----|-----|------------|-----|-----|------|-----|-----|---------|-----|
| EBI | 255 | 67% | | | | | | | | | |
| Prod. SI | 67 | 72% | | | | | | | | | |
| Fert. SI | 132 | 62% | | | | | | | | | |
| Calv. SI | 41 | 92% | | | | | | | | | |
| Beef. SI | 0 | 74% | | | | | | | | | |
| Maint. SI | 2 | 56% | | | | | | | | | |
| Mgmt. SI | 10 | 34% | | | | | | | | | |
| Health SI | 4 | 57% | | | | | | | | | |

PRODUCTION

| | | | | | |
|------------|-------------|------------|-----------|-------------|-------------|
| Milk Kg | Fat Kg | Protein KG | Solid Kg | Fat % | Prot % |
| 142 | 13.8 | 9.8 | 24 | 0.13 | 0.09 |

FERTILITY

| | |
|------------------|------------|
| Calving Interval | Survival |
| -6 | 4.9 |

CALVING DIFFICULTY

| | | |
|--------------|------------|-------------|
| Records | Difficulty | Reliability |
| 15072 | 2.4 | 99 |

MANAGEMENT

| | | | | |
|-------------|-------------|--------------|------------|---------------|
| Milk Speed | Temp | SCC | BCS | aAa Score |
| -8.9 | 0.23 | -0.02 | 1.5 | 435126 |

- Balance of Index, Production and good Type
- Fertility and components improver
- Great cow family

LINEAR EVALUATION - INTERBULL 2016

| | | -2 | +2 |
|----------------|------|----|----|
| STATURE | -0.3 | | |
| CHEST WIDTH | 0.9 | | |
| BODY DEPTH | -0.7 | | |
| ANGULARITY | -0.9 | | |
| RUMP ANGLE | 0.8 | | |
| RUMP WIDTH | 0.6 | | |
| REAR LEG SET | 0 | | |
| LOCOMOTION | -1.2 | | |
| FOOT ANGLE | -0.1 | | |
| FORE UDDER | 0 | | |
| REAR UDDER | 0.2 | | |
| UDDER SUPPORT | -0.6 | | |
| UDDER DEPTH | 1.3 | | |
| TEAT PLACEMENT | -1.2 | | |
| TEAT LENGTH | -2.1 | | |
| OVERALL TYPE | 0 | | |
| OVERALL UDDER | -0.2 | | |
| OVERALL F&L | 0 | | |

SIRE: PARKDUV MARK

MS: 0-BEE MANFRED JUSTICE ET TV TL

MGS: GALTEE MERCI ET

DAM: BALLYDEHOB OMAN PATSY 2 EX92

MD: BALLYDEHOB GMI PATSY EX90

MGD: KNOCKSMILL LANGS PATSY EX90

FR2257 TOPCROFT PESKY TRIX

DOB: 07-MAY-2014

HB No. HOLGBRM221337302215



| EBI DEC. 2016 | | REL | 10% | BOTTOM 20% | 30% | 40% | MEAN | 40% | 30% | TOP 20% | 10% |
|---------------|-----|-----|-----|------------|-----|-----|------|-----|-----|---------|-----|
| EBI | 153 | 56% | | | | | | | | | |
| Prod. SI | 54 | 72% | | | | | | | | | |
| Fert. SI | 58 | 58% | | | | | | | | | |
| Calv. SI | 40 | 45% | | | | | | | | | |
| Beef. SI | 4 | 40% | | | | | | | | | |
| Maint. SI | -15 | 36% | | | | | | | | | |
| Mgmt. SI | 2 | 9% | | | | | | | | | |
| Health SI | 9 | 53% | | | | | | | | | |

PRODUCTION

| Milk Kg | Fat Kg | Protein KG | Solid Kg | Fat % | Prot % |
|---------|--------|------------|----------|-------|--------|
| 301 | 17.0 | 10.0 | 37 | 0.08 | -0.01 |

FERTILITY

| Calving Interval | Survival |
|------------------|----------|
| -2.36 | 2.39 |

CALVING DIFFICULTY

Records Difficulty Reliability

NO CALVING SURVEY

MANAGEMENT

| Milk Speed | Temp | SCC | BCS | aAa Score |
|------------|------|-------|-----|-----------|
| -8.44 | 0.00 | -0.12 | -- | 234 |

- Production & high type sire
- 37kgs Milk Solids
- Use to improve udders, feet & legs

LINEAR EVALUATION - INTERBULL 2016

| | | -2 | +2 |
|----------------|------|----|----|
| STATURE | 1.0 | | |
| CHEST WIDTH | -0.9 | | |
| BODY DEPTH | -0.4 | | |
| ANGULARITY | 1.2 | | |
| RUMP ANGLE | -0.5 | | |
| RUMP WIDTH | -0.9 | | |
| REAR LEG SET | -0.2 | | |
| LOCOMOTION | 2.6 | | |
| FOOT ANGLE | 1.1 | | |
| FORE UDDER | 3.9 | | |
| REAR UDDER | 3.3 | | |
| UDDER SUPPORT | 1.9 | | |
| UDDER DEPTH | 2.7 | | |
| TEAT PLACEMENT | 1.5 | | |
| TEAT LENGTH | -0.5 | | |
| OVERALL TYPE | 3.9 | | |
| OVERALL UDDER | 3.9 | | |
| OVERALL F&L | 3.8 | | |

SIRE: WELCOME ARMITAGE PASKY-ET

MS: REGANCREST ALTAIOTA-ET

MGS: MASCOL ET

DAM: TOPCROFT IOTA TRIXIE ET V687

MD: WORTWELL MASCOL TRIXIE

MGD: WORTWELL ROXELL TRIXIE

FR4188 DELTA MAGISTER

DOB: 02/08/2015

HB No. HOLNLDM000934274522



| EBI DEC. 2016 | REL | 10% | BOTTOM 20% | 30% | 40% | MEAN | 40% | 30% | TOP 20% | 10% |
|----------------------|-----|-----|------------|-----|-----|------|-----|-----|---------|-----|
| EBI 170 | 47% | | | | | | | | | |
| Prod. SI 95 | 63% | | | | | | | | | |
| Fert. SI 42 | 54% | | | | | | | | | |
| Calv. SI 30 | 7% | | | | | | | | | |
| Beef. SI 1 | 33% | | | | | | | | | |
| Maint. SI -10 | 32% | | | | | | | | | |
| Mgmt. SI 0 | 6% | | | | | | | | | |
| Health SI 12 | 41% | | | | | | | | | |

PRODUCTION

| Milk Kg | Fat Kg | Protein KG | Solid Kg | Fat % | Prot % |
|------------|-------------|-------------|-----------|-------------|-------------|
| 469 | 19.6 | 17.5 | 37 | 0.02 | 0.03 |

FERTILITY

| Calving Interval | Survival |
|------------------|------------|
| -0.7 | 2.8 |

CALVING DIFFICULTY

Records Difficulty Reliability

NO CALVING SURVEY**MANAGEMENT**

| Milk Speed | Temp | SCC | BCS | aAa Score |
|-------------|--------------|--------------|-------------|---------------|
| -2.3 | -0.02 | -0.18 | -0.5 | 156234 |

• aAa specialist 156

- Nearly 4 points for type
- Super production figures

LINEAR EVALUATION - INTERBULL 2016

| | | -2 | +2 |
|----------------|------|----|----|
| STATURE | 1.7 | | |
| CHEST WIDTH | -0.1 | | |
| BODY DEPTH | 0.8 | | |
| ANGULARITY | 1.3 | | |
| RUMP ANGLE | 3.1 | | |
| RUMP WIDTH | 2.3 | | |
| REAR LEG SET | -2.5 | | |
| LOCOMOTION | 3.5 | | |
| FOOT ANGLE | 2.5 | | |
| FORE UDDER | 3.3 | | |
| REAR UDDER | 2.9 | | |
| UDDER SUPPORT | 2.4 | | |
| UDDER DEPTH | 2.1 | | |
| TEAT PLACEMENT | 2.9 | | |
| TEAT LENGTH | -1 | | |
| OVERALL TYPE | 3.9 | | |
| OVERALL UDDER | 3.1 | | |
| OVERALL F&L | 3.9 | | |

SIRE: FLEVO GENETICS WHATSAPP RF

MS: DELTA DIRECT

MGS: GIBOR

DAM: DELTA MAGIC RF

MD: DELTA MARGJE

MGD: DELTA MADAME

FR4091 (IG) EVERGREEN ALADDIN

DOB: 12/11/2015

HB No. HOLIRLM111107750995



Bred by: Liam Murphy. Bagenalstown Co Carlow



| EBI DEC. 2016 | REL | 10% | BOTTOM 20% | 30% | 40% | MEAN | 40% | 30% | TOP 20% | 10% |
|----------------------|-----|-----|------------|-----|-----|------|-----|-----|---------|-----|
| EBI 202 | 49% | | | | | | | | | |
| Prod. SI 88 | 62% | | | | | | | | | |
| Fert. SI 84 | 49% | | | | | | | | | |
| Calv. SI 32 | 42% | | | | | | | | | |
| Beef. SI 1 | 35% | | | | | | | | | |
| Maint. SI -13 | 35% | | | | | | | | | |
| Mgmt. SI 4 | 10% | | | | | | | | | |
| Health SI 7 | 44% | | | | | | | | | |

PRODUCTION

| Milk Kg | Fat Kg | Protein KG | Solid Kg | Fat % | Prot % |
|------------|-------------|-------------|-----------|--------------|-------------|
| 495 | 19.2 | 16.9 | 36 | -0.01 | 0.01 |

FERTILITY

| Calving Interval | Survival |
|------------------|------------|
| -2.5 | 4.4 |

CALVING DIFFICULTY

| Records | Difficulty | Reliability |
|---------|------------|-------------|
| | | |

NO CALVING SURVEY

MANAGEMENT

| Milk Speed | Temp | SCC | BCS | aAa Score |
|-------------|-------------|--------------|------------|---------------|
| -8.7 | 0.05 | -0.16 | 1.1 | 435216 |

- Great balance of production, index and type
- Superb F₁L and Udder scores
- 36kgs solids with positive %

LINEAR EVALUATION - INTERBULL 2016

| | | -2 | +2 |
|----------------|------|----|----|
| STATURE | 2.1 | | |
| CHEST WIDTH | 1.7 | | |
| BODY DEPTH | 1.5 | | |
| ANGULARITY | 1.1 | | |
| RUMP ANGLE | 0.2 | | |
| RUMP WIDTH | 3.6 | | |
| REAR LEG SET | -1 | | |
| LOCOMOTION | 2.9 | | |
| FOOT ANGLE | 1.5 | | |
| FORE UDDER | 4.5 | | |
| REAR UDDER | 3.1 | | |
| UDDER SUPPORT | 2.8 | | |
| UDDER DEPTH | 3.1 | | |
| TEAT PLACEMENT | 1.1 | | |
| TEAT LENGTH | -2.1 | | |
| OVERALL TYPE | 3.6 | | |
| OVERALL UDDER | 3.6 | | |
| OVERALL F&L | 3.7 | | |

SIRE: BALLYCAIRN CORINTHIAN

MS: (IG) ARDNASELEM SEVEN ET

MGS: ROUMARE

DAM: EVERGREEN SEVEN LAUREN V687

MD: SWIFTSHEATH ROUMAR LAUREN 2 ET V686

MGD: LEAGH JES SHOTTLE LAUREN ET EX92 2E

FR2033 (IG) GOLDENFIELD RASCAL ET

DOB: 02/02/2014

HB No. HOLIRLM211110642400



Dam

Jane Steel

Bred by: John & Padraic Murphy. Kilmanagh, Co Kilkenny



| EBI DEC. 2016 | REL | 10% | BOTTOM 20% | 30% | 40% | MEAN | 40% | 30% | TOP 20% | 10% |
|---------------------|-----|-----|------------|-----|-----|------|-----|-----|---------|-----|
| EBI 192 | 62% | | | | | | | | | |
| Prod. SI 71 | 73% | | | | | | | | | |
| Fert. SI 72 | 60% | | | | | | | | | |
| Calv. SI 44 | 78% | | | | | | | | | |
| Beef. SI -12 | 46% | | | | | | | | | |
| Maint. SI 7 | 45% | | | | | | | | | |
| Mgmt. SI -1 | 30% | | | | | | | | | |
| Health SI 11 | 57% | | | | | | | | | |

PRODUCTION

| Milk Kg | Fat Kg | Protein KG | Solid Kg | Fat % | Prot % |
|------------|-------------|-------------|-----------|--------------|-------------|
| 397 | 10.5 | 14.5 | 25 | -0.09 | 0.02 |

FERTILITY

| Calving Interval | Survival |
|------------------|------------|
| -3.7 | 2.2 |

CALVING DIFFICULTY

| Records | Difficulty | Reliability |
|-----------|------------|-------------|
| 96 | 2.4 | 77 |

MANAGEMENT

| Milk Speed | Temp | SCC | BCS |
|-------------|--------------|--------------|------------|
| -7.4 | -0.09 | -0.18 | 0.4 |

• Another star from the Raven family

• Balance bull with super production and type

LINEAR EVALUATION - INTERBULL 2016

| | | -2 | +2 |
|----------------|------|----|----|
| STATURE | 1 | | |
| CHEST WIDTH | -0.3 | | |
| BODY DEPTH | -0.9 | | |
| ANGULARITY | -0.3 | | |
| RUMP ANGLE | 3 | | |
| RUMP WIDTH | -0.9 | | |
| REAR LEG SET | -1.6 | | |
| LOCOMOTION | 2.8 | | |
| FOOT ANGLE | 1.4 | | |
| FORE UDDER | 2.5 | | |
| REAR UDDER | 1.7 | | |
| UDDER SUPPORT | 1.5 | | |
| UDDER DEPTH | 1.8 | | |
| TEAT PLACEMENT | 1.2 | | |
| TEAT LENGTH | 1 | | |
| OVERALL TYPE | 2.2 | | |
| OVERALL UDDER | 1.5 | | |
| OVERALL F&L | 2.3 | | |

SIRE: DELTA GRAVITY

MS: BRAEDALE GOLDWYN

MGS: O-BEE MANFRED JUSTICE ET TV TL

DAM: GOLDENFIELD GOLD RAVEN EX91

MD: MONAMORE OMAN RAVEN ET EX90

MGD: MONAMORE DURHAM RAVEN EX93 2E

FR4017 (IG) MILEWATER LEON

DOB: 02/02/2015

HB No. H0LIRLM151047871151



Dam

Bred by: Kevin Kelleher. Whitechurch, Co Cork



| EBI DEC. 2016 | | REL | 10% | BOTTOM 20% | 30% | 40% | MEAN | 40% | 30% | TOP 20% | 10% |
|---------------|------------|-----|-----|------------|-----|-----|------|-----|-----|---------|-----|
| EBI | 255 | 50% | | | | | | | | | |
| Prod. SI | 68 | 61% | | | | | | | | | |
| Fert. SI | 150 | 48% | | | | | | | | | |
| Calv. SI | 52 | 53% | | | | | | | | | |
| Beef. SI | -10 | 42% | | | | | | | | | |
| Maint. SI | -3 | 38% | | | | | | | | | |
| Mgmt. SI | -2 | 14% | | | | | | | | | |
| Health SI | 1 | 45% | | | | | | | | | |

PRODUCTION

| | | | | | |
|------------|-------------|------------|-----------|-------------|-------------|
| Milk Kg | Fat Kg | Protein KG | Solid Kg | Fat % | Prot % |
| 113 | 14.1 | 9.6 | 24 | 0.16 | 0.10 |

FERTILITY

| | |
|------------------|----------|
| Calving Interval | Survival |
| -7.3 | 5 |

CALVING DIFFICULTY

Records Difficulty Reliability

NO CALVING SURVEY

MANAGEMENT

| | | | |
|------------|--------------|--------------|------------|
| Milk Speed | Temp | SCC | BCS |
| -6 | -0.09 | -0.01 | 1.1 |

- Balance bull
- High Index
- Fertility improver
- Super components

LINEAR EVALUATION - INTERBULL 2016

| | | -2 | +2 |
|----------------|------|----|----|
| STATURE | -1.3 | | |
| CHEST WIDTH | 0 | | |
| BODY DEPTH | -1.4 | | |
| ANGULARITY | -0.9 | | |
| RUMP ANGLE | 1.4 | | |
| RUMP WIDTH | -0.4 | | |
| REAR LEG SET | -0.2 | | |
| LOCOMOTION | -0.2 | | |
| FOOT ANGLE | 0.8 | | |
| FORE UDDER | 0.7 | | |
| REAR UDDER | 0.4 | | |
| UDDER SUPPORT | 0.2 | | |
| UDDER DEPTH | 0.3 | | |
| TEAT PLACEMENT | -0.5 | | |
| TEAT LENGTH | -3.2 | | |
| OVERALL TYPE | 0.2 | | |
| OVERALL UDDER | 0.7 | | |
| OVERALL F&L | 0.4 | | |

SIRE: RADNEY LEVI 5

MS: CO-OP OMAN LOYDIE-ET

MGS: MILEWATER FRASER

DAM: MILEWATER OYK LADYBIRD VG88

MD: MILEWATER FRA LADYBIRD VG87

MGD: MILEWATER TIH LADYBIRD VG85

FR2001 (IG) MONAMORE RHATTIGAN ET

DOB: 19/09/2013

HB No. HOLIRLM261006944616



| EBI DEC. 2016 | REL | 10% | BOTTOM 20% | 30% | 40% | MEAN | 40% | 30% | TOP 20% | 10% |
|---------------------|-----|-----|------------|-----|-----|------|-----|-----|---------|-----|
| EBI 144 | 63% | | | | | | | | | |
| Prod. SI 85 | 75% | | | | | | | | | |
| Fert. SI 15 | 63% | | | | | | | | | |
| Calv. SI 50 | 83% | | | | | | | | | |
| Beef. SI -5 | 40% | | | | | | | | | |
| Maint. SI -7 | 37% | | | | | | | | | |
| Mgmt. SI 3 | 13% | | | | | | | | | |
| Health SI 4 | 57% | | | | | | | | | |

PRODUCTION

| Milk Kg | Fat Kg | Protein KG | Solid Kg | Fat % | Prot % |
|------------|-------------|-------------|-----------|--------------|-------------|
| 422 | 16.4 | 15.9 | 32 | -0.01 | 0.03 |

FERTILITY

| Calving Interval | Survival |
|------------------|------------|
| 1.2 | 2.5 |

CALVING DIFFICULTY

| Records | Difficulty | Reliability |
|------------|------------|-------------|
| 230 | 2.1 | 87 |

MANAGEMENT

| Milk Speed | Temp | SCC | BCS | aAa Score |
|--------------|--------------|--------------|-------------|---------------|
| -15.2 | -0.03 | -0.04 | -1.2 | 243165 |

- High production Latimer son from the Ravens
- Great young stock on the ground
- Over 2 points type with huge solids and positive protein +0.03%

LINEAR EVALUATION - INTERBULL 2016

| | | -2 | +2 |
|----------------|------|----|----|
| STATURE | -0.1 | | |
| CHEST WIDTH | -2.7 | | |
| BODY DEPTH | -2.3 | | |
| ANGULARITY | 0.8 | | |
| RUMP ANGLE | 1.2 | | |
| RUMP WIDTH | -0.8 | | |
| REAR LEG SET | -0.8 | | |
| LOCOMOTION | 0.6 | | |
| FOOT ANGLE | -0.3 | | |
| FORE UDDER | 2.7 | | |
| REAR UDDER | 3.4 | | |
| UDDER SUPPORT | 2.2 | | |
| UDDER DEPTH | 2.5 | | |
| TEAT PLACEMENT | 1.9 | | |
| TEAT LENGTH | -2 | | |
| OVERALL TYPE | 2.3 | | |
| OVERALL UDDER | 2.8 | | |
| OVERALL F&L | 2.4 | | |

SIRE: GENERATIONS LATIMER

MS: MASCOL ET

MGS: O-BEE MANFRED JUSTICE ET TV TL

DAM: MONAMORE MCL RAVEN VG86

MD: MONAMORE OMAN RAVEN ET EX90

MGD: MONAMORE DURHAM RAVEN EX93 2E

PRE-ORDER

IRISH DTR PROVEN

S1233 AMIGHETTI NUMERO UNO TV TL TY

DOB: 15/07/2010

HB No. HOLITAM017990915143



| EBI DEC. 2016 | | REL | 10% | 20% | 30% | 40% | MEAN | 40% | 30% | 20% | 10% |
|---------------|------------|-----|-----|-----|-----|-----|------|-----|-----|-----|-----|
| EBI | 112 | 79% | | | | | | | | | |
| Prod. SI | 26 | 90% | | | | | | | | | |
| Fert. SI | 66 | 79% | | | | | | | | | |
| Calv. SI | 8 | 89% | | | | | | | | | |
| Beef. SI | 9 | 77% | | | | | | | | | |
| Maint. SI | -17 | 44% | | | | | | | | | |
| Mgmt. SI | 7 | 34% | | | | | | | | | |
| Health SI | 12 | 80% | | | | | | | | | |

PRODUCTION

| | | | | | |
|------------|-------------|------------|-----------|-------------|--------------|
| Milk Kg | Fat Kg | Protein KG | Solid Kg | Fat % | Prot % |
| 195 | 12.8 | 4.6 | 17 | 0.09 | -0.03 |

FERTILITY

| | |
|------------------|------------|
| Calving Interval | Survival |
| -2.8 | 2.6 |

CALVING DIFFICULTY

| | | |
|------------|------------|-------------|
| Records | Difficulty | Reliability |
| 511 | 3.9 | 95 |

MANAGEMENT

| | | | | |
|--------------|-------------|--------------|-------------|---------------|
| Milk Speed | Temp | SCC | BCS | aAa Score |
| -10.2 | 0.12 | -0.16 | -0.4 | 342516 |

- World leading sire
- Over 3 points for Type and Udders
- Huge farmer satisfaction

LINEAR EVALUATION - INTERBULL 2016

| | | -2 | +2 |
|----------------|------|----|----|
| STATURE | 2 | | |
| CHEST WIDTH | -0.5 | | |
| BODY DEPTH | 0.3 | | |
| ANGULARITY | 1.2 | | |
| RUMP ANGLE | -0.5 | | |
| RUMP WIDTH | 2.6 | | |
| REAR LEG SET | -0.5 | | |
| LOCOMOTION | 0.9 | | |
| FOOT ANGLE | 1.2 | | |
| FORE UDDER | 3.7 | | |
| REAR UDDER | 3.3 | | |
| UDDER SUPPORT | 3.6 | | |
| UDDER DEPTH | 2.9 | | |
| TEAT PLACEMENT | 2 | | |
| TEAT LENGTH | 0 | | |
| OVERALL TYPE | 3.1 | | |
| OVERALL UDDER | 3.1 | | |
| OVERALL F&L | 1.7 | | |

SIRE: LONG-LANGS OMAN OMAN TV TL TY

MS: PICSTON SHUTTLE

MGS: BOSS IRON ET

DAM: AMIGHETTI SHUTTLE AVE

MD: AMIGHETTI IRON ALLINDRA

MGD: AMIGHETTI RUDOLPH NIKKI ET

FR2270 BOLDI ADMIRATION

DOB: 01/03/2014

HB No. HOLCANM000108842547



GDam



| EBI DEC. 2016 | | REL | 10% | 20% | 30% | 40% | MEAN | 40% | 30% | 20% | 10% |
|---------------|------------|-----|-----|-----|-----|-----|------|-----|-----|-----|-----|
| EBI | 154 | 56% | | | | | | | | | |
| Prod. SI | 55 | 71% | | | | | | | | | |
| Fert. SI | 71 | 56% | | | | | | | | | |
| Calv. SI | 32 | 65% | | | | | | | | | |
| Beef. SI | 2 | 35% | | | | | | | | | |
| Maint. SI | -20 | 33% | | | | | | | | | |
| Mgmt. SI | 4 | 7% | | | | | | | | | |
| Health SI | 10 | 51% | | | | | | | | | |

PRODUCTION

| | | | | | |
|------------|-------------|------------|-----------|-------------|-------------|
| Milk Kg | Fat Kg | Protein KG | Solid Kg | Fat % | Prot % |
| 302 | 15.4 | 10 | 25 | 0.06 | 0.00 |

FERTILITY

| | |
|------------------|------------|
| Calving Interval | Survival |
| -1.1 | 4.8 |

CALVING DIFFICULTY

| | | |
|-----------|------------|-------------|
| Records | Difficulty | Reliability |
| 30 | 3.9 | 61 |

MANAGEMENT

| | | | |
|--------------|-------------|--------------|-------------|
| Milk Speed | Temp | SCC | BCS |
| -10.1 | 0.03 | -0.12 | -1.4 |

- Great reports on stock
- Super Type, Production
- Available sexed

LINEAR EVALUATION - INTERBULL 2016

| | | -2 | +2 |
|----------------|------|----|----|
| STATURE | 1.9 | | |
| CHEST WIDTH | -1.3 | | |
| BODY DEPTH | -0.2 | | |
| ANGULARITY | 1.8 | | |
| RUMP ANGLE | 0.1 | | |
| RUMP WIDTH | 1.4 | | |
| REAR LEG SET | -0.1 | | |
| LOCOMOTION | 3.4 | | |
| FOOT ANGLE | 1.1 | | |
| FORE UDDER | 3.2 | | |
| REAR UDDER | 3.2 | | |
| UDDER SUPPORT | 3.6 | | |
| UDDER DEPTH | 2.4 | | |
| TEAT PLACEMENT | 1.5 | | |
| TEAT LENGTH | 0 | | |
| OVERALL TYPE | 3.5 | | |
| OVERALL UDDER | 2.6 | | |
| OVERALL F&L | 3.6 | | |

SIRE: VIEUXSAULE FLAME-ET

MS: MISTY SPRINGS SUPERSONIC

MGS: LONG-LANGS OMAN OMAN TV TL TY

DAM: BOLDI V S G SUPERSONIC ALYSSA V686

MD: VELTHUIS SG MOM ALESIA V687

MGD: ALLYNDALDE-I GOLDWYN ALBANY V687

List

| Code | Name | EBI | EBI rel | Production SI | Fertility SI | Health SI | Mk Dau | Mk Hrd | Milk | Fat | Prot | Solids | Fat % | Prot % | Calving Interval | Survival | Calving Records | Calving Diff |
|--------|-------------------------------|-----|---------|---------------|--------------|-----------|--------|--------|------|------|------|--------|-------|--------|------------------|----------|-----------------|--------------|
| FR2256 | ABS CRAYON | 160 | 51 | 79 | 34 | 14 | 0 | 0 | 338 | 15.1 | 14.2 | 29 | 0.03 | 0.05 | -0.4 | 2.5 | 10 | 2.6 |
| S1233 | AMIGHETTI NUMERO UNO TV TL TY | 112 | 79 | 26 | 66 | 12 | 48 | 24 | 195 | 12.8 | 4.6 | 17 | 0.09 | -0.03 | -2.8 | 2.6 | 511 | 3.9 |
| FR4010 | APINA NADAL | 158 | 49 | 66 | 62 | 8 | 0 | 0 | 381 | 18.4 | 12.2 | 31 | 0.05 | -0.01 | -0.0 | 5.1 | | 2.5 |
| S2249 | APINA NORMAN | 184 | 64 | 35 | 114 | 9 | 0 | 0 | 235 | 13.0 | 6.4 | 19 | 0.06 | -0.02 | -4.6 | 4.7 | 276 | 3.4 |
| FR2473 | BENNER BARDO | 120 | 51 | 82 | 14 | 7 | 0 | 0 | 427 | 23.9 | 14.4 | 38 | 0.11 | 0.00 | 1.3 | 2.5 | | 3.3 |
| FR2270 | BOLDI ADMIRATION | 154 | 56 | 55 | 71 | 10 | 0 | 0 | 302 | 15.4 | 10.0 | 25 | 0.06 | 0.00 | -1.1 | 4.8 | 30 | 3.9 |
| S3136 | BOLDI V ARMOUR | 195 | 49 | 81 | 76 | 13 | 0 | 0 | 432 | 19.6 | 14.9 | 34 | 0.04 | 0.01 | -3.9 | 2.4 | | 2.8 |
| S2211 | BUISWEERD MOBILE | 168 | 53 | 74 | 80 | 10 | 0 | 0 | 285 | 10.9 | 13.3 | 24 | -0.01 | 0.06 | -2.8 | 3.7 | | 3.3 |
| FR2114 | CLORANE BENNY -32 | 221 | 63 | 46 | 120 | -1 | 0 | 0 | 167 | 12.7 | 7.3 | 20 | 0.10 | 0.03 | -5.2 | 4.6 | 74 | 2.1 |
| S938 | CRACKHOLM FEVER | -16 | 94 | -7 | -35 | 12 | 382 | 95 | 194 | 6.5 | 0.5 | 7 | -0.02 | -0.10 | 3.3 | 0.5 | 1030 | 3.9 |
| ATD | DELTA ATLANTIC | 126 | 78 | 36 | 47 | 14 | 0 | 0 | 167 | 3.0 | 7.2 | 10 | -0.06 | 0.03 | -2.3 | 1.6 | 912 | 3.5 |
| S2051 | DELTA DAKAR | 43 | 37 | 59 | -52 | 6 | 0 | 0 | 402 | 10.0 | 12.8 | 23 | -0.09 | -0.02 | 4.2 | 0.0 | 70 | 2.5 |
| FR4188 | DELTA MAGISTER | 170 | 47 | 95 | 42 | 12 | 0 | 0 | 469 | 19.6 | 17.5 | 37 | 0.02 | 0.03 | -0.7 | 2.8 | | 3.0 |
| ZTG | DELTA TRADING | 189 | 82 | 72 | 86 | 4 | 0 | 0 | 254 | 8.0 | 13.0 | 21 | -0.03 | 0.07 | -2.5 | 4.6 | | 3.2 |
| FR2095 | DENMIRE MESDOOR-ET | 47 | 28 | 54 | -40 | 13 | 0 | 0 | 366 | 15.8 | 10.7 | 26 | 0.03 | -0.02 | 3.8 | 0.7 | 6 | 3.9 |
| FR2072 | DG CALANDO-ET | 67 | 30 | 56 | -25 | 5 | 0 | 0 | 444 | 18.3 | 11.6 | 30 | 0.02 | -0.06 | 3.5 | 1.5 | 19 | 3.8 |
| S1137 | GEN-I-BEQ LAVAMAN | 140 | 85 | 90 | 28 | 5 | 108 | 59 | 311 | 14.5 | 15.5 | 30 | 0.04 | 0.08 | -0.9 | 1.4 | 639 | 2.5 |
| GXC | GK CREAM | 181 | 61 | 59 | 103 | 7 | 0 | 0 | 342 | 9.7 | 11.9 | 22 | -0.06 | 0.01 | -2.8 | 5.6 | 641 | 5.3 |
| ZSR | HOANSTER ZANZIBAR | 192 | 57 | 52 | 104 | 9 | 0 | 0 | 298 | 11.2 | 10.2 | 21 | -0.01 | 0.00 | -5.4 | 3.1 | 334 | 3.5 |
| FR2002 | (IG) ARDNASALEM MORGAN ET | 161 | 55 | 68 | 37 | 8 | 0 | 0 | 388 | 13.7 | 13.4 | 27 | -0.03 | 0.01 | -1.3 | 1.7 | 8 | 2.7 |
| FR2235 | (IG) BALLAGH PRINCE SPICE | 275 | 58 | 83 | 141 | 4 | 0 | 0 | 85 | 10.0 | 12.1 | 22 | 0.11 | 0.16 | -7.2 | 4.4 | 17 | 1.6 |
| HZB | (IG) BALLYDEHOB PAT 1356 | 255 | 67 | 67 | 132 | 4 | 0 | 0 | 142 | 13.8 | 9.8 | 24 | 0.13 | 0.09 | -6.0 | 4.9 | 15072 | 2.4 |
| YAB | (IG) BARTLEMY ANDREW | 280 | 59 | 67 | 150 | 10 | 0 | 0 | 152 | 16.9 | 9.5 | 26 | 0.18 | 0.08 | -6.9 | 5.4 | 1124 | 2.4 |
| FR4091 | (IG) EVERGREEN ALADDIN | 202 | 49 | 88 | 84 | 7 | 0 | 0 | 495 | 19.2 | 16.9 | 36 | -0.01 | 0.01 | -2.5 | 4.4 | | 3.6 |
| FR2029 | (IG) GOLDENFIELD ERIN ET | 120 | 61 | 64 | 19 | 9 | 0 | 0 | 473 | 12.0 | 14.2 | 26 | -0.11 | -0.03 | 0.8 | 2.4 | 53 | 2.9 |
| FR2028 | (IG) GOLDENFIELD RAPHAEL ET | 194 | 61 | 80 | 64 | 9 | 0 | 0 | 383 | 15.9 | 14.8 | 31 | 0.01 | 0.03 | -1.6 | 3.7 | 1482 | 1.7 |
| FR2033 | (IG) GOLDENFIELD RASCAL ET | 192 | 62 | 71 | 72 | 11 | 0 | 0 | 397 | 10.5 | 14.5 | 25 | -0.09 | 0.02 | -3.7 | 2.2 | 96 | 2.4 |
| EKK | (IG) KILGARRIFFE EMERALD STAR | 108 | 60 | 50 | 30 | 8 | 0 | 0 | 210 | 12.0 | 8.5 | 21 | 0.06 | 0.03 | 0.3 | 2.8 | 434 | 3.6 |
| FR4017 | (IG) MILEWATER LEON | 255 | 50 | 68 | 150 | 1 | 0 | 0 | 113 | 14.1 | 9.6 | 24 | 0.16 | 0.10 | -7.3 | 5.0 | | 1.6 |
| EFM | (IG) MONAMORE E-FORCE ET | 154 | 67 | 23 | 110 | 10 | 0 | 0 | 91 | 2.4 | 4.4 | 7 | -0.02 | 0.03 | -5.7 | 3.3 | 371 | 3.1 |
| FR2001 | (IG) MONAMORE RHATTIGAN ET | 144 | 63 | 85 | 15 | 4 | 0 | 0 | 422 | 16.4 | 15.9 | 32 | -0.01 | 0.03 | 1.2 | 2.5 | 230 | 2.1 |
| S3119 | JK EDER-I CONTROL | 42 | 63 | 31 | -27 | 8 | 0 | 0 | 387 | 5.4 | 9.1 | 15 | -0.16 | -0.07 | 3.3 | 1.2 | | 4.9 |
| KSB | KISS BOWSIDA | 174 | 67 | 40 | 92 | 7 | 2 | 1 | 81 | 9.0 | 5.8 | 15 | 0.10 | 0.06 | -4.1 | 3.4 | 1588 | 3.0 |
| FR2261 | LARCREST COMMEND-ET | 120 | 42 | 55 | 26 | 8 | 0 | 0 | 125 | 13.6 | 7.9 | 21 | 0.14 | 0.07 | -0.5 | 1.7 | | 4.0 |
| FR2391 | MILWOLDER MIAMI | 141 | 22 | 111 | 3 | 6 | 0 | 0 | 353 | 17.0 | 18.9 | 36 | 0.05 | 0.12 | 0.9 | 1.2 | | 2.9 |
| XPD | PELLERAT DYNAMITE | 99 | 79 | 8 | 46 | 9 | 114 | 37 | 80 | 2.0 | 2.0 | 4 | -0.02 | -0.01 | -1.4 | 2.4 | 1573 | 1.8 |
| FR4107 | POPPE RED HOT DARREL RED | 176 | 48 | 82 | 63 | 14 | 0 | 0 | 413 | 17.2 | 15.2 | 32 | 0.01 | 0.02 | -2.4 | 2.8 | | 3.2 |
| S901 | R-E-W SEAVER-ET | -14 | 93 | 27 | -24 | 15 | 477 | 157 | 251 | 0.0 | 7.5 | 8 | -0.16 | -0.02 | 2.3 | 0.4 | 1578 | 5.5 |
| S1684 | SANDY-VALLEY SALOON-ET | 66 | 63 | 78 | -40 | 4 | 0 | 0 | 733 | 20.8 | 18.4 | 39 | -0.12 | -0.10 | 3.2 | 0.0 | 13 | 4.6 |
| FR2262 | SANDY-VALLEY-I PENMANSHIP | 170 | 61 | 52 | 94 | 10 | 0 | 0 | 453 | 12.2 | 12.0 | 24 | -0.09 | -0.05 | -4.1 | 3.7 | 2 | 2.3 |
| SBS | STANTONS BARCODE | 182 | 79 | 73 | 57 | 12 | 55 | 22 | 266 | 13.3 | 12.5 | 26 | 0.05 | 0.06 | -2.0 | 2.7 | 297 | 3.5 |
| YKS | STERK KISS KYTEMAN | 148 | 57 | 88 | 20 | 7 | 0 | 0 | 423 | 22.0 | 15.6 | 38 | 0.08 | 0.02 | 0.4 | 2.1 | 242 | 3.1 |
| S2068 | SWISSBEC BREKEM | 64 | 44 | 63 | -29 | 5 | 0 | 0 | 375 | 10.8 | 12.9 | 24 | -0.06 | 0.00 | 2.7 | 0.4 | 13 | 3.0 |
| S2209 | TEXEL BEAUTY DEBUTANT | 159 | 53 | 63 | 72 | 10 | 0 | 0 | 364 | 15.3 | 12.0 | 27 | 0.01 | 0.00 | -2.3 | 3.7 | | 2.7 |
| FR2257 | TOPCROFT PESKY TRIX | 153 | 56 | 54 | 58 | 9 | 0 | 0 | 301 | 17.1 | 9.5 | 27 | 0.08 | -0.01 | -2.4 | 2.4 | 0 | 3.1 |
| S1488 | VAL-BISSON DOORMAN | 90 | 75 | 55 | -12 | 17 | 0 | 0 | 292 | 12.2 | 10.3 | 22 | 0.01 | 0.01 | 2.3 | 1.5 | 381 | 3.6 |
| S1559 | VANDE DOMINANT-RED-ET | 159 | 64 | 39 | 88 | 7 | 0 | 0 | 226 | 12.3 | 7.0 | 19 | 0.06 | -0.01 | -3.8 | 3.4 | 371 | 2.6 |
| S2173 | VIEUXSAULE FLAME-ET | 130 | 61 | 42 | 65 | 8 | 0 | 0 | 132 | 16.4 | 5.6 | 22 | 0.19 | 0.02 | -1.9 | 3.5 | 362 | 4.6 |
| FR2059 | VIEW-HOME MONTEREY-ET | 42 | 31 | 35 | -15 | 6 | 0 | 0 | 372 | 11.7 | 8.5 | 20 | -0.05 | -0.07 | 2.2 | 1.1 | 41 | 2.8 |
| FR2094 | WALNUTLAWN SOLOMON | -11 | 30 | 25 | -60 | 10 | 0 | 0 | 242 | 9.1 | 5.7 | 15 | -0.01 | -0.04 | 4.5 | -0.3 | 67 | 4.1 |
| S1579 | WELCOME ARMITAGE PESKY-ET | 94 | 68 | 49 | 20 | 9 | 0 | 0 | 386 | 14.3 | 10.4 | 25 | -0.01 | -0.04 | -0.8 | 0.8 | 1783 | 3.1 |
| | Available Sexed | | | | | | | | | | | | | | | | | |

| Calving Diff Rel | Stature | Chest Width | BCS Depth | Angularity | Rump Angle | Rump Width | Rear Leg Set | Locomotion | Foot Angle | Fore Udder | Rear Udder Height | Udder Support | Udder Depth | Teat Placement | Teat Length | Overall Type | Overall Mammary | Overall Feet & Legs | Sire |
|------------------|---------|-------------|-----------|------------|------------|------------|--------------|------------|------------|------------|-------------------|---------------|-------------|----------------|-------------|--------------|-----------------|---------------------|----------------|
| 50 | 1.3 | 0.1 | 1.0 | 1.0 | -0.5 | 1.5 | -0.3 | 2.8 | 1.5 | 4.0 | 3.0 | 1.3 | 2.7 | 0.8 | -1.4 | 2.8 | 3.1 | 2.6 | BALISTO |
| 95 | 2.0 | -0.5 | 0.3 | 1.2 | -0.5 | 2.6 | -0.5 | 0.9 | 1.2 | 3.7 | 3.3 | 3.6 | 2.9 | 2.0 | -0.0 | 3.1 | 3.1 | 1.7 | MAN OMAN |
| 7 | 1.8 | 1.5 | 0.8 | 0.8 | 2.1 | 2.0 | -4.0 | 2.5 | 2.9 | 3.8 | 2.6 | 2.5 | 2.6 | 1.7 | -2.4 | 3.9 | 3.4 | 3.7 | BOUW ROCKY |
| 88 | 1.3 | -1.4 | -0.7 | 1.1 | 2.4 | 1.7 | -1.9 | 2.5 | 1.9 | 2.4 | 2.9 | 3.2 | 2.5 | 1.9 | -1.7 | 3.3 | 2.8 | 3.3 | NUMERO UNO |
| 65 | 2.8 | -0.5 | 1.7 | 2.7 | 0.4 | 2.8 | -0.9 | 3.3 | 2.2 | 3.3 | 4.6 | 3.5 | 2.6 | 2.0 | -0.6 | 4.2 | 3.2 | 4.3 | FLAME |
| 61 | 1.9 | -1.3 | -0.2 | 1.8 | 0.1 | 1.4 | -0.1 | 3.4 | 1.1 | 3.2 | 3.2 | 3.6 | 2.4 | 1.5 | 0.0 | 3.5 | 2.6 | 3.6 | FLAME |
| 23 | 2.3 | -0.4 | 0.2 | 1.1 | 0.8 | 1.9 | -1.4 | 2.1 | 1.8 | 1.9 | 2.5 | 2.8 | 2.5 | 1.4 | 0.7 | 2.7 | 2.3 | 2.7 | |
| 92 | 0.9 | 0.2 | 0.4 | 0.5 | 0.6 | 0.2 | -1.8 | 1.3 | 1.4 | 1.3 | 1.3 | 1.3 | 0.9 | 1.4 | -0.0 | 1.8 | 1.7 | 2.0 | |
| 74 | -0.6 | 0.4 | 0.1 | 0.3 | 4.0 | -2.9 | 0.7 | -0.5 | -0.9 | 1.4 | 1.3 | 0.4 | -0.1 | 1.2 | -3.5 | 0.4 | 1.1 | 0.5 | NFT |
| 97 | 2.5 | -1.2 | 0.7 | 1.5 | 2.0 | 0.6 | -0.8 | 3.6 | 1.7 | 2.6 | 2.5 | 2.0 | 1.9 | 0.6 | -0.6 | 2.7 | 2.1 | 2.7 | GOLDWYN |
| 96 | 1.2 | 1.1 | 0.4 | 0.1 | 1.7 | 0.6 | 0.4 | 2.3 | 0.1 | -0.2 | 1.6 | 1.0 | 1.5 | 0.4 | 0.1 | 1.0 | 0.4 | 1.7 | RAMOS |
| 80 | 0.6 | -0.4 | 1.0 | 0.9 | 0.4 | -0.4 | -1.6 | 1.8 | 1.3 | 2.2 | 2.2 | 0.8 | 1.8 | 1.4 | 1.3 | 2.2 | 2.0 | 1.6 | DANILLO |
| 8 | 1.7 | -0.1 | 0.8 | 1.3 | 3.1 | 2.3 | -2.5 | 3.5 | 2.5 | 3.3 | 2.9 | 2.4 | 2.1 | 2.9 | -1.0 | 3.9 | 3.1 | 3.9 | |
| 99 | 0.9 | 2.3 | 1.1 | 0.1 | -1.8 | 2.3 | -1.6 | 0.3 | 1.3 | 2.4 | 2.4 | 1.6 | 2.3 | 1.3 | -3.1 | 1.7 | 2.0 | 0.2 | |
| 35 | 2.5 | 0.1 | 1.6 | 1.7 | -0.4 | 2.5 | -0.6 | 3.3 | 1.6 | 3.5 | 3.1 | 2.5 | 2.7 | 2.1 | 0.0 | 3.1 | 2.6 | 2.8 | DOORMAN |
| 69 | 1.2 | -0.7 | 0.4 | 1.3 | 0.7 | 1.1 | -1.3 | 2.6 | 1.0 | 3.3 | 3.1 | 2.2 | 2.6 | 2.6 | -2.6 | 3.3 | 2.9 | 2.6 | MOGUL |
| 95 | 1.2 | -1.7 | 0.3 | 1.7 | -1.5 | -0.1 | -1.2 | 3.6 | 2.0 | 1.5 | 3.1 | 3.1 | 1.3 | 1.7 | -2.3 | 2.7 | 2.0 | 2.7 | MAN OMAN |
| 94 | 1.0 | 0.9 | -0.3 | 0.2 | 1.0 | 2.4 | 1.1 | 0.3 | 0.1 | 4.1 | 2.7 | 2.9 | 3.1 | 1.3 | -2.9 | 2.5 | 3.1 | 2.6 | O-COSMOPOLITAN |
| 91 | 1.5 | -0.6 | -1.0 | 0.3 | 0.6 | 0.5 | -1.7 | 2.7 | 2.3 | 1.9 | 1.8 | 1.6 | 2.8 | 1.4 | -0.4 | 2.4 | 1.7 | 2.5 | ARMITAGE |
| 50 | 0.0 | -1.1 | -1.2 | 0.5 | -1.8 | 0.7 | 1.3 | 0.9 | -0.8 | 1.7 | 2.0 | 0.6 | 2.7 | 1.4 | -1.1 | 1.8 | 1.3 | 1.8 | MORGAN |
| 59 | -1.4 | 0.1 | -2.2 | -1.9 | 3.0 | -0.5 | -2.3 | 1.5 | 0.9 | -0.2 | -0.3 | -0.6 | -0.3 | -0.6 | 1.8 | 0.3 | -0.2 | 0.6 | PSZ |
| 99 | -0.3 | 0.9 | -0.7 | -0.9 | 0.8 | 0.6 | -0.0 | -1.2 | -0.1 | -0.0 | 0.2 | -0.6 | 1.3 | -1.2 | -2.1 | 0.0 | -0.2 | -0.0 | PKK |
| 97 | -1.6 | 1.1 | -0.9 | -1.2 | -0.7 | -0.9 | 1.0 | 0.6 | -1.2 | 0.6 | 0.2 | -0.5 | -0.4 | -1.0 | -1.3 | 0.5 | 0.2 | 0.7 | WLY |
| 43 | 2.1 | 1.7 | 1.5 | 1.1 | 0.2 | 3.6 | -1.0 | 2.9 | 1.5 | 4.5 | 3.1 | 2.8 | 3.1 | 1.1 | -2.1 | 3.6 | 3.6 | 3.7 | CORINTHIAN |
| 70 | 2.2 | 1.8 | 2.2 | 0.6 | -1.6 | 2.6 | -0.9 | 1.2 | 1.0 | 3.0 | 2.0 | 2.7 | 1.8 | 1.5 | -0.3 | 1.8 | 2.2 | 1.7 | MASSEY |
| 97 | 1.9 | 0.5 | 1.0 | 0.9 | -0.9 | 2.7 | -0.2 | 1.3 | -0.5 | 2.6 | 1.9 | 2.2 | 2.3 | 1.2 | -0.8 | 1.9 | 2.2 | 2.1 | MASSEY |
| 77 | 1.0 | -0.3 | -0.9 | -0.3 | 3.0 | -0.9 | -1.6 | 2.8 | 1.4 | 2.5 | 1.7 | 1.5 | 1.8 | 1.2 | 1.0 | 2.2 | 1.5 | 2.3 | GRAVITY |
| 92 | -0.3 | 0.6 | -0.2 | 0.1 | 0.3 | -1.0 | -2.8 | 1.4 | 2.5 | 1.3 | 1.8 | 1.3 | 1.1 | 1.5 | 0.6 | 2.5 | 1.5 | 2.4 | EMERALD |
| 50 | -1.3 | -0.0 | -1.4 | -0.9 | 1.4 | -0.4 | -0.2 | -0.2 | 0.8 | 0.7 | 0.4 | 0.2 | 0.3 | -0.5 | -3.2 | 0.2 | 0.7 | 0.4 | YRY |
| 91 | 1.4 | -2.1 | -1.3 | 0.5 | 2.2 | -0.3 | 0.2 | 1.7 | -0.0 | 2.4 | 2.2 | 3.2 | 2.9 | 2.5 | -0.3 | 2.1 | 2.3 | 2.2 | NUMERO UNO |
| 87 | -0.1 | -2.7 | -2.3 | 0.8 | 1.2 | -0.8 | -0.8 | 0.6 | -0.3 | 2.7 | 3.4 | 2.2 | 2.5 | 1.9 | -2.0 | 2.3 | 2.8 | 2.4 | LATIMER |
| 73 | 2.8 | 2.1 | 2.0 | 1.0 | 1.9 | 3.4 | -2.2 | 1.4 | 2.7 | 3.5 | 2.4 | 2.5 | 3.4 | 1.1 | 0.9 | 3.1 | 2.7 | 2.6 | SNOWMAN |
| 98 | 0.9 | 1.3 | 0.1 | -0.6 | 0.7 | -0.8 | -1.2 | 1.0 | 1.9 | 1.4 | 0.0 | 0.0 | 2.4 | 0.7 | -0.2 | 0.8 | 0.6 | 1.0 | BOWSER |
| 26 | 1.8 | -0.0 | 1.2 | 1.6 | -0.5 | 3.5 | -0.3 | 0.6 | 1.6 | 3.7 | 3.0 | 1.7 | 2.9 | 1.5 | -0.4 | 1.6 | 3.2 | 1.4 | BALISTO |
| 6 | 0.5 | 0.6 | 0.0 | 0.3 | 0.7 | 1.1 | -1.3 | 2.4 | 1.3 | 0.4 | 0.9 | 0.2 | 0.3 | 1.6 | -1.0 | 1.5 | 0.9 | 2.0 | MAESTRO |
| 98 | 1.4 | -0.9 | 0.5 | 1.0 | -0.7 | 2.2 | 1.1 | -0.3 | -0.7 | 3.5 | 2.9 | 1.1 | 2.7 | 1.8 | -1.0 | 1.9 | 2.5 | -0.2 | MANIFOLD |
| 24 | 1.2 | -1.0 | 0.2 | 1.5 | 1.3 | -0.1 | -1.9 | 1.7 | 2.6 | 2.4 | 2.7 | 2.5 | 1.8 | 1.3 | -1.9 | 2.5 | 2.3 | 2.3 | DEBUTANT |
| 98 | 2.3 | 0.6 | 1.6 | 1.1 | 1.0 | 2.1 | -0.7 | 3.4 | 1.0 | 2.9 | 3.5 | 2.0 | 2.1 | 1.0 | 0.8 | 2.6 | 2.0 | 2.5 | GOLDWYN |
| 75 | 3.3 | 0.9 | 2.2 | 2.2 | -2.0 | 4.6 | 0.7 | 1.3 | -0.1 | 2.5 | 3.3 | 3.8 | 1.6 | 2.5 | 0.6 | 3.0 | 2.9 | 1.9 | ALTAIOTA-ET |
| 68 | 2.1 | -0.3 | -0.2 | 0.8 | 1.4 | 2.5 | -0.1 | 2.7 | 1.6 | 1.3 | 2.4 | 2.1 | 2.7 | 1.3 | 0.8 | 2.2 | 1.7 | 2.4 | ENFORCER |
| 90 | 1.3 | -1.7 | -0.2 | 1.5 | 1.5 | 1.4 | -1.1 | 0.8 | 0.7 | 1.9 | 2.7 | 2.3 | 2.0 | 1.8 | -1.0 | 2.0 | 2.1 | 0.7 | MAN OMAN |
| 87 | 0.4 | 1.0 | 0.3 | -0.1 | -0.2 | 0.5 | -2.9 | 2.5 | 1.7 | 1.9 | 2.0 | 2.6 | 0.9 | 1.7 | 2.3 | 2.5 | 1.6 | 2.4 | AIKMAN |
| 76 | 1.7 | 0.2 | 0.8 | 1.5 | 0.4 | 0.6 | 0.7 | 2.5 | -0.2 | 2.0 | 2.4 | 3.6 | 2.0 | 1.0 | 1.1 | 2.7 | 2.5 | 1.8 | BOOKEM |
| 92 | 1.6 | -1.6 | -1.1 | 1.2 | -0.3 | 0.4 | -0.7 | 1.4 | 1.7 | 1.7 | 2.2 | 2.4 | 1.7 | 1.6 | 0.7 | 2.2 | 2.0 | 2.1 | |
| 46 | 1.0 | -0.9 | -0.4 | 1.2 | -0.5 | -0.9 | -0.2 | 2.6 | 1.1 | 3.9 | 3.3 | 1.9 | 2.7 | 1.5 | -0.5 | 3.8 | 3.8 | 3.8 | PESKY |
| 92 | 3.0 | 1.9 | 3.0 | 1.8 | -1.5 | 3.9 | -0.5 | 3.5 | 1.8 | 4.3 | 3.6 | 2.8 | 3.2 | 2.8 | -0.3 | 3.8 | 3.2 | 3.4 | BOOKEM |
| 91 | 1.6 | -0.1 | 0.8 | 0.9 | 1.7 | 1.5 | -0.6 | 2.4 | 0.7 | 0.6 | 1.2 | 1.3 | 1.3 | 1.5 | 0.7 | 1.4 | 1.0 | 1.6 | MAN OMAN |
| 91 | 2.3 | 0.3 | 1.3 | 1.9 | -0.6 | 4.3 | -0.4 | 2.2 | 2.0 | 2.7 | 2.9 | 3.0 | 1.9 | 1.9 | 0.3 | 3.2 | 2.7 | 3.0 | NUMERO UNO |
| 76 | 2.2 | 0.1 | 0.8 | 1.1 | -0.9 | 1.9 | -1.0 | 2.1 | 1.5 | 2.5 | 2.4 | 2.4 | 2.7 | 1.3 | -1.2 | 2.5 | 2.0 | 2.2 | MCCUTCHEN |
| 75 | 2.5 | 0.4 | 2.1 | 1.7 | -0.5 | 2.7 | -0.8 | 2.9 | 1.8 | 3.0 | 2.8 | 2.2 | 2.3 | 2.1 | -0.3 | 2.9 | 2.4 | 2.7 | DOORMAN |
| 98 | 1.5 | -0.9 | -0.3 | 1.2 | 0.7 | 1.2 | -1.9 | 1.6 | 2.5 | 0.5 | 0.9 | 1.3 | 1.3 | 1.2 | 0.5 | 1.8 | 1.6 | 1.5 | ARMITAGE |

S2211 BUISWEERD MOBILE

DOB: 17/07/2012

HB No. HOLNLDM000938401263



| EBI DEC. 2016 | | REL | 10% | 20% | 30% | 40% | MEAN | 40% | 30% | 20% | 10% |
|---------------|------------|-----|-----|-----|-----|-----|------|-----|-----|-----|-----|
| EBI | 168 | 53% | | | | | | | | | |
| Prod. SI | 74 | 68% | | | | | | | | | |
| Fert. SI | 80 | 54% | | | | | | | | | |
| Calv. SI | 8 | 82% | | | | | | | | | |
| Beef. SI | -1 | 15% | | | | | | | | | |
| Maint. SI | -2 | 11% | | | | | | | | | |
| Mgmt. SI | 0 | 8% | | | | | | | | | |
| Health SI | 10 | 48% | | | | | | | | | |

PRODUCTION

| | | | | | |
|------------|-------------|-------------|-----------|--------------|-------------|
| Milk Kg | Fat Kg | Protein KG | Solid Kg | Fat % | Prot % |
| 285 | 10.9 | 13.3 | 24 | -0.01 | 0.06 |

FERTILITY

| | |
|------------------|------------|
| Calving Interval | Survival |
| -2.8 | 3.7 |

CALVING DIFFICULTY

| | | |
|------------|------------|-------------|
| Records | Difficulty | Reliability |
| 346 | 3.3 | 92 |

MANAGEMENT

| | | | | |
|-------------|--------------|--------------|------------|---------------|
| Milk Speed | Temp | SCC | BCS | aAa Score |
| -0.5 | -0.01 | -0.23 | 0.2 | 432516 |

- Balance of Production and positive % protein
- Health improver

LINEAR EVALUATION - INTERBULL 2016

| | | -2 | +2 |
|----------------|------|----|----|
| STATURE | 0.9 | | |
| CHEST WIDTH | 0.2 | | |
| BODY DEPTH | 0.4 | | |
| ANGULARITY | 0.5 | | |
| RUMP ANGLE | 0.6 | | |
| RUMP WIDTH | 0.2 | | |
| REAR LEG SET | -1.8 | | |
| LOCOMOTION | 1.3 | | |
| FOOT ANGLE | 1.4 | | |
| FORE UDDER | 1.3 | | |
| REAR UDDER | 1.3 | | |
| UDDER SUPPORT | 1.3 | | |
| UDDER DEPTH | 0.9 | | |
| TEAT PLACEMENT | 1.4 | | |
| TEAT LENGTH | 0 | | |
| OVERALL TYPE | 1.8 | | |
| OVERALL UDDER | 1.7 | | |
| OVERALL F&L | 2 | | |

SIRE: DELTA G-FORCE

MS: BEEKMANSHOEVE BERTIL

MGS: DELTA CANVAS

DAM: HORST MAISTEIN 110

MD: HORST MAISTEIN 70

MGD: HORST MAISTEIN 43

FR4187 WESTCOAST PERSEUS

DOB: 05-DEC-2015

HB No. HOLCANM000012283318

NEW



Dam



| EBI DEC. 2016 | REL | 10% | BOTTOM 20% | 30% | 40% | MEAN | 40% | 30% | TOP 20% | 10% |
|---------------------|-----|-----|---------------|-----|-----|------|-----|-----|------------|-----|
| EBI 182 | 63% | | | | | | | | | |
| Prod. SI 88 | 72% | | | | | | | | | |
| Fert. SI 44 | 63% | | | | | | | | | |
| Calv. SI 39 | 74% | | | | | | | | | |
| Beef. SI -2 | 46% | | | | | | | | | |
| Maint. SI -7 | 45% | | | | | | | | | |
| Mgmt. SI 4 | 31% | | | | | | | | | |
| Health SI 17 | 56% | | | | | | | | | |

PRODUCTION

| Milk Kg | Fat Kg | Protein KG | Solid Kg | Fat % | Prot % |
|------------|-------------|-------------|-----------|--------------|-------------|
| 515 | 19.0 | 17.0 | 36 | -0.02 | 0.00 |

FERTILITY

| Calving Interval | Survival |
|------------------|-------------|
| 0.47 | 4.11 |

CALVING DIFFICULTY

| Records | Difficulty | Reliability |
|---------|------------|-------------|
| | | |

NO CALVING SURVEY

MANAGEMENT

| Milk Speed | Temp | SCC | BCS | aAa Score |
|-------------|-------------|--------------|-----------|---------------|
| -3.0 | 0.09 | -0.29 | -- | 126345 |

• Limited Semen



- One of the hottest genomic bulls in the world
- Over 4 points for type with the production to back it up

LINEAR EVALUATION - INTERBULL 2016

| | | -2 | +2 |
|----------------|------|----|----|
| STATURE | 2.6 | | |
| CHEST WIDTH | -0.1 | | |
| BODY DEPTH | 1.2 | | |
| ANGULARITY | 1.6 | | |
| RUMP ANGLE | 0.8 | | |
| RUMP WIDTH | 3.9 | | |
| REAR LEG SET | -2.0 | | |
| LOCOMOTION | 2.9 | | |
| FOOT ANGLE | 2.3 | | |
| FORE UDDER | 4.2 | | |
| REAR UDDER | 4.2 | | |
| UDDER SUPPORT | 4.3 | | |
| UDDER DEPTH | 3.8 | | |
| TEAT PLACEMENT | 2.6 | | |
| TEAT LENGTH | -1.1 | | |
| OVERALL TYPE | 4.4 | | |
| OVERALL UDDER | 4.0 | | |
| OVERALL F&L | 4.7 | | |

SIRE: SANDY-VALLEY-I PENMANSHIP

MS: VALL-BISSON DOORMAN

MGS: ROYLANE SOCRA ROBUST-ET

DAM: VIEW-HOME DRMAN WSCONIN-ET VG87 2YR

MD: PINE-TREE 2149ROBST 4846-ET VG86

MGD: PINE-TREE ZENITH SHEEN

PRE-ORDER

IRISH DTR PROVEN

S1137 GEN-I-BEQ LAVAMAN

DOB: 21/02/2010

HB No. HOLCANM000106363549



| EBI DEC. 2016 | | REL | 10% | 20% | 30% | 40% | MEAN | 40% | 30% | 20% | 10% |
|---------------|------------|-----|-----|-----|-----|-----|------|-----|-----|-----|-----|
| EBI | 140 | 85% | | | | | | | | | |
| Prod. SI | 90 | 91% | | | | | | | | | |
| Fert. SI | 28 | 87% | | | | | | | | | |
| Calv. SI | 35 | 92% | | | | | | | | | |
| Beef. SI | -10 | 88% | | | | | | | | | |
| Maint. SI | -12 | 57% | | | | | | | | | |
| Mgmt. SI | 3 | 47% | | | | | | | | | |
| Health SI | 5 | 82% | | | | | | | | | |

PRODUCTION

| | | | | | |
|------------|-------------|-------------|-----------|-------------|-------------|
| Milk Kg | Fat Kg | Protein KG | Solid Kg | Fat % | Prot % |
| 311 | 14.5 | 15.5 | 30 | 0.04 | 0.08 |

FERTILITY

| | |
|------------------|------------|
| Calving Interval | Survival |
| -0.9 | 1.4 |

CALVING DIFFICULTY

| | | |
|------------|------------|-------------|
| Records | Difficulty | Reliability |
| 639 | 2.5 | 95 |

MANAGEMENT

| | | | | |
|--------------|--------------|--------------|-------------|---------------|
| Milk Speed | Temp | SCC | BCS | aAa Score |
| -24.4 | -0.08 | -0.03 | -1.2 | 234156 |

• Limited availability

• Easy calving

• High components

LINEAR EVALUATION - INTERBULL 2016

| | | -2 | +2 |
|----------------|------|----|----|
| STATURE | 1.2 | | |
| CHEST WIDTH | -1.7 | | |
| BODY DEPTH | 0.3 | | |
| ANGULARITY | 1.7 | | |
| RUMP ANGLE | -1.5 | | |
| RUMP WIDTH | -0.1 | | |
| REAR LEG SET | -1.2 | | |
| LOCOMOTION | 3.6 | | |
| FOOT ANGLE | 2 | | |
| FORE UDDER | 1.5 | | |
| REAR UDDER | 3.1 | | |
| UDDER SUPPORT | 3.1 | | |
| UDDER DEPTH | 1.3 | | |
| TEAT PLACEMENT | 1.7 | | |
| TEAT LENGTH | -2.3 | | |
| OVERALL TYPE | 2.7 | | |
| OVERALL UDDER | 2 | | |
| OVERALL F&L | 2.7 | | |

SIRE: LONG-LANGS OMAN OMAN TV TL TY

MS: BRAEDALE GOLDWYN

MGS: REGANCREST ELTON DURHAM-ET

DAM: COMESTAR GOLDWYN LAVA

MD: LYLEHAVEN LILA Z

MGD: LYLEHAVEN FORM LAURA-ET

GXC GK CREAM

DOB: 07/09/2012

HB No. HOLNLDM000921103617



Dam



GDam



| EBI DEC. 2016 | | REL | 10% | 20% | 30% | 40% | MEAN | 40% | 30% | 20% | 10% |
|---------------|------------|-----|-----|-----|-----|-----|------|-----|-----|-----|-----|
| EBI | 181 | 61% | | | | | | | | | |
| Prod. SI | 59 | 73% | | | | | | | | | |
| Fert. SI | 103 | 60% | | | | | | | | | |
| Calv. SI | 23 | 87% | | | | | | | | | |
| Beef. SI | 3 | 40% | | | | | | | | | |
| Maint. SI | -13 | 37% | | | | | | | | | |
| Mgmt. SI | 1 | 10% | | | | | | | | | |
| Health SI | 7 | 52% | | | | | | | | | |

PRODUCTION

| | | | | | |
|------------|------------|-------------|-----------|--------------|-------------|
| Milk Kg | Fat Kg | Protein KG | Solid Kg | Fat % | Prot % |
| 342 | 9.7 | 11.9 | 22 | -0.06 | 0.01 |

FERTILITY

| | |
|------------------|------------|
| Calving Interval | Survival |
| -2.8 | 5.6 |

CALVING DIFFICULTY

| | | |
|------------|------------|-------------|
| Records | Difficulty | Reliability |
| 641 | 5.3 | 94 |

MANAGEMENT

| | | | | |
|-------------|--------------|--------------|------------|---------------|
| Milk Speed | Temp | SCC | BCS | aAa Score |
| -6.2 | -0.03 | -0.13 | 1.4 | 243156 |

- Great reports on stock
- Proof is on the up
- Super type, high protein

LINEAR EVALUATION - INTERBULL 2016

| | | -2 | +2 |
|----------------|------|----|----|
| STATURE | 1 | | |
| CHEST WIDTH | 0.9 | | |
| BODY DEPTH | -0.3 | | |
| ANGULARITY | 0.2 | | |
| RUMP ANGLE | 1 | | |
| RUMP WIDTH | 2.4 | | |
| REAR LEG SET | 1.1 | | |
| LOCOMOTION | 0.3 | | |
| FOOT ANGLE | 0.1 | | |
| FORE UDDER | 4.1 | | |
| REAR UDDER | 2.7 | | |
| UDDER SUPPORT | 2.9 | | |
| UDDER DEPTH | 3.1 | | |
| TEAT PLACEMENT | 1.3 | | |
| TEAT LENGTH | -2.9 | | |
| OVERALL TYPE | 2.5 | | |
| OVERALL UDDER | 3.1 | | |
| OVERALL F&L | 2.6 | | |

SIRE: O-COSMOPOLITAN-ET

MS: CHARLES. SUPERSTITION TV TL TY

MGS: YEAZLAND MARION-ET

DAM: DG SPR CREAMY VG85 2YR

MD: RALMA MARION CLASSIC ET EX91

MGD: RALMA CHRISTMAS COOKIE-ET VG89

FR4107 POPPE RED HOT DARREL RED

DOB: 06/02/2015

HB No. HOLNLD000660282554



Dam



| EBI DEC. 2016 | | REL | 10% | 20% | 30% | 40% | MEAN | 40% | 30% | 20% | 10% |
|---------------|------------|-----|-----|-----|-----|-----|------|-----|-----|-----|-----|
| EBI | 176 | 48% | | | | | | | | | |
| Prod. SI | 82 | 63% | | | | | | | | | |
| Fert. SI | 63 | 54% | | | | | | | | | |
| Calv. SI | 26 | 22% | | | | | | | | | |
| Beef. SI | -12 | 34% | | | | | | | | | |
| Maint. SI | 3 | 33% | | | | | | | | | |
| Mgmt. SI | 0 | 6% | | | | | | | | | |
| Health SI | 14 | 45% | | | | | | | | | |

PRODUCTION

| | | | | | |
|------------|-------------|-------------|-----------|-------------|-------------|
| Milk Kg | Fat Kg | Protein KG | Solid Kg | Fat % | Prot % |
| 413 | 17.2 | 15.2 | 32 | 0.01 | 0.02 |

FERTILITY

| | |
|------------------|------------|
| Calving Interval | Survival |
| -2.4 | 2.8 |

CALVING DIFFICULTY

| | | |
|---------|------------|-------------|
| Records | Difficulty | Reliability |
| | 3.2 | 24 |

MANAGEMENT

| | | | | |
|-------------|--------------|--------------|-----------|------------|
| Milk Speed | Temp | SCC | BCS | aAa Score |
| -6.1 | -0.04 | -0.21 | -1 | 324 |

- Super new production and type red bull
- High solids and positive components

LINEAR EVALUATION - INTERBULL 2016

| | | -2 | +2 |
|----------------|------|----|----|
| STATURE | 1.2 | | |
| CHEST WIDTH | -1 | | |
| BODY DEPTH | 0.2 | | |
| ANGULARITY | 1.5 | | |
| RUMP ANGLE | 1.3 | | |
| RUMP WIDTH | -0.1 | | |
| REAR LEG SET | -1.9 | | |
| LOCOMOTION | 1.7 | | |
| FOOT ANGLE | 2.6 | | |
| FORE UDDER | 2.4 | | |
| REAR UDDER | 2.7 | | |
| UDDER SUPPORT | 2.5 | | |
| UDDER DEPTH | 1.8 | | |
| TEAT PLACEMENT | 1.3 | | |
| TEAT LENGTH | -1.9 | | |
| OVERALL TYPE | 2.5 | | |
| OVERALL UDDER | 2.3 | | |
| OVERALL F&L | 2.3 | | |

SIRE: TEXEL BEAUTY DEBUTANT

MS: SNOW RF ET

MGS: JERUDO

DAM: POPPE RED HOT RITA 860 V687

MD: WILLEM'S HOEVE RITA 744 GP84

MGD: WILLEM'S HOEVE RITA 0438 V687

YKS STERK KISS KYTEMAN

DOB: 28/11/2013

HB No. HOLNLDM000920988859



Dam



| EBI DEC. 2016 | | REL | 10% | 20% | 30% | 40% | MEAN | 40% | 30% | 20% | 10% |
|---------------|------------|-----|-----|-----|-----|-----|------|-----|-----|-----|-----|
| EBI | 148 | 57% | | | | | | | | | |
| Prod. SI | 88 | 67% | | | | | | | | | |
| Fert. SI | 20 | 56% | | | | | | | | | |
| Calv. SI | 44 | 83% | | | | | | | | | |
| Beef. SI | -2 | 35% | | | | | | | | | |
| Maint. SI | -10 | 34% | | | | | | | | | |
| Mgmt. SI | 1 | 8% | | | | | | | | | |
| Health SI | 7 | 49% | | | | | | | | | |

PRODUCTION

| | | | | | |
|------------|-----------|-------------|-----------|-------------|-------------|
| Milk Kg | Fat Kg | Protein KG | Solid Kg | Fat % | Prot % |
| 423 | 22 | 15.6 | 38 | 0.08 | 0.02 |

FERTILITY

| | |
|------------------|------------|
| Calving Interval | Survival |
| 0.4 | 2.1 |

CALVING DIFFICULTY

| | | |
|------------|------------|-------------|
| Records | Difficulty | Reliability |
| 242 | 3.1 | 87 |

MANAGEMENT

| | | | | |
|------------|-------------|--------------|------------|------------|
| Milk Speed | Temp | SCC | BCS | aAa Score |
| 1.2 | 0.05 | -0.14 | 0.5 | 315 |

- Outcross Sire
- 38kgs Solids with positive components
- 2.5 Type from a high protein cow family

LINEAR EVALUATION - INTERBULL 2016

| | | -2 | +2 |
|----------------|------|----|----|
| STATURE | 0.4 | | |
| CHEST WIDTH | 1 | | |
| BODY DEPTH | 0.3 | | |
| ANGULARITY | -0.1 | | |
| RUMP ANGLE | -0.2 | | |
| RUMP WIDTH | 0.5 | | |
| REAR LEG SET | -2.9 | | |
| LOCOMOTION | 2.5 | | |
| FOOT ANGLE | 1.7 | | |
| FORE UDDER | 1.9 | | |
| REAR UDDER | 2 | | |
| UDDER SUPPORT | 2.6 | | |
| UDDER DEPTH | 0.9 | | |
| TEAT PLACEMENT | 1.7 | | |
| TEAT LENGTH | 2.3 | | |
| OVERALL TYPE | 2.5 | | |
| OVERALL UDDER | 1.6 | | |
| OVERALL F&L | 2.4 | | |

SIRE: GEN-I-BEQ AIKMAN

MS: LAESCHWAY JET BOWSER-ET

MGS: PICSTON SHOTTLE

DAM: VENERIETE BOWSER IDA 47 VG

MD: VENERIETE SHOTTLE IDA 6 VG88

MGD: BUTEMARE VENERIETE IDA 0

S2209 TEXEL BEAUTY DEBUTANT

DOB: 27/08/2012

HB No. REDNLDM000762769560



| EBI DEC. 2016 | | REL | 10% | 20% | 30% | 40% | MEAN | 40% | 30% | 20% | 10% |
|---------------|------------|-----|-----|-----|-----|-----|------|-----|-----|-----|-----|
| EBI | 159 | 53% | | | | | | | | | |
| Prod. SI | 63 | 67% | | | | | | | | | |
| Fert. SI | 72 | 53% | | | | | | | | | |
| Calv. SI | 25 | 82% | | | | | | | | | |
| Beef. SI | -6 | 22% | | | | | | | | | |
| Maint. SI | -7 | 15% | | | | | | | | | |
| Mgmt. SI | 1 | 12% | | | | | | | | | |
| Health SI | 10 | 48% | | | | | | | | | |

PRODUCTION

| | | | | | |
|------------|-------------|------------|-----------|-------------|-------------|
| Milk Kg | Fat Kg | Protein KG | Solid Kg | Fat % | Prot % |
| 364 | 15.3 | 12 | 27 | 0.01 | 0.00 |

FERTILITY

| | |
|------------------|------------|
| Calving Interval | Survival |
| -2.3 | 3.7 |

CALVING DIFFICULTY

| | | |
|---------|------------|-------------|
| Records | Difficulty | Reliability |
| | 2.7 | 92 |

MANAGEMENT

| | | | | |
|-------------|--------------|--------------|-----------|---------------|
| Milk Speed | Temp | SCC | BCS | aAa Score |
| -9.2 | -0.05 | -0.14 | -1 | 243615 |

• Outcross pedigree from the Roxy family

• Balanced bull with production, fertility & type

• Health improver

LINEAR EVALUATION - INTERBULL 2016

| | | -2 | +2 |
|----------------|------|----|----|
| STATURE | 1.6 | | |
| CHEST WIDTH | -1.6 | | |
| BODY DEPTH | -1.1 | | |
| ANGULARITY | 1.2 | | |
| RUMP ANGLE | -0.3 | | |
| RUMP WIDTH | 0.4 | | |
| REAR LEG SET | -0.7 | | |
| LOCOMOTION | 1.4 | | |
| FOOT ANGLE | 1.7 | | |
| FORE UDDER | 1.7 | | |
| REAR UDDER | 2.2 | | |
| UDDER SUPPORT | 2.4 | | |
| UDDER DEPTH | 1.7 | | |
| TEAT PLACEMENT | 1.6 | | |
| TEAT LENGTH | 0.7 | | |
| OVERALL TYPE | 2.2 | | |
| OVERALL UDDER | 2 | | |
| OVERALL F&L | 2.1 | | |

SIRE: KINGS-RANSOM 0 DAKKER-ET

MS: CHARLES. SUPERSTITION TV TL TY

MGS: BRAEDALE GOLDWYN

DAM: TEXEL BEAUTY DESIRE

MD: SCIENTIFIC GOLD DISH RAE EX90

MGD: SCIENTIFIC DEBUTANTE RAE EX92

S1488 VAL-BISSON DOORMAN

DOB: 06/08/2011

HB No. HOLCANM000107281711



| EBI DEC. 2016 | | REL | 10% | 20% | 30% | 40% | MEAN | 40% | 30% | 20% | 10% |
|---------------|------------|-----|-----|-----|-----|-----|------|-----|-----|-----|-----|
| EBI | 90 | 75% | | | | | | | | | |
| Prod. SI | 55 | 79% | | | | | | | | | |
| Fert. SI | -12 | 80% | | | | | | | | | |
| Calv. SI | 31 | 86% | | | | | | | | | |
| Beef. SI | -1 | 69% | | | | | | | | | |
| Maint. SI | -3 | 49% | | | | | | | | | |
| Mgmt. SI | 3 | 20% | | | | | | | | | |
| Health SI | 17 | 72% | | | | | | | | | |

PRODUCTION

| | | | | | |
|------------|-------------|-------------|-----------|-------------|-------------|
| Milk Kg | Fat Kg | Protein KG | Solid Kg | Fat % | Prot % |
| 292 | 12.2 | 10.3 | 22 | 0.01 | 0.01 |

FERTILITY

| | |
|------------------|------------|
| Calving Interval | Survival |
| 2.3 | 1.5 |

CALVING DIFFICULTY

| | | |
|------------|------------|-------------|
| Records | Difficulty | Reliability |
| 381 | 3.6 | 92 |

MANAGEMENT

| | | | | |
|-------------|-------------|-------------|-------------|---------------|
| Milk Speed | Temp | SCC | BCS | aAa Score |
| -1.6 | 0.07 | -0.3 | -0.5 | 234615 |

SIRE: DE-SU 521 BOOKEM-ET

MS: PICSTON SHUTTLE

MGS: BRAEDALE GOLDWYN

DAM: VAL-BISSON SHUTTLE IMELDA

MD: VAL-BISSON GOLDWYN MAYA

MGD: VAL-BISSON FINLEY DREAM

• **Type sensation**

• Great health traits and positive components

LINEAR EVALUATION - INTERBULL 2016

| | | -2 | +2 |
|----------------|------|----|----|
| STATURE | 3 | | |
| CHEST WIDTH | 1.9 | | |
| BODY DEPTH | 3 | | |
| ANGULARITY | 1.8 | | |
| RUMP ANGLE | -1.5 | | |
| RUMP WIDTH | 3.9 | | |
| REAR LEG SET | -0.5 | | |
| LOCOMOTION | 3.5 | | |
| FOOT ANGLE | 1.8 | | |
| FORE UDDER | 4.3 | | |
| REAR UDDER | 3.6 | | |
| UDDER SUPPORT | 2.8 | | |
| UDDER DEPTH | 3.2 | | |
| TEAT PLACEMENT | 2.8 | | |
| TEAT LENGTH | -0.3 | | |
| OVERALL TYPE | 3.8 | | |
| OVERALL UDDER | 3.2 | | |
| OVERALL F&L | 3.4 | | |

S2173 VIEUXSAULE FLAME-ET

DOB: 28/04/2012

HB No. HOLUSAM000071699265



| EBI DEC. 2016 | REL | 10% | 20% | 30% | 40% | MEAN | 40% | 30% | 20% | 10% |
|----------------------|-----|-----|-----|-----|-----|------|-----|-----|-----|-----|
| EBI 130 | 61% | | | | | | | | | |
| Prod. SI 42 | 69% | | | | | | | | | |
| Fert. SI 65 | 62% | | | | | | | | | |
| Calv. SI 28 | 86% | | | | | | | | | |
| Beef. SI 2 | 42% | | | | | | | | | |
| Maint. SI -20 | 37% | | | | | | | | | |
| Mgmt. SI 5 | 13% | | | | | | | | | |
| Health SI 8 | 52% | | | | | | | | | |

PRODUCTION

| Milk Kg | Fat Kg | Protein KG | Solid Kg | Fat % | Prot % |
|------------|-------------|------------|-----------|-------------|-------------|
| 132 | 16.4 | 5.6 | 22 | 0.19 | 0.02 |

FERTILITY

| Calving Interval | Survival |
|------------------|------------|
| -1.9 | 3.5 |

CALVING DIFFICULTY

| Records | Difficulty | Reliability |
|------------|------------|-------------|
| 362 | 4.6 | 91 |

MANAGEMENT

| Milk Speed | Temp | SCC | BCS | aAa Score |
|-------------|-------------|--------------|-------------|---------------|
| -7.4 | 0.09 | -0.07 | -0.9 | 324165 |

- International sire of sons
- Super type positive components

LINEAR EVALUATION - INTERBULL 2016

| | | -2 | +2 |
|----------------|------|----|----|
| STATURE | 2.3 | | |
| CHEST WIDTH | 0.3 | | |
| BODY DEPTH | 1.3 | | |
| ANGULARITY | 1.9 | | |
| RUMP ANGLE | -0.6 | | |
| RUMP WIDTH | 4.3 | | |
| REAR LEG SET | -0.4 | | |
| LOCOMOTION | 2.2 | | |
| FOOT ANGLE | 2 | | |
| FORE UDDER | 2.7 | | |
| REAR UDDER | 2.9 | | |
| UDDER SUPPORT | 3 | | |
| UDDER DEPTH | 1.9 | | |
| TEAT PLACEMENT | 1.9 | | |
| TEAT LENGTH | 0.3 | | |
| OVERALL TYPE | 3.2 | | |
| OVERALL UDDER | 2.7 | | |
| OVERALL F&L | 3 | | |

SIRE: AMIGHETTI NUMERO UNO TV TL TY

MS: BADGER-BLUFF FANNY FREDDIE

MGS: SANDY-VALLEY BOLTON-ET

DAM: VIEUXSAULE FREDDIE FELICIA VG

MD: VIEUXSAULE BOLTON HALIA VG87

MGD: VIEUXSAULE ALLEN DRAGONFLY EX94

Jersey Bulls

GUIMO JOEL

DOB: 18-MAY-2011



- +16 final class
- Daughter proven
- Super all-rounder

| aAa | Beta Casein |
|--------|-------------|
| 645231 | A2A2 |

PRODUCTION

| Herts | Dtrs | Reliability |
|---------|------------|-------------|
| 119 | 179 | 95% |
| Milk Kg | Solid Kg | |
| 310 | 49 | |
| Fat Kg | Protein KG | |
| 25 | 24 | |
| Fat % | Prot % | |
| 0.13 | 0.18 | |

Daughter Average [ME] Milk **7,962 kg** Fat **401 kg** Protein **307 kg**

HEALTH & REPRODUCTION

| | | | |
|--------------------|-----|---------------------|-----|
| Herd Life | 105 | Milking Speed | 108 |
| Daughter Fertility | 103 | Milking Temperament | 101 |

CONFORMATION

| | | | |
|----------------------------|----|-----------------|----|
| 88 Herds 139 Daughters 89% | | Rel GEBV 16*DEC | |
| Conformation | 16 | Dairy Strength | 12 |
| Mammary System | 15 | Rump | 9 |
| Feet & Legs | 14 | GP or Better % | 86 |



Sire: TOLLENAARS IMPULS LEGAL 233-ET
G Sire: Q IMPULS
GD Sire: SKAE IDE

S2089 VJ HILARIO

DOB: 09/10/2009



| EBI DEC. 2016 | REL | 10% | 20% | 30% | 40% | MEAN | 40% | 30% | 20% | 10% |
|---------------------|-----|-----|-----|-----|-----|------|-----|-----|-----|-----|
| EBI 131 | 53% | | | | | | | | | |
| Prod. SI 36 | 69% | | | | | | | | | |
| Fert. SI 75 | 59% | | | | | | | | | |
| Calv. SI -11 | 74% | | | | | | | | | |
| Beef. SI -72 | 19% | | | | | | | | | |
| Maint. SI 96 | 15% | | | | | | | | | |
| Mgmt. SI 7 | 10% | | | | | | | | | |
| Health SI 1 | 3% | | | | | | | | | |

PRODUCTION

| Milk Kg | Solid Kg |
|---------|------------|
| -248 | 11 |
| Fat Kg | Protein KG |
| 11 | 0 |
| Fat % | Prot % |
| 0.37 | 0.16 |

FERTILITY

| Calving Interval | Survival |
|------------------|----------|
| -2.9 | 3.3 |

MANAGEMENT

| Time | Temp | SCC | BCS |
|------|------|-----|-----|
| -3.2 | 0.17 | 0 | 0 |

CALVING DIFFICULTY

| Records | Difficulty | Reliability |
|---------|------------|-------------|
| 127 | 2.3 | 78% |

- +19 NTM
- Massive 120 Dtr Fertility in Denmark
- +114 for Longevity
- Super Udder, Feet, Legs



Sire: Q HIRSE
G Sire: Q IMPULS
GD Sire: FYN LEMVIG

S2087 VJ HUSKY

DOB: 13/09/2009



| EBI DEC. 2016 | REL | 10% | 20% | 30% | 40% | MEAN | 40% | 30% | 20% | 10% |
|---------------------|-----|-----|-----|-----|-----|------|-----|-----|-----|-----|
| EBI 100 | 56% | | | | | | | | | |
| Prod. SI 55 | 70% | | | | | | | | | |
| Fert. SI 22 | 62% | | | | | | | | | |
| Calv. SI -10 | 80% | | | | | | | | | |
| Beef. SI -61 | 19% | | | | | | | | | |
| Maint. SI 86 | 14% | | | | | | | | | |
| Mgmt. SI 6 | 18% | | | | | | | | | |
| Health SI 2 | 18% | | | | | | | | | |

PRODUCTION

| Milk Kg | Solid Kg |
|---------|------------|
| -263 | 17 |
| Fat Kg | Protein KG |
| 15 | 2 |
| Fat % | Prot % |
| 0.47 | 0.21 |

FERTILITY

| Calving Interval | Survival |
|------------------|----------|
| 0.4 | 2.3 |

MANAGEMENT

| Time | Temp | SCC | BCS |
|------|------|-----|-----|
| -9.6 | 0.12 | 0 | - |

CALVING DIFFICULTY

| Records | Difficulty | Reliability |
|---------|------------|-------------|
| 202 | 2.6 | 85% |

- 120 Production Index in Denmark
- Improves size and udders



Sire: DJ HULK
G Sire: DJ MAY
GD Sire: Q IMPULS

A.I on maiden heifers is money well spent

Security at Calving

- Accurate Easy Calving figures
- Heifers hit the ground running
- Will go back in-calf easier

Heifers are your best genetics

They should have higher conception rates
Increases the number of possible replacements

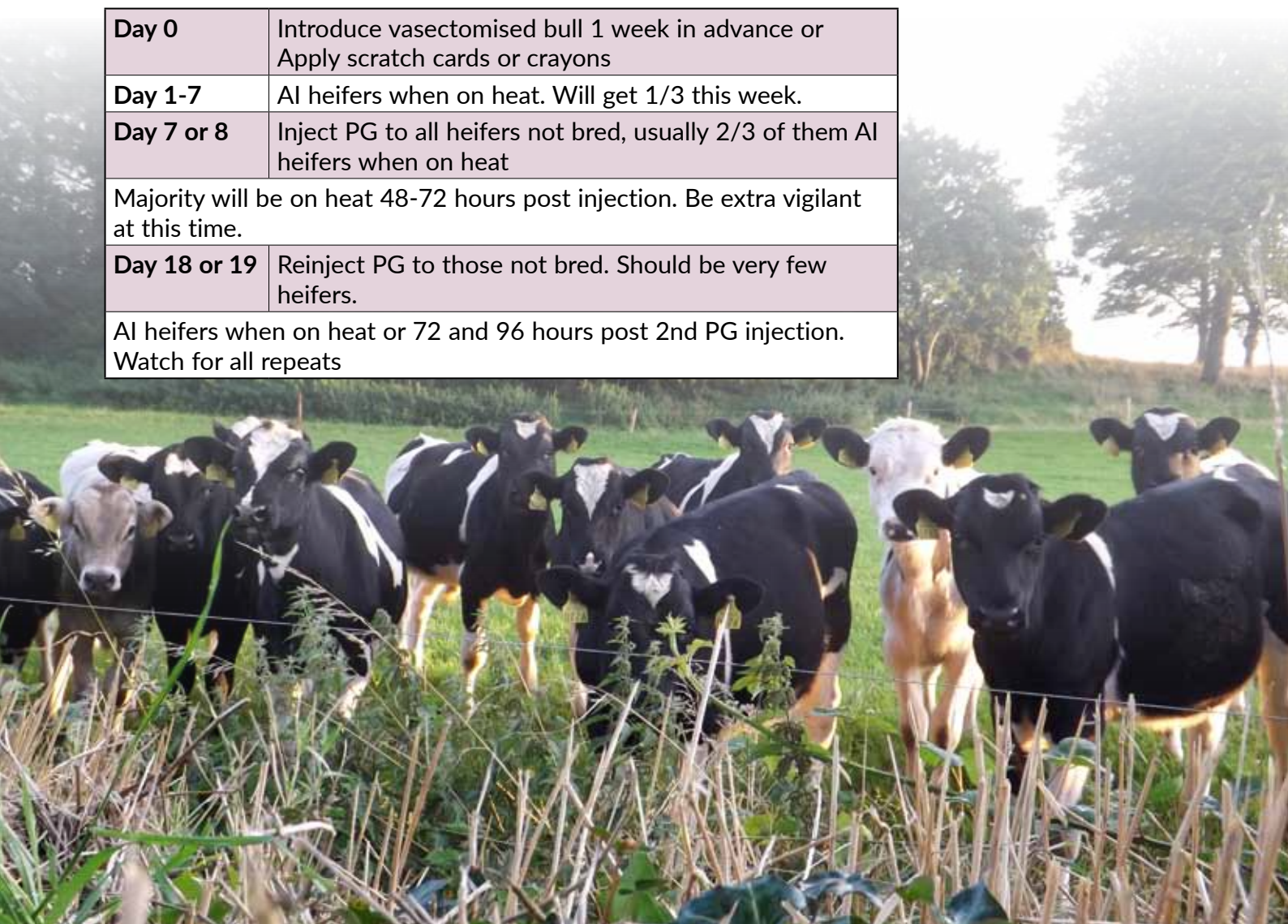
Get your Heifers bred quickly & easily: Simple, reliable sync program

Bulls to use

| | |
|---------------|------------|
| FR2028 | Raphael |
| S3136 | Armour |
| S1137 | Lavaman |
| HZB | Pat |
| FR2235 | Spice |
| FR2001 | Rattigan |
| FR2262 | Penmanship |

Synchronisation Programme for maiden heifers

| | |
|--|--|
| Day 0 | Introduce vasectomised bull 1 week in advance or Apply scratch cards or crayons |
| Day 1-7 | AI heifers when on heat. Will get 1/3 this week. |
| Day 7 or 8 | Inject PG to all heifers not bred, usually 2/3 of them AI heifers when on heat |
| Majority will be on heat 48-72 hours post injection. Be extra vigilant at this time. | |
| Day 18 or 19 | Reinject PG to those not bred. Should be very few heifers. |
| AI heifers when on heat or 72 and 96 hours post 2nd PG injection. Watch for all repeats | |



Munster's Beef on Dairy Programme

Realise the Potential in Munster Beef

Munster has a specific beef on dairy breeding programme for Angus, Hereford, Belgian Blue, Limousin and Simmental to address the needs of dairy herdowners.

Essential traits in beef sires for dairy herds.

- **Calving Ease.**
 - Importance is that difficult calving's ties up labour time and reduces subsequent fertility. AA2025 & KYA have less than 1% calving difficulty at 99% reliability.
- **Short Gestation.**
 - Most beef sires are used in the 2nd and subsequent services, these late march and April calving cows need a short gestation sire to get increase their days in milk. KYA is 4.52 days shorter than your average bull.
- **Calf quality.**
 - This maximises the price achieved for the young calf. HE2043 & RGZ maximise calf price.
- **Polledness.**
 - Reduces the need for dehorning.
- **Colour.**
 - This maximises the price achieved for the young calf
- **Vigour at birth**
 - This ensures maximum survival rates.

Carcass Trait Requirements for beef animals from dairy herds. Market for calves to Finishers.

With the increasing number of beef calves from the dairy herd and the Angus & Hereford schemes, the Munster beef on dairy programme in addition to the above traits are identifying sires that will deliver the required carcass traits. The challenge is to meet these market specification with easy calving short gestation genetics. Partnerships between the dairy herd producers of calves and the finishers can be developed.

The following are the carcass market specifications.

Conformation of a minimum O= or greater

Fat score of a 2+ to 4=

Carcass weight ideally 280 – 320 kg

Minimum carcass weight for bonus scheme of 220 kg for a heifer and 230 kg for a steer

Maximum carcass weight 380 kg for breed bonus

RGZ is the ideal Angus sire for finishing cattle from the dairy herd. HE2043 and KKO are the ideal Hereford sires for finishing cattle from the dairy herd.

BDGP Scheme. Market for Suckler Replacements.

Suckler herdowners in the BDGP scheme require 20% of their females to be 4 & 5 star for replacement value by October 2018 and 50% to be 4 & 5 star by October 2020.

Beef heifers from the dairy herd are ideal for fulfilling this requirement.

Lm2117 and ZAG are the two Limousin sires, SI2152 the Simmental that are ideal for the production of suckler replacements from the dairy herd.



Beef for the Dairy Herd

KYA CORNAMUCKLA LORD HARDY K222

DOB: 2010

HB No. AANIRLM121213180222



- Very easy calving, suitable for maiden heifers; 0.9% calving difficulty (Rel 99%)
- Super calf quality
- Five star on Replacement Index
- The dream bull for dairy heifers

| Calving diff. % | Rel. | No. of Records | Gest PTA | Rel. | Gestation days |
|-------------------|------|----------------------------------|-------------------|------|-------------------|
| (Breed avg: 2.17) | | | (Breed avg: 0.85) | | (Breed avg: 284d) |
| 0.7% | 99% | 29269 | -4.52 | 99% | 280 |
| Carcass Wgt | Rel. | Replacement Index (across breed) | | Rel. | |
| -1kgs | 99% | ★★★★★ | | 86% | |

KCBF JANUARY 2017

TIVANAGH BARON
CARTONROE ERNIE
CARTON-ROE PAULINE
SUNSET ACRES BANG
DRUMCROW LADY HILDA
LADY OF HADDO OF LAWSONSFORD

SPL SOLPOLL 1 HANDSOME {HYC}

DOB: 16/09/2010

HB No. HERGBRM933001325282



- Easy calving on cows 3.3% @ 99% reliability
- Homozygous polled – all the progeny are polled, no need to dehorn
- Good colour markings, Lively at birth
- Not for pedigree breeding

| Calving diff. % | Rel. | No. of Records | Gest PTA | Rel. | Gestation days |
|-------------------|------|----------------------------------|-------------------|------|-------------------|
| (Breed avg: 3.95) | | | (Breed avg: 1.75) | | (Breed avg: 284d) |
| 3.3% | 99% | 9906 | 0.43 | 99% | 285 |
| Carcass Wgt | Rel. | Replacement Index (across breed) | | Rel. | |
| +2kgs | 99% | ★★★★★ | | 67% | |

KCBF JANUARY 2017

FISHER 1 WELLINGTON WY1
FISHER 1 CHARLIE
FISHER 1 CLOVER W86
UDEL 1 R51 VINDICATOR
SOLPOLL 1 STARLET C3
SOLPOLL 1 STARLET R33

HE2043 SOLPOLL 1 KENTUCKY KID PP (HYF)

DOB: 02/04/2013

HB No. HERGBRM933001327113



- The best Hereford bull available for dairy cows
- Easy calving on cows, 3.9% @ 92% rel
- Very short gestation,
- Super calf quality –great shape

| Calving diff. % | Rel. | No. of Records | Gest PTA | Rel. | Gestation days |
|-------------------|------|----------------------------------|-------------------|------|-------------------|
| (Breed avg: 3.95) | | | (Breed avg: 1.75) | | (Breed avg: 284d) |
| 3.9% | 92% | 422 | -0.73 | 98% | 284 |
| Carcass Wgt | Rel. | Replacement Index (across breed) | | Rel. | |
| +6kgs | 35% | ★★★★★ | | 38% | |

KCBF JANUARY 2017

ROMANY 1 DISTILLER AB4 D53
PANMURE 1 HENRY
PANMURE 1 PLUM E2
SOLPOLL 1 CANTONA
SOLPOLL 1 STARLET E16
SOLPOLL 1 STARLET B1

DBZ MANITOU DE BELLE EAU

DOB: 12/03/2009

HB No. BBLBELM00098783140



- Progeny are of exceptional quality
- Well colour marked calves, born on time
- Use on mature cows only

| Calving diff. % | Rel. | No. of Records | Gest PTA | Rel. | Gestation days |
|--------------------|------|----------------------------------|-------------------|------|-------------------|
| (Breed avg: 12.81) | | | (Breed avg: 0.75) | | (Breed avg: 284d) |
| 8.4% | 99% | 12772 | 0.08 | 99% | 285 |
| Carcass Wgt | Rel. | Replacement Index (across breed) | | Rel. | |
| +23kgs | 99% | ★★ | | 83% | |

KCBF JANUARY 2017

DAFYD D'OCHAIN
IMPAIR DE COBREVILLE
GIFAFLE DE COBREVILLE
HARI ET 1602 DE BEAURAING
INEGALLEE DE BELLE EAU
GAFFEUSE DE BELLE EAU

Pregnancy Testing



- ▶ **Simple** - from your Milk Recording samples
- ▶ **Easy** - no extra work
- ▶ **Highly accurate**
- ▶ **No handling of cows**
- ▶ **Whole herd & individual** cow testing available
- ▶ **€3.60 per sample**



Cows
need to be
inseminated
30
days

SIGN UP

Call 022 43228

Herd Health

The cost of Disease?

Teagasc have found

- ▶ IBR positive unvaccinated herds had 250 litres less milk per cow
- ▶ Salmonella positive unvaccinated herds had a yearly loss of €94/cow
- ▶ Lepto positive unvaccinated herds had a yearly loss of €12/cow
- ▶ Neospora positive herds had a yearly loss of €12/cow

- ▶ Do you know the cost of disease on your farm?
- ▶ Munster Herd health schemes test for 10 different diseases that can financially hurt your farm
- ▶ Know your herd status to plan for higher profits

Milk Recording

Herd Profitability



Manage your SCC



Stock Value



Field the Best Team



Reduce Antibiotic use



Breeding Decisions



Lactose Management



Pregnancy Testing



Johne's Testing

Milk Recording a **Convenient Service**



- No paperwork required.
- No milk meters or jars required - EDIY
- We will use your own existing equipment - Manual
- Trained technician to help with the EDIY milk recording service.
- Payment by instalments in mid and late lactation.

Sign up Today Tel 022 43228

AI Technician Service



- ▶ **Highly trained, fully qualified and experienced staff**
- ▶ **Reliable and flexible**
- ▶ Covering your **local area**
- ▶ **Hi Tech** handhelds with your information at the touch of a button
- ▶ Use of handhelds ensures **no inbreeding**
- ▶ **Year round service**
- ▶ **Best value in the market**



AI Calls Dairygold:
1850 500 321

Bandon:
023 - 8832828

Kerry/Clare & Galway:
1890 28 1000

Heat Detection Aids



E-alert heat patches
(available in packs of 10, 25, 50)



Paintsticks (12 per box)



Roll of 100 E-alert patches plus glue



Marking block

Ukal bull harness
(for vasectomised bull)



CHINBALL HARNESS
(for vasectomised bull)
2.5L paint for harness



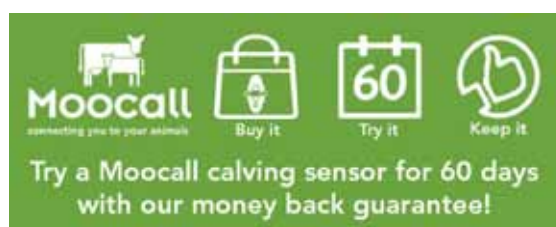
Increase live births & farm profitability

Be more productive on your farm

Moocall monitors your herd so you can spend your time doing the things that matter most on your farm. Our motion sensor technology accurately detects the onset of calving notifying you approx. 1hr prior to calving. No need to keep checking on that heifer, we'll let you know when she needs you.



Call your local Munser Rep or Technician to order





HIGHER QUALITY COLOSTRUM



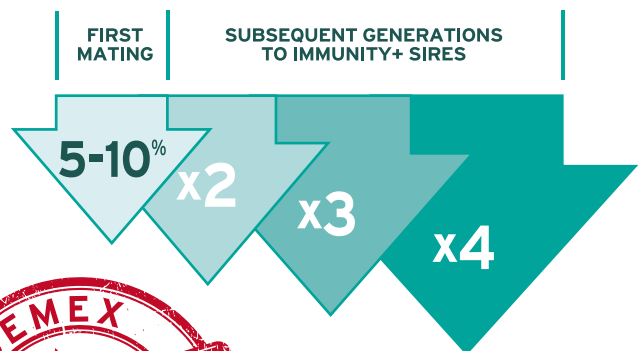
Immunity+ Daughters Have Higher Quality Colostrum

High immune cows have significantly more total immunoglobulin and betalactoglobulin in colostrum

Fleming et al 2014.

DISEASE RESISTANCE

Less disease for each generation



HIGHER FERTILITY

High Immunity = Better Health = Higher Fertility



Higher semen fertility

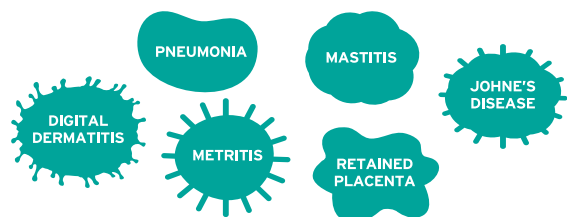
+0.4 higher SCR than other bulls

CDCB proof data, April 2016.

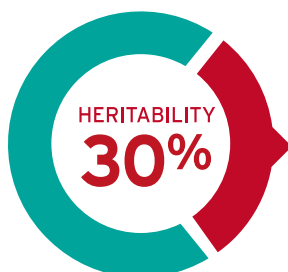


BROAD-BASED DEFENSE

against most viral and bacterial pathogens



HERITABILITY



Production Traits 25-35%
Conformation Traits 15-40%
Immune Response 30%
Longevity 8-10%
Calving Ease Traits 6-7%
Daughter Fertility 4-7%
Disease Incidence 2-10%

IMMUNE RESPONSE HAS
+0.5 - +0.7 GENETIC CORRELATION
WITH HEALTH/FITNESS TRAITS*



*Productive Life, SCS and DPR.

© 2016

THE BEST WAY TO FIGHT DISEASE



Sexed Semen List

| Name | Display Name | Bull Breed | Name | Display Name | Bull Breed |
|----------|----------------------------------|------------|----------|--------------------------------|------------|
| AY2374-S | KAMOURSKA DECAF (SEXED) | Ayrshire | S1664-S | GEHRKE JOHAN DERAY (SEXED) | Holstein |
| FR4014-S | DEANGATE QUAICH (SEXED) | Friesian | S1665-S | SCIENTIFIC DARYL-ET (SEXED) | Holstein |
| YFF-S | COLLYCROFT SOLO (SEXED) | Friesian | S2173-S | VIEUXSAULE FLAME-ET (SEXED) | Holstein |
| AAC-S | (IG) CURTIS ADDI (SEXED) | Holstein | S3119-S | JK EDER-I CONTROL (SEXED) | Holstein |
| FR2028-S | (IG) GOLDENFIELD RAPHAEL (SEXED) | Holstein | S3133-S | TOC-FARM FITZ ET (SEXED) | Holstein |
| FR2041-S | CURRA ROYAL CONOR (SEXED) | Holstein | S3136-S | BOLDI V ARMOUR (SEXED) | Holstein |
| FR2094-S | WALNUTLAWN SOLOMON (SEXED) | Holstein | TXZ-S | PINE-TREE SID-ET (SEXED) | Holstein |
| FR2095-S | DENMIRE MESDOOR (SEXED) | Holstein | WWT-S | (IG) WATERWHEEL TAURUS (SEXED) | Holstein |
| FR2233-S | (IG) TAMARIU HAROLD (SEXED) | Holstein | BHW-S | (IG) BALLYHOOLY MISTER (SEXED) | Jersey |
| FR2256-S | ABS CRAYON (SEXED) | Holstein | JE2352-S | WHITE STAR GREG (SEXED) | Jersey |
| FR2257-S | TOPCROFT PESKY TRIX (SEXED) | Holstein | S2297-S | GUIMO JOEL ET (SEXED) | Jersey |
| FR2270-S | BOLDI ADMIRATION (SEXED) | Holstein | S2089 | VJ HILARIO (SEXED) | Jersey |
| FR2297-S | (IG) CASTLEBLAGH RONNIE (SEXED) | Holstein | S2087 | VJ HUSKY (SEXED) | Jersey |
| FR4107-S | POPPE RED HOT DARREL RED (SEXED) | Holstein | JE2097 | VJ JERN (SEXED) | Jersey |
| OPL-S | CURRA PLUTO (SEXED) | Holstein | JE4136 | VJ GYVEL (SEXED) | Jersey |
| ROF-S | RALMA O-MAN CF CRICKET (SEXED) | Holstein | JE4137 | VJ HUUS (SEXED) | Jersey |
| S1579-S | WELCOME ARMITAGE PESKY (SEXED) | Holstein | S2112-S | MARCELLO (SEXED) | MRI |

Quantities vary.
ORDER EARLY
 to avoid disappointment.

Top TPI & LPI Sires

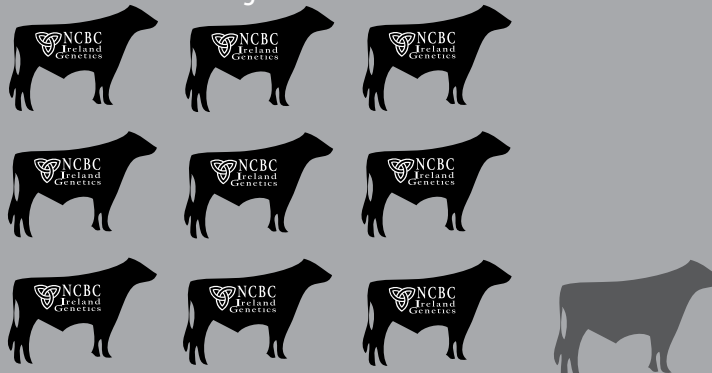
| | Name | TPI | Type | Udder | F&L | Pedigree |
|------------------|-------------------------------|------|------|-------|-----|-------------------------|
| U.S. FIGURES | ABS De-Su 13181 Quantum | 2784 | 1.9 | 1.9 | 1.0 | Supershot x Mogul |
| | ABS DG Charley | 2759 | 1.4 | 1.3 | 1.0 | Supershot x Mogul |
| | ABS De-Su 13050 Spectre | 2744 | 1.9 | 1.4 | 1.1 | Yoder x Supersire |
| | ABS Pine-Tree Verona | 2728 | 1.8 | 1.7 | 1.4 | Altaspring x Supersire |
| | ABS ABS Mayday | 2662 | 1.7 | 1.7 | 1.2 | Tailor x Balisto |
| | ABS Seagull-Bay Silver | 2649 | 2.5 | 2.0 | 2.6 | Mogul x Snowman |
| | ABS Larcrest Calumet | 2569 | 2.9 | 2.7 | 2.2 | Monterey x Uno |
| | ABS Bryceholme SS Boastful | 2567 | 1.5 | 1.6 | 0.8 | Supersire x Man-Oman |
| | ABS Larcrest Commander | 2531 | 2.6 | 2.5 | 1.9 | Mogul x Observer |
| | ABS Larcrest Commend | 2458 | 1.2 | 1.3 | 1.1 | Ballisto x Robust |
| | Semex Sandy-Valley Saloon | 2637 | 2.9 | 1.7 | 1.6 | Altaiota x Planet |
| | Name | LPI | Type | Udder | F&L | Pedigree |
| CANADIAN FIGURES | Semex Stantons Applicable | 3471 | 17 | 19 | 14 | Silver x McCuthen |
| | Semex Siemers Bloomfield | 3400 | 12 | 13 | 7 | Delta x Uno |
| | Semex Oconnors Classic | 3370 | 18 | 18 | 16 | Alta1stClass x McCuthen |
| | Semex Morningview Upright | 3220 | 13 | 13 | 8 | Kingboy x Uno |
| | Semex Val-Bisson Doorman | 3190 | 18 | 15 | 13 | Bookem x Shottle |
| | Semex KH Cinderdoor | 3082 | 17 | 13 | 12 | Doorman x Altaiota |
| | Semex Sandy-Valley Penmanship | 3068 | 6 | 4 | 6 | Enforcer x Uno |
| | Semex Toc-Farm Fitz | 3007 | 17 | 13 | 13 | Doorman x Snowman |
| | Semex DG Calando | 2935 | 11 | 11 | 10 | Mogul x Observer |
| | Semex Walnutlawn Solomon | 2807 | 18 | 16 | 12 | Doorman x Lavanguard |

Limited Availability order in time



Home to 9 of the top 10 most used Dairy A.I. Sires

Based on 2015 calf registrations - Source ICBF



OUR TEAM

NCBC operating Munster Cattle Breeding Group's Breeding Programme



Area Managers. *For breeding advice & technician service queries.*



Ray Hunt
086 8354788
*South Tipperary, East
Clare, North Cork*



Jerome Leen
087 2529895
Kerry, North Cork



Eustace Burke
086 0274558
South Cork



Michael Clohessy
086 6054723
Limerick



Joe O'Flynn
086 4030646
*North Cork,
Cork City North*



Declan Keating
086 8164024
West Cork



Brendan Scully
086 4126727
*East Cork, West
Waterford,*



Enda O'Gorman
086 8352700
West Clare, Galway

Breeding Advisors.



Johnny Carroll
086 2330881
East Waterford



Sonny O'Leary
086 2506418
West Cork



Joe Tobin
086 8125441
*East Cork, West Waterford,
Tipperary*



Tom Tobin
087 2758061
Cork City South



Kevin Dillon
086 2583513
West Cork



Luke Connelly
086 8561975
Galway



Michael Fogarty
086 2738182
Tipperary