

# Beef Sires for the Dairy Herd 2017

SHORT GESTATION -CALVING EASE- CALF/CARCASS VALUE

## SHORT GESTATION SIRES

Code	Name	Breed	Calv. Diff %	Rel %	Gest days	Carcass wgt (kgs)	Carcass conf	Replacement Index (across breed stars)	Comment
KYA	CORNAMUCKLA LORD HARDY K222	AA	0.7	99	-4.6	-1	0.45	★★★★★	Proven
AA2123	CHRISTON ELTON P623	AA	1.6	92	-4.1	9	0.55	★★★★★	Proven
HE2043	SOLPOLL 1 KENTUCKY KID PP HYF	HE	3.4	98	-1.1	-1	1.97	★★★★★	Proven, Homo-Polled
BB2083	RACHID DE REMICHAMPAGNE	BB	7.5	71	-1.0	14	0.16	★★	Full proof pending
RGZ	TUBRIDMORE GIZMO E.T. (ET)	AA	2.6	99	-1.0	8	0.36	★★★★★	Proven
AA2309	ST AODAIN L MASTER	AA	2.8	91	-0.7	3	0.58	★★★★★	Proven
BB2343	NEWPOLE HEARTTHROB	BB	9.7	76	-0.6	21	2.26	★	Full proof pending
KKO	DENDOR 1 KOHINOOR PP {HYF}	HE	4.9	99	-0.3	-5	0.42	★★★	Proven, Homo-Polled
HE2408	NETHERHALL 1 OZ DAFFY M040	HE	2.3	72	-0.3	4	0.39	★★★★★	Proof Pending, Homo-Polled

Progeny from these short gestation sires are born early i.e. shorter pregnancy and therefore longer lactation. Cows have more days in milk and are back in-calf quicker ensuring a compact calving pattern. The average gestation of beef bulls is +3 days.

## BEEF SIRES FOR DAIRY MAIDEN HEIFERS

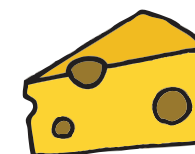
Code	Name	Breed	Calv. Diff %	Rel %	Gest days	Carcass wgt (kgs)	Carcass conf	Replacement Index (across breed stars)	Comment
KYA	CORNAMUCKLA LORD HARDY K222	AA	0.7	99	-4.6	-1	0.45	★★★★★	Proven
ZTP	TUBRIDMORE PRIDE K415	AA	0.8	99	-1.4	-16	0.57	★★★★★	Proven
AA2123	CHRISTON ELTON P623	AA	1.6	92	-4.1	9	0.55	★★★★★	Proven

Proven easiest calving sires available, guaranteeing you the maximum security possible at calving time.

## SHORTER GESTATION



Shorter Pregnancy



More Milk Solids



**munster**  
cattle breeding group



DBZ



BB2083



HE2043

## SIRES TO MAXIMISE CALF & CARCASS VALUE

Code	Name	Breed	Calv. Diff %	Rel %	Gest days	Carcass wgt (kgs)	Carcass conf	Replacement Index (across breed stars)	Comment
DBZ	MANITOU DE BELLE EAU	BB	8.3	99	0.1	23	0.7	★★★★★	Proven
BB2343	NEWPOLE HEARTTHROB	BB	9.7	76	-0.6	21	2.26	★	Full proof pending
BB2083	RACHID DE REMICHAMPAGNE	BB	7.5	71	-1.0	14	0.16	★★	Full proof pending
ZAG	CASTLEVIEW GAZELLE	LM	4.5	99	3.5	18	0.8	★★★★★	Proven
LM2117	TOMSCHOICE IMPERIAL	LM	6.1	93	0.5	21	0.18	★★★★★	Proven
SI2152	CURAHEEN EARP	SI	4.5	96	1.8	25	1.19	★★★★★	Proven
HE2407	BALLEEN GENERAL 862 ET	HE	3.6	63	0.8	12	1.3	★	Full proof pending, Horned
HE2043	SOLPOLL 1 KENTUCKY KID PP HYF	HE	3.4	98	-1.1	-1	1.97	★★★★★	Proven, Homo-Polled
OEO	IVOIRE PP	LM	5.0	95	3.5	10	1.93	★★	Proven, Homo-Polled
RGZ	TUBRIDMORE GIZMO E.T. (ET)	AA	2.6	99	-1.0	8	0.36	★★★★★	Proven
SPL	SOLPOLL 1 HANDSOME {HYC}	HE	3.2	99	0.4	3	0.62	★★★★★	Proven, Homo-Polled, HYC
AA2123	CHRISTON ELTON P623	AA	1.6	92	-4.1	9	0.55	★★★★★	Proven
AA2309	ST AODAIN L MASTER	AA	2.8	91	-0.7	3	0.58	★★★★★	Proven

Progeny from these sires are of high quality and have superior market value as calves. In addition, their superior terminal traits; carcass weight and conformation ensure that they meet market specifications yielding carcasses of higher value.



**Calf Value**



**Carcass Value**

## BEEF SIRES TO PRODUCE SUCKLER REPLACEMENTS FROM THE DAIRY HERD

Code	Name	Breed	Calv. Diff %	Rel %	Gest days	Carcass wgt (kgs)	Carcass conf	Replacement Index (across breed stars)	Comment
ZAG	CASTLEVIEW GAZELLE	LM	4.5	99	3.5	18	0.8	★★★★★	Proven
LM2117	TOMSCHOICE IMPERIAL	LM	6.1	93	0.5	21	0.18	★★★★★	Proven
LM4217	MOONDHARRIG KNELL	LM	3.4	50	2.4	22	2.1	★★★★★	Test
SI2152	CURAHEEN EARP	SI	4.5	96	1.8	25	1.19	★★★★★	Proven
RGZ	TUBRIDMORE GIZMO E.T. (ET)	AA	2.6	99	-1.0	8	0.36	★★★★★	Proven
PZB	BONAPARTE	SA	2.9	97	0.6	17	0.44	★★★★★	Proven
HE4291	ALLOWDALE ADVANCE 573 ET	HE	4.4	36	0.7	18	0.69	★★★★★	Test, Horned
SA2153	HIGHFIELD ODRAN	SA	3.3	88	1.1	26	2.7	★★★★★	Proven
HE2043	SOLPOLL 1 KENTUCKY KID PP HYF	HE	3.4	98	-1.1	-1	1.97	★★★★★	Proven, Homo-Polled
AA4088	INTELAGRI MAVERICK E.T.	AA	1.4	46	-1.7	14	0.7	★★★★★	Test
AA4089	INTELAGRI MATTEO E.T.	AA	1.9	46	-2.1	16	0.54	★★★★★	Test
SPL	SOLPOLL 1 HANDSOME {HYC}	HE	3.2	99	0.4	3	0.62	★★★★★	Proven, Homo-Polled
AA4086	MARIANHILL L PAPA 516	AA	1.2	50	-0.5	6	0.28	★★★★★	Test
AA2123	CHRISTON ELTON P623	AA	1.6	92	-4.1	9	0.55	★★★★★	Proven
KYA	CORNAMUCKLA LORD HARDY K222	AA	0.7	99	-4.6	-1	0.45	★★★★★	Proven

Use these High Replacement Index Sires to produce Suckler Replacement heifers suitable for the BDGP scheme from your dairy herd



ZAG



LM2117

## BEEF SIRES SUITABLE FOR JERSEY/JERSEY X COWS

Code	Name	Breed	Calv. Diff %	Rel %	Gest days	Carcass wgt (kgs)	Carcass conf	Replacement Index (across breed stars)	Comment
HE2408	NETHERHALL 1 OZ DAFFY M040	HE	2.3	72	-0.3	4	0.39	★★★★★	Proof Pending, Homo-Polled
SPL	SOLPOLL 1 HANDSOME {HYC}	HE	3.2	99	0.4	3	0.62	★★★★★	Proven, Homo-Polled
HE2043	SOLPOLL 1 KENTUCKY KID PP HYF	HE	3.4	98	-1.1	-1	1.97	★★★★★	Proven, Homo-Polled
HE4298	FABB 1 NUTCRACKER	HE	2.4	30	2.0	-5	1.51	★★★★★	Test, Homo-Polled
HE4297	FABB 1 NORTHERN STAR	HE	3.1	30	1.3	-3	0.43	★★★★	Test, Homo-Polled
HE4291	ALLOWDALE ADVANCE 573 ET	HE	4.4	36	0.7	18	0.69	★★★★★	Test, Horned
HE4292	ALLOWDALE RORY 594	HE	2.1	47	-0.1	14	0.78	★★★★	Test, Horned

Use these Sires to ensure your beef calves are colour marked and easily identifiable as beef cross calves. Maximise calf value. Avoid milking Angus crosses!



SPL



HE2043

## TEST SIRES

Code	Name	Breed	Calv. Diff %	Rel %	Gest days	Carcass wgt (kgs)	Carcass conf	Replacement Index (across breed stars)	Comment
AA4086	MARIANHILL L PAPA 516	AA	1.2	50	-0.5	6	0.28	★★★★★	
AA4087	GOULDING MAN O MAN	AA	2.8	48	3.4	18	2.33	★★★★★	Carrier of double muscled gene
AA4088	INELAGRI MAVERICK E.T.	AA	1.4	46	-1.7	14	0.7	★★★★★	
AA4089	INELAGRI MATTEO E.T.	AA	1.9	46	-2.1	16	0.54	★★★★★	
HE4291	ALLOWDALE ADVANCE 573 ET	HE	4.4	36	0.7	18	0.69	★★★★★	Horned
HE4292	ALLOWDALE RORY 594	HE	2.1	47	-0.1	14	0.78	★★★	Horned
HE4297	FABB 1 NORTHERN STAR	HE	3.1	30	1.3	-3	0.43	★★★	Homo-Polled
HE4298	FABB 1 NUTCRACKER	HE	2.4	30	2.0	-5	1.51	★★★★★	Homo-Polled
HE4266	HOLLYBUSH 1 NOBLE {HYF}	HE	2.1	15	0.6	€2	0.43	★★★★★	Homo-Polled
BB4286	IDEAL DE PETIT WARET	BB	n/a	n/a	n/a	n/a	n/a	n/a	
BB4300	PHENOMENE DE BOULOGNE	BB	n/a	n/a	n/a	n/a	n/a	n/a	
BB4015	SIRE DE LA COUE	BB	7.2	5	0.3	15	1.46	★	
LM4217	MOONDHARRIG KNELL	LM	3.4	50	2.4	22	2.1	★★★★★	

These are the next generation beef sires for the dairy herd, carefully selected with emphasis on calving ease, short gestation, colour, vigour at birth and calf & carcass value



AA4086



AA4087



AA4088



AA4089



HE4292



HE4297



HE4298



HE4266



BB4286



BB4300



BB4015



HE4291



LM4217